



**TECHNOLOGY IS OUR PASSION**

Specialists for demanding applications

# Technology expertise from Berlin



Management:  
Frank Weidenmüller, Frank Hermann, Jürgen Wegener

Highly specialised services for demanding applications: We have been realizing complex projects for demanding industrial customers for more than 40 years at our location in Berlin - true to this motto. Our origins go back to a management buy-out by a major German group, and we have been continuing this tradition at FST Industrie GmbH since 2008. Since then, we have made a global name for ourselves with an extraordinarily broad ranges of services and thy dynamism of a dedicated SME - as a specialist for innovative technical solutions for plant engineering, assemblies, components, standard products and services.

Our offering spans everything to do with technical products: From the initial consultation through to development, project planning, construction and manufacture, and also quality assurance, assembly, going live, training and logistics we offer you entire service packages from a single source. Our focus is always on client satisfaction. That is why we do not restrict our services to implementing our orders, but we also realise creative, customized special solutions with a high level of quality and dedication to delivery deadlines. Motivated and highly-qualified employees, extensive core competences, an integrated quality management system and effective investments in technical equipment are our key success factors along this path.

Our customers' trust means that the number of employees with our company has now more than doubled in few years. This constant growth - in particular in our international business - meant that we had to relocate to larger facilities in 2013. Since then, we have more than 30,000 square metres of production, warehouse and office space at our new facility in Spandau-Gartenfeld, including state-of-the-art crane systems and production equipment. In future too, together with our customers, we will continue to pursue healthy growth and uncompromising quality. We are looking forward to your challenges!

Your FST Industrie GmbH Management

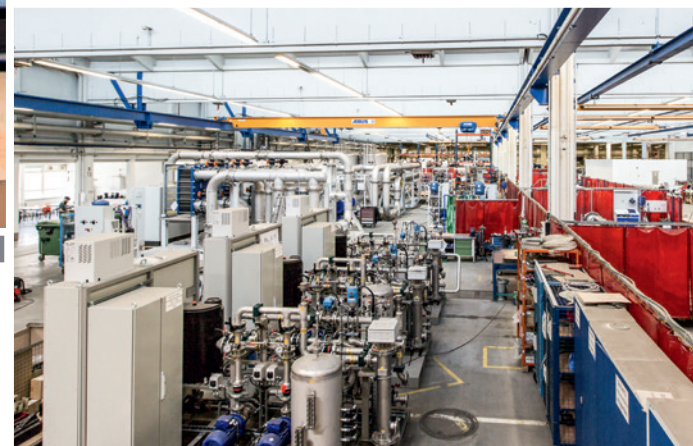
  
Frank Hermann

  
Jürgen Wegener

  
Frank Weidenmüller



Production hall at new location



## Our expertise - for your projects

### Plant engineering:

- Re-cooling plants
- Rectifier
- Absorption cooling plants
- Special process units

### Electromechanical devices:

- Manual oil meters
- Cylindrical piston meters
- Earthing switch
- Circuit breakers
- Mining switches

### Components and assemblies:

- High-voltage circuit breakers and devices
- Customized stainless-steel and aluminium pipelines
- High-current inductor (e.g. 40 kA)
- Rectifier (e.g. 105 kA, 1250 V DC)
- Crushing plates
- Protective casing for extreme conditions  
(For example, use at up to -60°C exterior temperatures)
- Welding constructions for a wide variety of Applications

### Services:

- Non-destructive testing
- After sales
- Logistics and packaging
- Advice/technical advice
- Advice on welding technology methods
- Advice on production-ready construction





Plant engineering

# Tailor-made technology



Customised to your requirements: FST produces, constructs and realises complex technical solutions for you - from individual plants through to standardised series. Our portfolio includes, for example, re-cooling plants and systems for medium voltage applications (SVC) and large-scale cooling plants (HVDC), absorption cooling device plants, rectifiers, casings for overload switches and special devices of all kinds. We can support you in every phase of plant engineering: You design a new product - our experts evaluate the concept together with you and provides you with valuable suggestions on how to optimise this. When we receive your order, we work out the construction, procure the requisite material, and



▪ Automatisierungstechnik ▪ Schaltschrankbau

Am Möllenberg 37, 15713 Königs Wusterhausen  
Fon 03375 9227 17, [www.gemtec.eu](http://www.gemtec.eu)

verbinden...





produce the items on schedule according to strict quality criteria. If requested, we can also provide you with end-to-end logistics, assembly, training for your employees, and we can take the equipment into operation using our professionals - and all from a single source. We believe that the foundations for a project's success can be found in our close cooperation with our customers. That is why we ensure that our experts are available for you during planning and implementation of the project and also as part of our other services, and can provide you with solution-oriented advice and up-to-the-minute professional knowledge at all times.

**MADE  
IN  
GERMANY**


**thermofin®**  
 heat exchangers - GERMANY

Look into the future  


## WE ACCOMPANY YOUR PASSION





### Ihr Partner für individuelle Lösungen in der Energietechnik



### Your partner for individual solutions in energy technology



[www.thermofin.de](http://www.thermofin.de) • [info@thermofin.de](mailto:info@thermofin.de)

thermofin GmbH • Am Windrad 1 • DE-08468 Heinsdorfergrund  
 Tel: +49 (0) 3765 / 3800-0 • Fax: +49 (0) 3765 / 3800-8038





We produce highly technically demanding, end-to-end industrial plants for our clients, for example rectifiers for energy generation and distribution which meet the strictest quality and testing requirements. We have many years of expert eyes in this area, and we combine technically demanding high-voltage components in various production stages:

- Auto CAD 3D-construction
- Mechanical processing and special coating
- Welding aluminium cooling profiles - with subsequent pressure and leak testing
- Electrical wiring and testing

You benefit from our cost-optimised end-to-end solution for your projects, and enjoy constant, high availability of your equipment, because we only use the highest production and quality standards.





Ihr direkter Weg  
zur Eta-Pumpenfamilie.  
Alle Pumpen auf  
einen Blick.



## Die Eta bewegt die Welt

Die Eta-Pumpenfamilie setzt weltweit Maßstäbe – seit Generationen. Das hat gute Gründe: die hervorragende Hydraulik mit ihrer hohen Effizienz. Viele Baugrößen, Werkstoffe und Antriebe mit fast unendlich vielen Varianten. Und Serviceleistungen, die in der Branche ihresgleichen suchen. Entdecken Sie jetzt die Möglichkeiten der neuesten Generation millionenfach bewährter Pumpen. [www.ksb.com/eta](http://www.ksb.com/eta)



Etanorm



Etachrom



Etabloc



Etanorm SYT

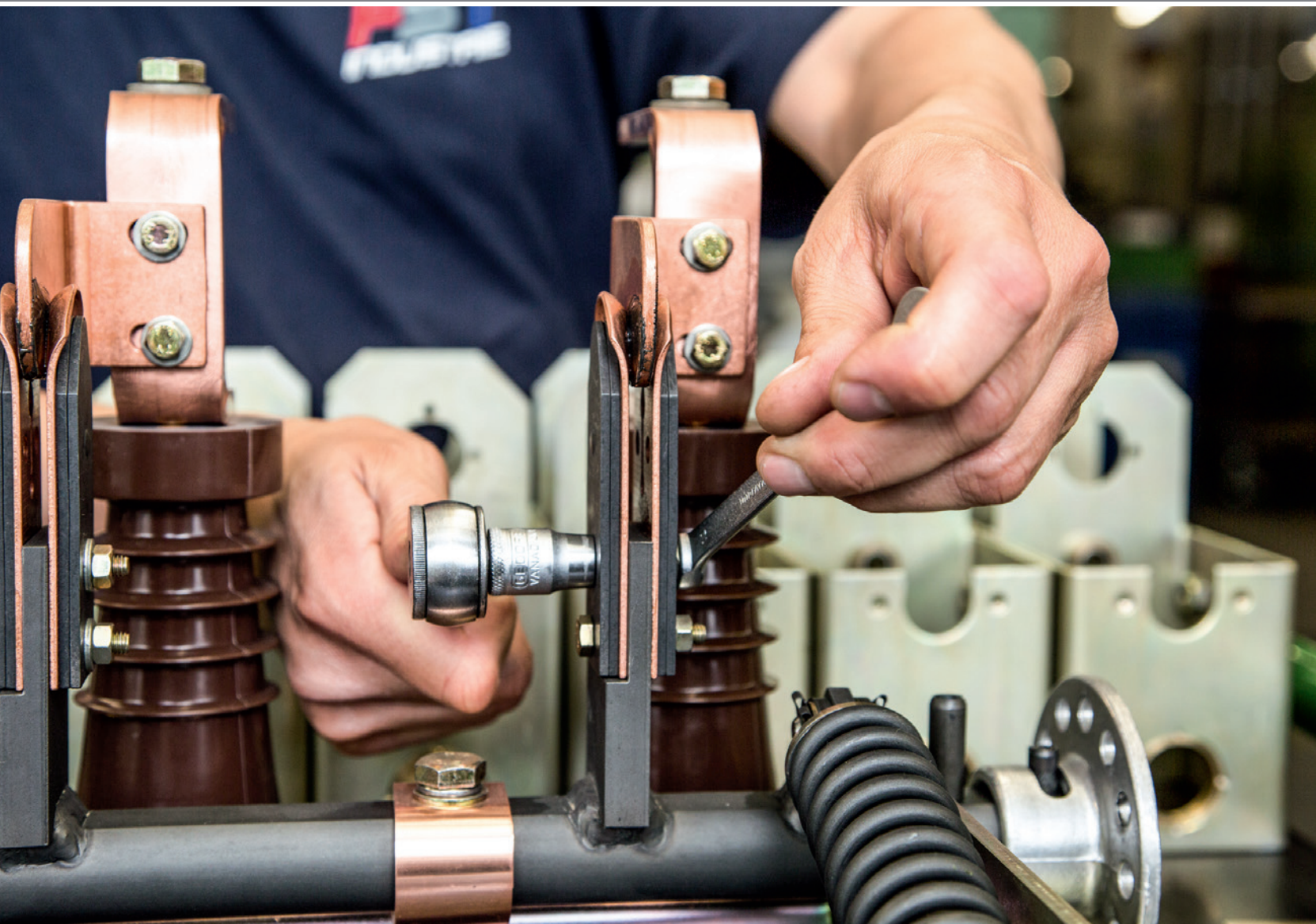
► Unsere Technik. Ihr Erfolg.

Pumpen • Armaturen • Service



Electromechanical devices

# From switches through to drive solutions



**Ihr Spezialist für Plattenwärmetauscher**

**Komponenten für kundenspezifische Lösungen**

[www.sondex.de](http://www.sondex.de)



Sondex Deutschland GmbH | Robert-Koch-Str. 3 | D-21423 Winsen (Luhe) | Tel. +49 (0) 4171-788330 | Fax. +49 (0) 4171-788340 | [info@sondex.de](mailto:info@sondex.de)



**SONDEX®**



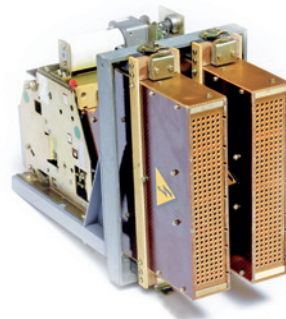


Many manufacturers know the problem: They have to keep electromechanical devices and components in their programme, although this makes little economic sense due to the very small quantities concerned. Or they have to ensure that replacement parts are available for older models, although this stopped being profitable a long time ago. Others have developed a new product concepts, however, they are unable to produce it themselves in this form. FST's end-to-end service is the solution: We produce electromechanical devices using

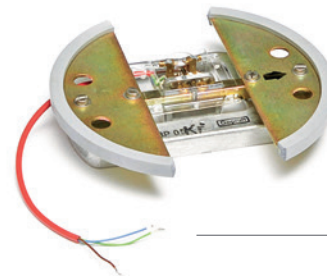
an intelligent standard method - and take over all of the related tasks for you, from technical documentation through to logistics for replacement parts. No matter whether this concerns switches (including for explosion-protected areas according to ATEX), switching systems, motorised drives, current limiters or measurement technology devices such as cylindrical piston volume meters: We take the pressure off you, across the board. And you can use your company's resources better again.



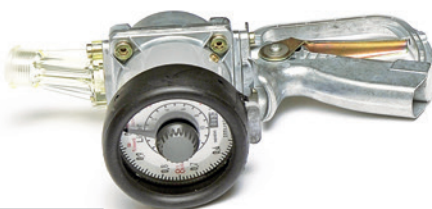
1



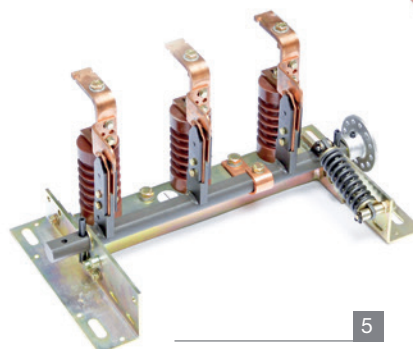
2



3



4



5

- 1 Cylindrical piston metre 7MR
- 2 High-speed DC circuit breaker 3WF
- 3 Magnetic relay
- 4 7MS manual oil metre, also certified metres
- 5 3CX earthing switch



Components and assemblies

# System assembly and high-voltage



Our customers have to be able to react to the requirements of the international market at all times. To do that, they use our wide range of technology expertise and our flexible production possibilities to realise global projects with the highest quality requirements. System assembly for gas-insulated high-voltage assemblies is just one example of our top-quality performance. Assembly follows precisely planned work stages, in line with an ISO-9001-certified quality management system. This means that we can always meet the highest requirements for product quality, reliability and service even if the deadlines are really tight. You can count on our extensive range of services: From the system-controlled procurement of materials or warehouse logistics and transportation for thousands of components - FST is your partner.



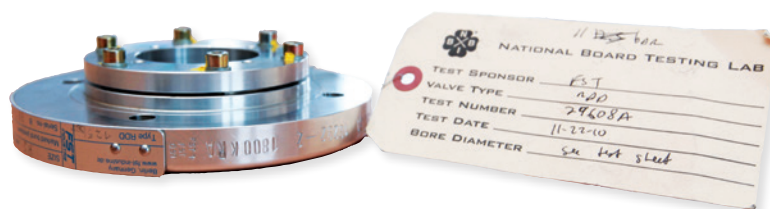


Components and assemblies

## High-voltage test bay



Secure testing under extreme conditions: Top-quality components for electrical power transmission technology demand a high performance testing portfolio after they have been produced and assembled. Our specialist competence and many years of testing experience mean that we can ensure top product quality for high-voltage assemblies for all types of power technology applications. Our wide-ranging test equipment ensures efficient workflows and short throughput times - even if there is great variance and different testing requirements.



Das ist Versicherung

### Was auch kommt. Zählen Sie auf uns!

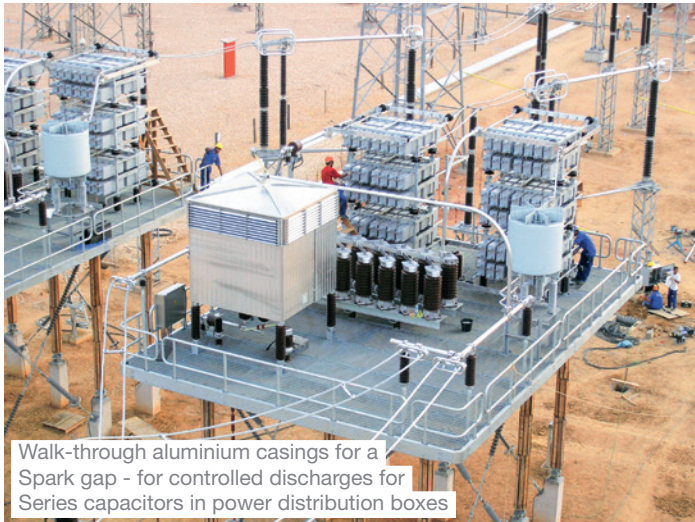
- Firmen-/Industrieversicherungen
- Betriebliche und private Altersvorsorge
- Kraftfahrtversicherungen
- Belegschafts-/Privatschutzversicherungen
- Private Krankenversicherung/DKV

HDI Generalagentur Martin Suckrow  
Filiale Berlin Kurfürstendamm  
Kurfürstendamm 93  
10709 Berlin  
Fon: 030 / 259 38 600  
Bildschirmfax 0511 / 645 11 53 115  
martin.suckrow@hdi.de  
[www.hdi.de/filiale-berlin-kurfuerstendamm](http://www.hdi.de/filiale-berlin-kurfuerstendamm)

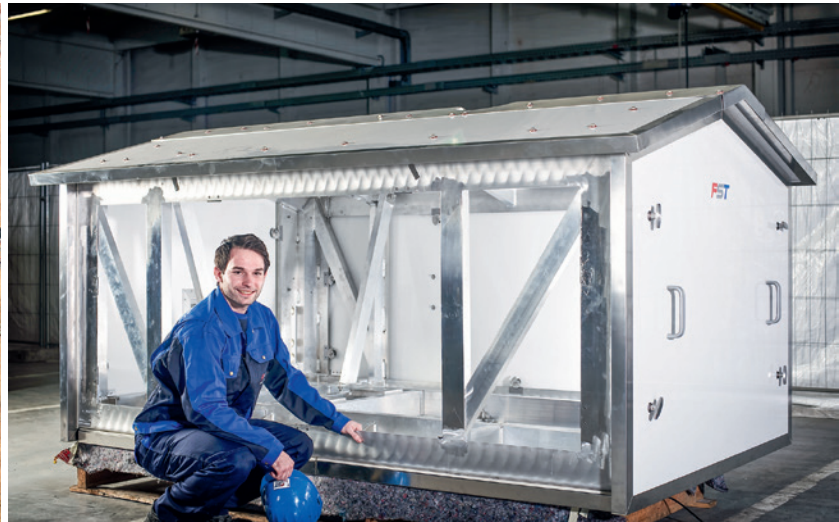


Components and assemblies

# As multifaceted as our customers



Walk-through aluminium casings for a Spark gap - for controlled discharges for Series capacitors in power distribution boxes



From specialty casings, stainless steel piping, or water-cooled aluminium high current inductors: You are looking for a technically demanding production solution for your product. We develop this together with you - while taking into account the specifications required - a convincing concept to produce your assemblies, components and equipment, as individual items or as a small series. We combine various production technologies to form a specialised and cost-

optimised end-to-end solution for you. In addition to providing advice on production-specific issues in the development and construction phase, and also in production itself, we act as a sub-contractor and are also responsible for the entire set-up, and supervising assembly on location. Our particular prowess is that we can implement customer-specific requirements in intelligent technical solutions, and that we can offer all of the associated services from a single source.





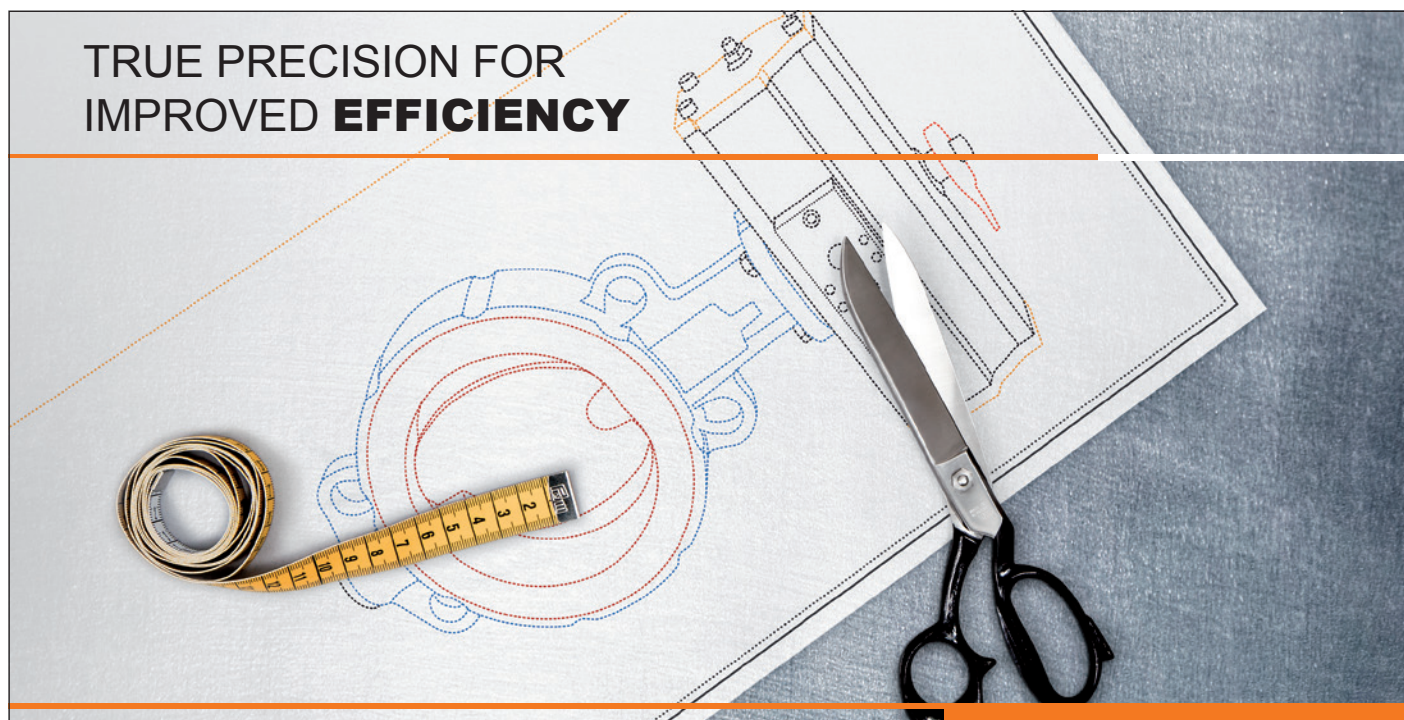
**Tested and certified** - FST's welding methods have been tested for all of the key materials groups and connectons.

- Non-alloyed and low-alloy steels and cast iron
- Cr-Ni steels
- Aluminium wrought alloys and cast aluminium
- Nickel molybdenum compounds (Hastelloy)

#### Product examples:

- High-voltage circuit breakers and devices
- Customized stainless-steel and aluminium pipelines
- High-current inductor (e.g. 40 kA)
- Rectifier (e.g. 105 kA, 1250 V DC)
- Crushing plates
- Protective casing for extreme conditions  
(For example, use at up to -60°C exterior temperatures)
- Welding constructions for a wide variety of Applications

## TRUE PRECISION FOR IMPROVED **EFFICIENCY**



Opt for us, and you'll always have the cutting edge. EBRO offers a wide selection of energy-efficient valves and actuators that are perfectly adjusted to one another. What is more, this functional unit can be customised to your requirements. Everything is perfectly matched – saving you not only energy but money as well! Visit our website for more details.

EBRO ARMATUREN Gebr. Bröer GmbH | Karlstraße 8 | D-58135 Hagen | Phone +49(0)2331-904 0 | Fax +49(0)2331-904 111  
post@ebro-armaturen.com | [www.ebro-armaturen.com](http://www.ebro-armaturen.com) | A Bröer Group Company | [www.broer-group.com](http://www.broer-group.com)





## Services

# Welding technology leaders



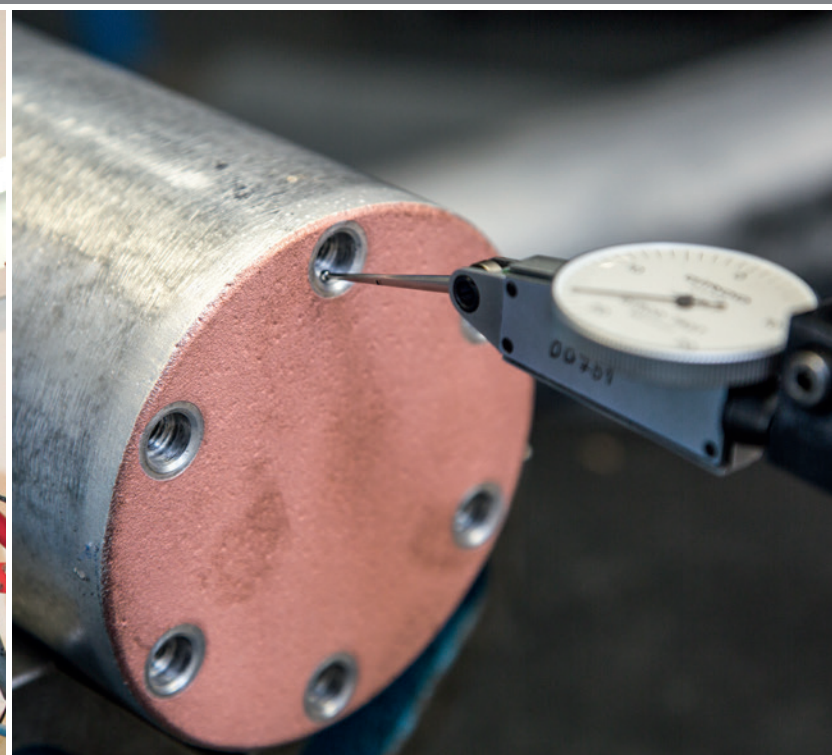
Perfectly connected: Welding technology plays a key role for many of our products. It is often the case that complex tasks have to be fulfilled in very short periods. For example, because the materials themselves mean that there are extremely high requirements on the quality of the connection. Or because the product concept demands special technologies and a great deal of manual skill. As a GSI SLV-certified welding company according to DIN EN ISO 3834-2 we master a wide range of welding technologies (DIN EN 1090, DIN EN 15085, DIN 2303, DGRL 97-23-EG), including highly demanding orbital welding.

This is fully mechanical-shielded welding in which the arc is mechanically orbited 360° around the piece in work without interruption. The connection between high-performance welding methods and the excellent skills of our highly qualified welders, ensures excellent quality, and also the ability to consistently reproduce our welded seams - even for the most complex components. Quality testing along the production chain is a fixed component of our quality management system, and secures and records this constant high level, including for our customers' benefit.



## Services

# Quality management meets testing competence



Our service programs include an extraordinarily varied programme of testing methods, tailored to our customers' requirements. We have acquired extensive testing competence in our many years of experience with industrial projects. After an in-depth analysis of the respective testing task, we offer you a technically and economically optimised solution.

Our testing is based on the relevant sets of rules, European and international standards, as well as specific customer requirements. We precisely log all of our test results, and to document these in acceptance test certificates 2.1, 2.2 and 3.1 according to EN 10204.

## Non-destructive testing by certified testing staff - according to DIN EN 9712

- Pressure and leak testing, leak detection (LT)
- Magnetic particle testing (MT)
- Penetration testing (PT)
- Radiation testing (RT)
- Visual testing (VT)
- Burst testing

## Function testing - an extensive testing bay for process technology devices

- Electrical and mechanical function testing
- Data recording (digital)
- Temperature recording
- Flow measurement
- Pressure-loss measurement



## Services

# Advice and construction



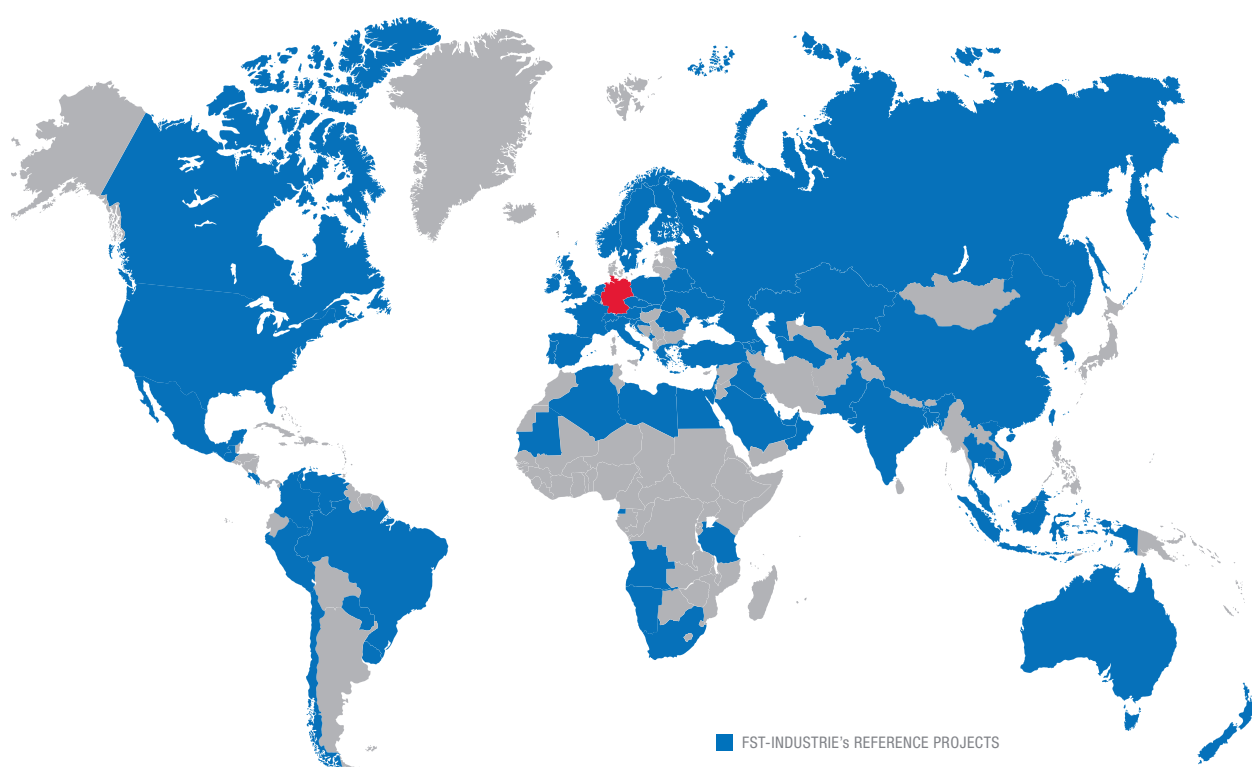
You have a task - we help you to find a solution. Use our well-founded knowledge to your advantage. Our active cooperation in the offer phase means that we can include our expertise at an early stage, to review technical feasibility and consider cost-efficiency issues. Our work is built on your concepts and specifications: We can only ensure that your needs and requirements are fully met in an in-depth dialogue with you. We are happy to reinforce your project management with our many years of experience, or also to take over the entire project management for you. Make certain that your concepts and constructions are profitable and effective - and discover optimisation potential that makes sense for you, together with us. Our end-to-end consulting services include, for example:

- Design
- Construction
- Production
- Welding technology
- Assembly
- Supervision, commissioning
- Testing
- Packaging
- Logistics
- After sales



## Services

# Full-service around the world



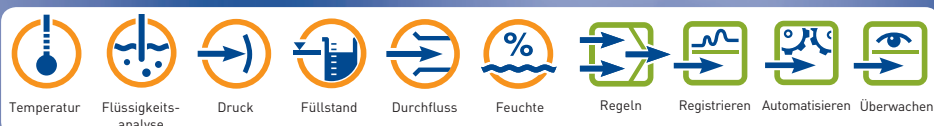
From highly qualified staff services, through to our global maintenance service: You can also enjoy FST's support after your plant has gone live, and benefit from our specialist technical knowledge and reliable concepts. Our technology experts offer you full specialist advice, and support you with everything needed for smooth operation in your company's day-to-day operations. In addition to general maintenance work to ensure the long-term use, reliability, availability and security of your

technology, this also includes further-reaching services such as extensive modernisations (refurbishment), upgrading and retrofitting existing equipment. In addition, we coordinate international logistics for replacement parts for you, can help you with our decades of experience in troubleshooting and finding unconventional solutions, and upon request we can also take care of technical initiations and training for your employees.

[www.jumo.net](http://www.jumo.net)



More than **sensors + automation**



**Mehr erwarten.**  
Innovative Spitzenleistungen  
für Ihren Erfolg.

**JUMO GmbH & Co. KG**, Moritz-Juchheim-Straße 1, 36039 Fulda, Telefon: +49 661 6003-0, Fax: +49 661 6003-500, E-Mail: [mail@jumo.net](mailto:mail@jumo.net)



## Logistics and alliances

# An international network - from Berlin into the world



At the required destination on time and defect-free: In order to ensure that our high quality standards are upheld for our deliveries, we bundle the majority of our transportation logistics in our own company. As the manufacturer, we know best how our components and devices should be securely packaged for transportation. If required, we can also employ complex special packaging for ocean-bound transportation. Our extensive warehouse and production facilities - with state-of-the-art crane equipment - means that we are able to move even expansive and heavy components safely ourselves, and to load these directly into the lorry with the correct specialist packaging. Together with our tried-and-trusted logistics partners, we ensure smooth coordination of the various transport solutions for deliveries to all parts of the world. Always individual. Always economical. And always coordinated precisely to your requirements.

## From the specification through to going live - End-to-end responsibility from a single source

A joint full of competence, a common contact person: When it comes to major projects in particular, our customers have come to know and love the fact that they don't have to spend a long time searching for reliable providers, and then also coordinating eats providers in parallel. We offered you clear responsibilities, take the pressure off you across the board, and coordinate your projects competently from a single

source. In this regard, if required we supplement our own portfolio with select partners in specialist areas that we do not cover ourselves - for example for specific tasks in casting, control or cooling technology. We form a well-practised team together with the specialists, which can support you with a great deal of flexibility and specialist competence in all areas. Just contact us with your project.

### Rhenus Warehousing Solutions



**Die Rhenus-Gruppe ist ein weltweit operierender Logistikdienstleister mit einem Jahresumsatz von 4,1 Mrd. EUR.**

Mit weit über 100 großen Logistikzentren und mehreren Millionen Quadratmetern Lagerflächen verfügt die Rhenus Warehousing Solutions über ein optimales Standortnetzwerk an bereits bestehenden, großen Multi-User Anlagen in Europa und Asien.

Diese Flächenabdeckung bietet vielfältige Möglichkeiten die Lagerstandorte innerhalb definierter Supply-Chain Anforderungen optimal zu nutzen. Beispiele hierfür sind Zentrallager, Regionallager, als auch Cross-Docking Plattformen in Single-, als auch in Netzwerkstrukturen. Für werkslogistische Aufgabenstellungen und produktionsnahe Projekte bietet die Rhenus Warehousing Solutions Ihnen außerdem Inhouse Lösungen an.

Rhenus SE & Co. KG • Berliner Straße 8 • 16727 Velten • Deutschland •  
Tel: +49 (0)3304 372-0 • [info@de.rhenus.com](mailto:info@de.rhenus.com) • [www.rhenus-warehousing-solutions.com](http://www.rhenus-warehousing-solutions.com)



# TOP Lage - Mitten in Berlin!



**Die Adresse für Logistik- und Produktion**

**Alles ist möglich! Auf Mietflächen von 1.000 m<sup>2</sup> bis 200.000 m<sup>2</sup>**

**Wir haben die passende Fläche! Für Ihre individuellen Ansprüche**

**Sofort verfügbar! Oder in Planung**

Ein Projekt der Illuminus Group 

## TRIGO Businesspark in Berlin-Spandau

**Jula GmbH** | Gartenfelder Straße 28 | 13599 Berlin-Spandau  
Ihr Ansprechpartner: Herr Schönwetter | **+49 (0)30 367 53 86-81** | [info@trigo28.de](mailto:info@trigo28.de)

TECHNOLOGY IS OUR PASSION

**FST**  
**INDUSTRIE**

**FST Industrie GmbH**

Gartenfelder Straße 28

Halle HW2

13599 Berlin

Germany

**Phone: +49 30 310 103-0**

Fax: +49 30 310 103-108

[info@fst-industrie.de](mailto:info@fst-industrie.de)

[http://fst-industrie.de/en\\_startseite-2.html](http://fst-industrie.de/en_startseite-2.html)

