

WIRTSCHAFT

BRAUCHTUM

NATUR





Welcome to the Hanseatic city of Attendorn in the beautiful Sauerland region. This is where extremely nice and cheerful people come from, blessed rolls, quite a few Christmas trees, and even heating systems for AIDA cruise ships. Here, a strong economy, lived customs and culture, as well as plenty of nature come together – that's why Attendorn is uniquely special three times over.

The climate here is described as mild, generally warm, and temperate – this also applies to the people, enriched by the small but significant word “heartfelt.” A historically and culturally rich city surrounded by 58 rural communities offers everything needed for a life that is enjoyable and fulfilling. Be our guest, get to know us. And who knows, you might even find yourself staying with us both personally and professionally. It would be our pleasure!





- 4 _____ History
- 6 _____ Economy
- 8 _____ Health
- 10 _____ Shopping & Gastronomy
- 12 _____ Customs & Events
- 14 _____ Leisure and Tourism
- 16 _____ Clubs
- 18 _____ Young and Old



Construction of
the first church

Granting of city
rights

Foundation of the
Marksmen's Asso-
ciation

Uprising of the
guilds against the
authorities

Largest of six
city fires

ca. 800

1072

1222

1455

1783

Over 800 Years

The Hanseatic city of Attendorn offers more than eight centuries full of history and stories. Due to its strategically advantageous location along two vital trade routes and its mild climate, which was important for agriculture, it is no coincidence that a settlement was established here.

From an initial village-like settlement with a primary parish, a fortified settlement with two castles and a city wall soon developed thanks to a donated monastery. Attendorn reached its first peak during the 13th and 14th centuries as a member of the Hanseatic League.

The wool and linen weavers played a significant role in this prosperity, as the cloth trade led to wealth and affluence. Merchants from Attendorn were known along the coasts of the North and Baltic Seas, and they even had their own permanent representative at the London Stalhof. Medieval coins from Attendorn can be traced from Brussels to Lubnice in Poland and as far as the island of Gotland. The connections with the Hanseatic city of Lübeck were particularly strong.

However, Attendorn also faced difficult times – the plague had to be endured multiple times, great fires ravaged the city and destroyed it on several occasions, and wars left their marks. Yet, this old lady has always managed to recover and has continually acquired (partly) new and youthful appearances through these events.



Opening of the Biggetalbahn (Biggetal Railway), promoting the city's development

Bombing raid on March 28 and ammunition explosion on June 15

Reservoir damming of the Biggetalsperre

Municipal reorganization with the merger of Attendorn city and the district

On June 1, the mayors of Attendorn and Rawicz (Poland) establish a town partnership

1874

1945

1965

1969

2019



Photovoltaik mit BIGGE ENERGIE

Die Energiezukunft auf dem eigenen Dach!

Sie überlegen, eine Photovoltaik-Anlage auf Ihrem Hausdach zu installieren? Gerne unterstützen wir Sie dabei und haben den Blick fürs Wesentliche: die optimale PV-Anlage für Ihren Strombedarf zu finden.

PV-Team kontaktieren
erneuerbareenergien@bigge-energie.de

Strom | Gas | Wasser | Wärme | E-Mobilität | Photovoltaik | Energielösungen

Gemeinsam kriegen wir das hin

Und treiben die Energiewende in der Region pragmatisch voran. Wir sind gerne für Sie da, wenn Sie Hilfe zu konkreten Themen benötigen oder sich zur Energiewende informieren möchten. Als Ihr regionaler Energieversorger von nebenan wertschätzen wir den persönlichen Kontakt zu Ihnen wie kaum etwas anderes.

BIGGE ENERGIE GmbH & Co. KG

In der Stesse 14
57439 Attendorn

bigge-energie.de

info@bigge-energie.de

T: 0 2761 896 - 22 22
 F: 0 2761 896 - 33 33

Unsere
Energie für
alle.



Karriere bei BIGGE ENERGIE

Bei uns dreht sich alles um Energie. Wir eröffnen dir eine Vielzahl an beruflichen Perspektiven und fördern dich – im Praktikum, deiner Ausbildung oder als Fachkraft. Du möchtest die Energiewende in der Region mit uns angehen und die Menschen rund um die Bigge zuverlässig mit Energie versorgen?

Dann bist du bei uns richtig.

Deine Karriere bei uns
arbeiten-bei@bigge-energie.de



Global Player

This is no secret: Attendorn is the industrial powerhouse of the Olpe district and thus the central hub of the fourth strongest industrial and commercial region in Germany.

Not only during the Hanseatic League was Attendorn an economically significant center, but even today, tradition and innovation go hand in hand. Now, everyone feels at home in Attendorn: from small family businesses to global players. That's precisely why we are thriving economically right here and now, ready to face the challenges of the future.



From Attendorn to the Whole World

In 1874, the Biggetalbahn brought a significant economic upturn to the city, which intensified over the decades and ultimately led to today's economic prosperity.

Over generations, so-called „hidden champions“ have emerged here—discreet and reserved market leaders whose products and employees cater to all classes, continents, and global markets. One of the highest per capita incomes in Germany speaks for itself.

Originally stemming from the metalworking industry, we offer much more than that: in the automotive sector, hardly a car in the world rolls out without a single component that hasn't had its beginnings in Attendorn. Even the large cruise ships are powered by technology from Attendorn.

DIE **ZUKUNFT** WARTET.
PACKEN WIR SIE
GEMEINSAM AN.

Karriere bei Viega

Viega zählt zu den wichtigsten **Technologieführern der Installationsbranche**. Mit innovativen Lösungen tragen wir große Verantwortung für unsere Umwelt und die künftigen Generationen - gerade bei den Themen **Trinkwasserhygiene, Energieeffizienz, Komfort und Sicherheit im Gebäude**.

Wir sind innovativ, divers und kreativ. Wir machen aus Räumen Lebensräume, indem wir die **Lebensadern der Gebäude von morgen installieren**.

Eine zugegeben große Aufgabe, die wir deshalb erfolgreich meistern, weil unsere **weltweit über 5.500 Mitarbeitenden** jeden Tag aufs Neue über sich hinauswachsen. Sie haben Lust, die Zukunft mit uns zu gestalten?

Dann werden Sie Teil unseres Teams!
[viega.de/Karriere](https://www.viega.de/Karriere)





Well-Established

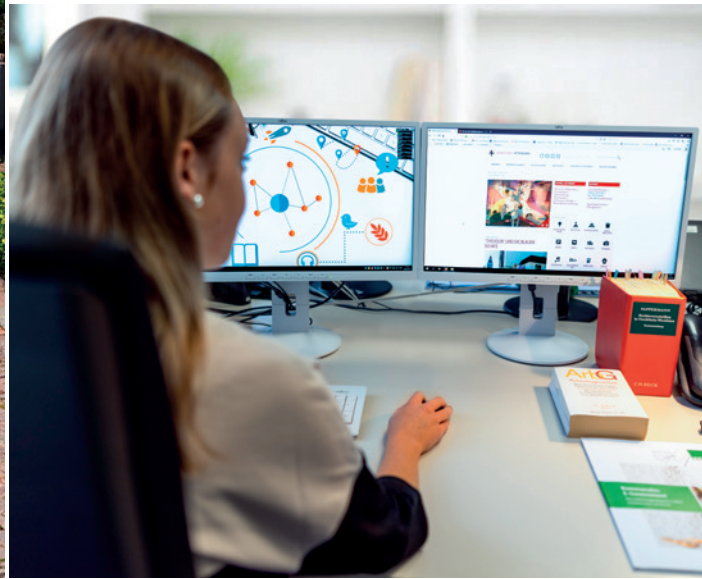
In our times, the city is economically shaped by industry, tourism with gastronomy and hospitality, as well as solid and skilled craftsmanship. A good healthcare system and a wide range of service providers strengthen the location's appeal.

That's why we are well-established. And that's why we continue to grow while maintaining our friendly character of togetherness. The global player is just as important to us as the blue-collar worker. We are proud of this and build upon it. Come to us, preferably for the long term, preferably forever. We have a lot to offer, and you certainly do too.

Well-Cared For

The sustainable assurance of medical care is a top priority in the Hanseatic city of Attendorn. With the establishment of the „Future Forum Health,“ a collaboration of various stakeholders, numerous measures have already been implemented to improve healthcare services in Attendorn and to attract potential new talents in the healthcare sector. These include the granting of medical scholarships, the establishment of a start-up grant for new doctors, the publication of a health guide, and support for a new medical center.

The hospital, a good selection of general practitioners and specialists, as well as numerous healthcare providers, are readily available for you on-site. Here, you are well cared for.



Mubea



LIGHT. EFFICIENT. GLOBAL.

Wir unterstützen unsere Kunden global mit innovativen und leistungsfähigen Leichtbauprodukten.

Dabei erkennen wir Möglichkeiten, bevor sie für andere sichtbar sind und tragen aktiv dazu bei, die Produkte der Auto- und Luftfahrtindustrie sowie der Mikromobilität nachhaltiger zu machen.

Wie auch die Fahrzeugtechnik in Zukunft aussehen wird, eines ist sicher:

Mit unseren innovativen Lösungen wollen wir sie entscheidend mitgestalten.

EINZIGARTIGE PRODUKTE UND TECHNOLOGIEN

www.mubea.com





Shopping & Dining

The town center, with its medieval layout and charming winding streets, captivates visitors and makes a trip to the Hanseatic city an exceptional experience. Strolling along the „Wälle“ around the historic city center, one can admire beautiful old buildings with intricately designed facades, as well as remnants of the old city fortifications, such as the Bieke and Pulverturm towers.

Amidst this picturesque backdrop, Attendorn's city center offers a wide range of shopping opportunities, featuring a high number of owner-operated shops. Stop by one of the many lovely restaurants in Attendorn, or take a leisurely walk through the popular weekly market, which invites visitors to „shop and chat“ every Saturday.





vb-sauerland.de

**Genossenschaftlich heißt,
gemeinsam Visionen für
die Region voranzutreiben.**

Morgen kann kommen.

Wir machen den Weg frei.

Wir sind die Bank mit der genossenschaftlichen Idee. Als Genossenschaftsbank übernehmen wir Verantwortung für die Region und die Menschen, die hier leben und arbeiten. Deshalb stärken wir die lokale Wirtschaft und fördern gemeinnützige Projekte und Initiativen, die sich vor Ort für den gesellschaftlichen Zusammenhalt starkmachen.





© Jana-Chiara Fotografie

Traditions & Events

From the Children's and Juggler's Festival to the Attendorn Cultural Summer: we regularly host newcomers as well as seasoned performers from all music genres and comedians who keep the atmosphere lively—there's always something happening here. From Culcha Candela and Beatrice Egli to Katrin Kebekus and Atze Schröder, they have all enjoyed performing here, and many have returned, with some even heating up the stage before their big breakthrough.

Carnival in Attendorn is traditionally as firmly rooted as our shooting festival. Kicking off the cultural calendar, Carnival is celebrated with great dedication every year, and the Veilchendienstag parade is one of the largest in Westphalia, truly a sight to behold. Over 30,000 people celebrate exuberantly with the residents of Attendorn, even paying homage to a dead cat. And then the streets resound with a triumphant threefold shout: „Katt-Filler!“





© Andrea Vollmert / Sauerlandkurier



© Olaf Knoth

The Festive Highlights at a Glance:

- Carnival of the „Kattfiller“
- Easter celebration with traditional bread blessing
- Spring market after Easter
- Marksmen’s festival on the first weekend in July
- Children’s and Juggler’s festival in summer
- Attendorn Cultural Summer
- Hanse Night at the end of the summer holidays with late-night shopping
- City festival on the second weekend of September
- Martini market on the first weekend of November
- Christmas market



Helios Klinik Attendorn

Immer an Ihrer Seite

Die Helios Klinik Attendorn blickt auf mehr als 700 Jahre Standort-Kontinuität zurück und präsentiert sich heute mit einem breiten Leistungsspektrum. 19 Fachabteilungen und vier medizinische Zentren, darunter das Endoprothetik-Zentrum, das Orthopädisch Traumatologische Zentrum, das interdisziplinäre Bauchzentrum, das Refluxzentrum, sowie eine geriatrische Tagesklinik gewährleisten eine weitreichende medizinische Versorgung. Zudem ist das frühere Krankenhaus St. Barbara als Lokales Traumazentrum zertifiziert und gehört dem Traumanetzwerk der Region Köln an.



 Helios



Leisure and Tourism

Travelers have always been warmly welcomed in Attendorn – true to Hanseatic tradition.

Come to Attendorn and enjoy the charm of the old town with its winding streets in our healthy mid-mountain climate of the Sauerland Rothaargebirge Nature Park, explore the natural experience area of Biggensee-Listersee, or visit the Atta Cave. Here, too, our motto applies: „three times unique.“

A vacation in Attendorn can be as diverse as the regional cuisine – the Atta Cave, discovered in 1907, offers deep insights into an underground wonderland and is one of the largest and most beautiful accessible stalactite caves in Germany, renowned far beyond the city limits.

You can catch stunning views while exploring the natural experience area of Biggensee-Listersee on foot, by bike, or from the water. The overall package is truly topped off by the panorama from the Skywalk, the 90-meter-high observation platform

„BiggeBlick,“ which offers fantastic panoramic views over the Biggensee. Thanks to its impressive illumination, it's also a real eye-catcher at night: LED lights shine from the lower ring of the platform, and the „needle“ on the platform is highlighted by white light. Whether hiking, skating, surfing, horseback riding, sailing, pedal boating, or rowing – there are countless ways to enjoy the fresh air and nature.

Over 400 kilometers of marked walking and hiking trails are available, including the „Sauerland Höhenflug“

and the „Heidenstraße,“ an ancient pilgrimage route. Quiet roads as well as challenging trails will excite all cycling enthusiasts. Numerous nearby destinations can be perfectly combined for a successful day trip.

Museum lovers will also find plenty to enjoy in Attendorn: the former town hall houses the Südsauerland Museum, featuring many exhibits related to the city's history, while our fire department museum showcases historical fire engines, firefighting equipment, uniforms, medals, and honors.



© Sauerland-Tourismus e.V. _sabrinity_REACT-EU





**TAXI RINKE -
UND DIE FAHRT
WIRD GUT.**

Willst du heim zu Deinen Lieben,
wähle schnell 2127

FLUGHAFENTRANSFER // GRUPPENREISEN
INKLUSIONSTAXI // PERSONENBEFÖRDERUNG // PILOTFahrTEN
KRANKENBEFÖRDERUNG // SCHULFAHRTEN

Taxi Rinke e.K. // Inh.: R. Weil // Donnerwenge 11 // 57439 Attendorn // ☎ 02722 / 2127 // ✉ zentrale@taxi-rinke.de

Taxi
SCHOLEMANN
02722 - - - - Inhaber: Marco Storti

2103 Ihnestr. 8 · 57439 Attendorn
www.taxi-scholemann.de
taxi_scholemann@t-online.de

Bestellung per App: TAXI.DE
Schnell anmelden und als bevorzugtes
Taxiunternehmen die **23409** eingeben für
Taxi Scholemann!



**Zwo eins null drei,
Taxi kommt vorbei!**



Clubs

Dear Attendorners, dear guests and visitors, it is easy to see: We enjoy being together, we enjoy being around each other, and we like to learn from one another. That's why we are particularly proud of the diversity of our clubs – whether sports or music, nature, culture, or social engagement: We come together with pleasure, we engage with enthusiasm, and we support one another.

Fishing clubs, badminton clubs, fanfare bands, women's choirs, and sailing clubs all connect us. From gardening and hiking clubs to carnival associations and men's dance troupes, from disability sports communities to rescue dog teams: here, everyone finds a home – as an Attendorn and within Attendorn clubs.

The list of our clubs is extensive. So extensive that we cannot possibly name them all. Please take a look here for an overview and to find your next club home among like-minded individuals:





Hotel / Restaurant
hinter historischen
Mauern



Schnellenberg 1
57439 Attendorf
T +49 2722 6940
www.burg-schnellenberg.de

Leidenschaft.
Verantwortung.
Qualität.

garcia-immobilien.de

garcia
IMMOBILIEN



For Young and Old

The educational offerings of the Hanseatic city of Attendorn start with our youngest children. It includes a total of 14 kindergartens and childcare facilities, as well as a therapeutic kindergarten and numerous children's playgroups.

Once the first steps have been learned and initial knowledge has been playfully imparted, full-day schools, local primary schools, a secondary school, a secondary modern school, and two high schools provide ample opportunities for further educational paths.

This educational offering is complemented by two special needs schools with different focuses, an evening high school, a branch of the vocational college in Olpe, and a music school that began its activities in 1975 and has since enriched the cultural life of the city.

A youth center is available for extracurricular youth work. With the InfoTastic Academy located in the city center, there is a fantastic program that brings people of all ages closer to technology and digital media under the motto „Living Innovation Together.“



We are particularly proud of what our youth is doing to bring movement to Attendorn:

The „Youth Center and Cultural Office Attendorn e.V.“ organizes the regionally renowned and extremely popular Children’s and Juggler’s Festival each year, featuring international artists. As the largest small arts and music festival in South Westphalia, it is a true highlight of the year.

For the people of Attendorn: The community center „Alter Bahnhof - Youth. Culture. Encounter“ was established with the support of federal and state funding and has provided a special venue for events and intergenerational encounters since 2024.

Indeed, in Attendorn, we meet on equal terms. Whether young or old, whether still in their childhood or with 80 years of life experience, whether dressed in work clothes or business attire, whether newcomers or long-time residents – here, everyone knows each other, and genuine encounters still take place.

The motto is cross-generational coexistence. For instance, our youth parliament is closely linked with the senior council.

Festivals are planned together, work is done collaboratively, and everyone helps each other wherever possible – young people explain the latest software updates on PCs or smartphones, while the older generation shares a wealth of expertise accumulated and solidified over decades.



DORNSEIFER
PERSONALMANAGEMENT

DIE PERSONALDIENSTMEISTER.

Sie suchen Fachkräfte? Wir haben Sie. Weil wir zusammenbringen, was zusammenpasst. Die besten Unternehmen mit den passenden Mitarbeitern. Professionell und persönlich.

dornseifer-personal.de

Es gibt einen Job, der zu dir passt und auf dich wartet. Und wir wissen, wo: dornseifer-crew.de



Gemeinsam die Heimat im Fokus.

Die Menschen der Region und die Sparkasse Attendorn-Lennestadt-Kirchhundem bilden eine starke Gemeinschaft. Zusammen gestalten wir auf vielfältige Weise unsere Heimat.

Weil's um mehr als Geld geht.

Sparkasse Attendorn Lennestadt Kirchhundem

WIRTSCHAFT

BRAUCHTUM

NATUR



© 2019 DEUTSCHLAND • Concept: JS MEDIA TOOLS GbR • 125896 • www.erlebeattendorn.de

Copyrights

Volker Schneider, DBMUD,
Jana-Chiara Fotografie,
Manuel Rueda, Artwork
Attendorn, Hansestadt Attendorn,
HGEsch, Oliver Köhnke,
HELIOS-Attendorn, Monokultur-Studio,
Olaf Knoth, Andrea Vollmert/Sauerlandkurier



Hansestadt Attendorn

Kölner Straße 12
57439 Attendorn

Tel.: +49 (0)2722-64 0

Fax: +49 (0)2722-64 421

E-mail: stadt@attendorn.de

www.attendorn.de

www.erlebe-attendorn.de