

More than Ceramics



# SAMSON CERA SYSTEM



SMART IN FLOW CONTROL

**Digitale Dokumente**

**Geschäftsprozesse**

**Mobiles Arbeiten**

**Datensicherheit**



**Digitalisierung leicht gemacht**  
Jetzt informieren und digitalisieren

# OUR MARKETS



Automotive



Consumer Goods



Mining



Chemicals and Petrochemicals



Industrial Applications



## Dear Customer,

as the Managing Director of CERA SYSTEM Verschleißschutz GmbH (CERA SYSTEM), I would like to welcome you and give you a brief introduction to our company. Since 1996, we've been a reliable partner for high-grade components for consumer products and the automotive industry. Our company originated in the renowned state combine "Keramische Werke Hermsdorf", which has a long tradition in the ceramics industry.

In 2000 we broadened our field of expertise and integrated the business Cerpraecis, a specialist in wear-resistant and corrosion-resistant valves, into our company. Today we proudly offer solutions for mining, refineries, and the chemical and petrochemical industries.

Our vision is to keep growing our company, to refine and enhance our complex components, and to continually improve our valves for global markets. To achieve this, we rely on innovation, quality, and sustainability in order to provide you with the best and most accurate custom-fit solutions.

Thank you for your confidence in CERA SYSTEM. We are looking forward to creating a successful future together with you.

Sincerely yours,  
 Thomas Gietl  
 Managing Director CERA SYSTEM Verschleißschutz GmbH

### 1890

"Porzellanfabrik Hermsdorf – Klosterlausnitz" (porcelain factory) founded.

### 1952

VEB (Publicly Owned Enterprise) "Keramische Werke Hermsdorf" founded.

### 1969

Formation of the "Keramische Werke Hermsdorf" combine for the entire range of technical ceramics.

### 1996

The CERAM Group acquires ceramic manufacturing from Tridelta AG, and CERA SYSTEM Verschleißschutz GmbH is founded from the Tridelta business unit "Verschleißschutz" (wear protection).

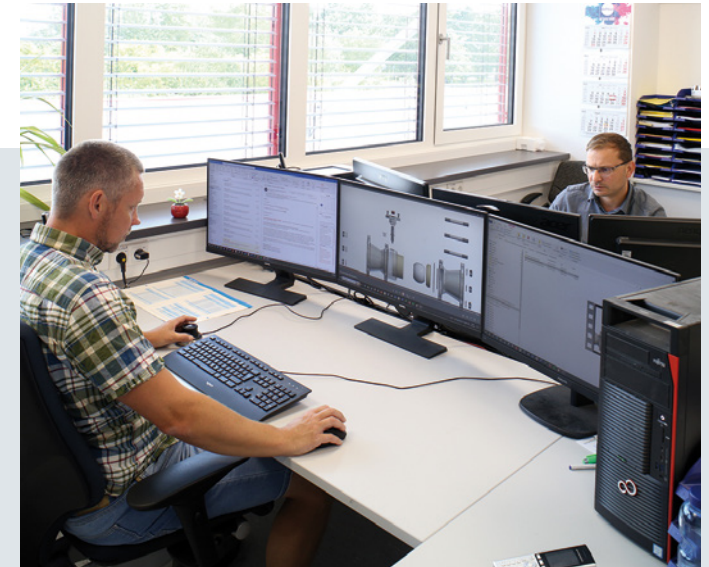
### 2000

CERA SYSTEM buys the company Cerpraecis

# OUR ALLIANCE – THE SAMSON AKTIENGESELLSCHAFT

## Mission statement and principles

- Orientation and direction – transparent goals and clear communication are the criteria for our daily business.
- Candid management culture – our managers act as role models, give clear guidelines, and promote performance as well as independent work behavior.
- Corporate actions – our innovative solutions require in-depth knowledge of complex relationships in order to utilize our resources efficiently and economically.
- Customer focus – with our attentiveness and reliability, and by realizing customized solutions, we do everything we can to establish long-lasting and trusting customer relationships.
- Confidence – with a feeling of solidarity and responsibility, we are collectively committed to the success of our corporation.
- Responsibility – we give our employees the tools and space to work and thrive independently. At the same time, we provide supporting measures to guarantee efficient teamwork.
- Initiative – our proactive approach allows us to shape our own future and actively contribute to SAMSON's growth and advancement as a corporation.
- Striving for quality – we set ambitious yet measurable quality goals, which we fully achieve with strong commitment.
- Pursuit of excellence – we pursue a holistic approach which combines technical excellence, customer value, efficient processes, and employee advancement.
- Identification – as a corporation we strive to be a technological leader and always a step ahead of the competition. Therefore, we invest in research and development to advance new technologies and innovative products.
- Adaptability – we consider change as a chance to strengthen our competitiveness and open up new business opportunities.
- Enthusiasm – the chance to evolve and be part of a lively community motivates us to go about our tasks with enthusiasm and dedication.



**2001**

CERA SYSTEM and other businesses from the former CERAM acquired by Riverside as the PPC Insulators Group

**2006**

CERA SYSTEM acquires LAV-Langer Armaturen (valves) GmbH

**2007**

SEVES Group Florence acquires PPC Insulators

**2012**

CERA SYSTEM acquired by SAMSON AG

**2016**

Brand identity standardized in SAMSON CERA SYSTEM

## CUSTOM-FIT VALVES

We focus especially on custom-made valves which are special products for our individual customers. Our internal processes are geared toward efficient production and the creation of high-class jobs. Production in this case encompasses both the manufacturing processes as well as assembly and product testing, including electrical qualifications.

Nothing in our portfolio is off the shelf – every product is a unique, custom-fit solution for the individual customer and is designed to meet the respective specific requirements. Proximity to our customers and competent advice are the core elements of our business.

## CERA VALVE

### Wear-resistant and corrosion-resistant valves

Our aim is to provide our customers with the best possible solutions to run their units reliably and efficiently. Our high-quality, high-performance ball valves enable processes to run smoothly and safely, even under the most demanding conditions.

### Wear-resistant and corrosion-resistant sliding-gate valves

Our sliding-gate valves offer a multitude of advantages which make them the preferred option for demanding applications. Their type of construction allows for extremely precise regulation of small amounts of solid-containing fluids and guarantees a design completely free of dead space. This ensures high reliability and minimizes the risk of deposits and obstructions in the valve.



## CERA PIPE

### Pipe wear protection

The ceramic used for our fittings is solid and has a wall thickness of approximately 6 mm. This makes our products extremely robust and durable, making them ideal for use in demanding environments. A particular advantage of our fittings is their nominal diameter conformity; they can be easily installed without making any changes to the existing pipework. The clear width corresponds to the flange connection, which enables seamless integration into the existing pipe system. Unlike traditional pipe elbows that are made up of straight sections strung together, our pipe elbows are actually made in a curved shape.

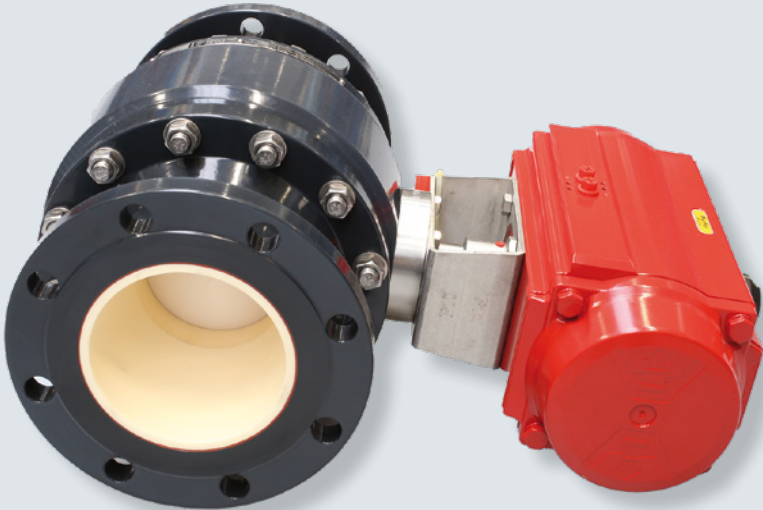
## CERA FLEX

### Ceramic hoses

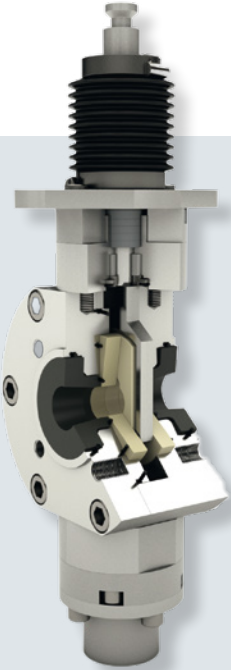
Our ceramic hoses are an ideal alternative for applications where conventional hoses would have to be replaced at regular intervals due to wear. They are made of special ceramic rings produced in-house that are vulcanized together with reinforced rubber materials. This unique combination makes the hoses exceptionally wear resistant and flexible, making them ideal for demanding environments where abrasive wear is a problem. A big advantage of our ceramic hoses is they can withstand pressures up to 10 bar.



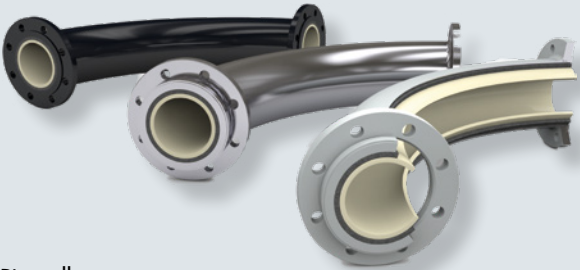
# PRODUCT EXAMPLES



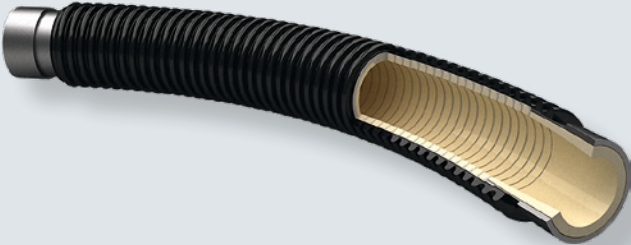
Fully automated, ceramic-lined ball valve in the fire-safe design



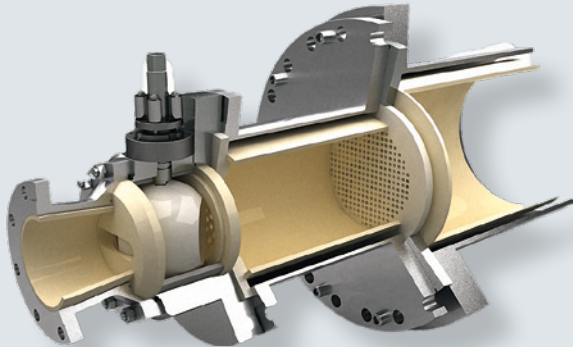
Ceramic-lined sliding-gate valve



Pipe elbows



Ceramic hose



Ceramic system solutions





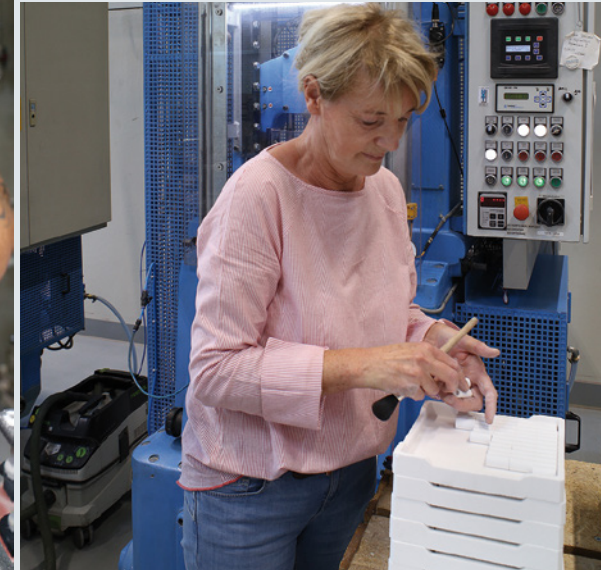
Production area for state-of-the-art machining and processing of valve components

# COMPLETE PRODUCTION PROCESS OF OUR CERAMIC COMPONENTS

Together with our customers, we develop individual, customized solutions and produce dry-pressed ceramics made of  $\text{Al}_2\text{O}_3$  in our own production facility. Our product manufacturing is a continuous process that starts with the powder and ends with the finished component.



The granulate for pressing is evenly sprayed and professionally prepared.



The pressed parts (green compacts) are prepared for the firing process (sintering).



The pressed parts are fired in the oven.

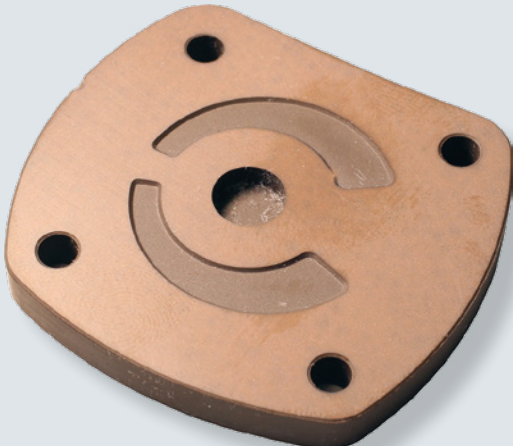


The sintered parts are then ground and polished.



Quality controls are carried out between the individual steps and at the end of the process.

# PRODUCT EXAMPLES



Component made of  $\text{Al}_2\text{O}_3$  for a fluidic machine



$\text{Al}_2\text{O}_3$  components made from brown and white bulk



Faucet disks



Ceramic components for mills

## We would like to thank all loyal partners!

Our success story would not have been possible without many years of collaboration with our reliable partners. We would like to take this opportunity to express our thanks to all of our partners – we look forward to continued successful partnership in the future!

Ihr Zulieferer für  
**Armaturenbauteile  
& Wasserstofftechnik**  
mit über 40 Jahren Erfahrung



- ISO Zertifiziert
- Umstempelberechtigt
- Abnahmemöglichkeiten (TÜV / DNV etc.)
- Bearbeitung von Sonderwerkstoffen

### Fertigung präziser Dreh- & Frästeile

- maschinelle Bearbeitung von  
Ø20mm bis Ø1200mm
- Kugelrundscheifen und polieren
- 5-Achsbearbeitung
- Automation im Dreh- & Fräsbereich
- Einzelteile und Kleinserien
- CAD/CAM-Programmierung
- CNC-Messmaschine



Arnskötter GmbH Präzisionstechnik  
Mergenthalerstr. 24 · 48268 Greven  
info@arnskoetter.de · www.arnskoetter.de



Verkehrsunternehmen  
**ANDREAS SCHRÖDER**  
Ihr Partner am Hermsdorfer Kreuz

Hermsdorfer Höhe 7 · 07629 Hermsdorf  
Tel. 036601 / 9227 – 0  
Fax 036601 / 9227 – 22  
E-Mail: [leitung@vus Schroeder.de](mailto:leitung@vus Schroeder.de)  
[www.verkehrsunternehmen-schroeder.de](http://www.verkehrsunternehmen-schroeder.de)

# EFFGEN

Schleiftechnik

# LAPPORT

## IHR PARTNER FÜR SCHLEIF-, POLIER- UND ABRICHTWERKZEUGE



Am Teich 3-5 · 55756 Herrstein · T +49 6785 18-0  
info@effgen.de · [www.effgen.com](http://www.effgen.com)

FACT gehört zu den führenden interdisziplinären Beratungsgesellschaften in den Bereichen **Steuerberatung, Wirtschaftsprüfung und Rechtsberatung** in Nordhessen.

Das Team, bestehend aus mehr als 80 Mitarbeiter:innen, berät nationale sowie global aufgestellte Unternehmen aller Branchen und Größen, auch in Spezialbereichen wie:

- Mergers & Acquisitions
- Implementierung und Prüfung von Compliance-Strukturen
- Implementierung und Prüfung Nachhaltigkeitsberichterstattung
- Verrechnungspreisgestaltung
- Internationales Steuerrecht
- Unternehmensbewertungen

& Vielem mehr.

Hier  
SCANNEN  
für mehr Infos:



**STEUERBERATUNG,  
WIRTSCHAFTSPRÜFUNG & RECHTSBERATUNG**

Johanna-Waescher-Strasse 13, 34131 Kassel  
TEL +49 561 316686-0 MAIL: info@fact-ks.de  
FAX +49 561 31668666 WEB: www.fact-ks.de



**Hochleistungskeramik  
für industrielle  
Anwendungen**

*Spannend, was  
Keramik kann!*

10.000 Keramiklösungen fürs Leben, die Gesundheit und die Industrie.  
[www.ceramtec-industrial.com](http://www.ceramtec-industrial.com)

## UNSERE LEISTUNGEN



- Unterhaltsreinigung
- Grundreinigung
- Glasreinigung
- Bauendreinigung

Geraer Str. 74A  
07646 Stadtroda  
[www.varis.de](http://www.varis.de)  
[mail@varis.de](mailto:mail@varis.de)



Phone: +49(0)4795 93160  
Mail: [info@kvt-group.de](mailto:info@kvt-group.de)  
[www.kvt-group.de](http://www.kvt-group.de)

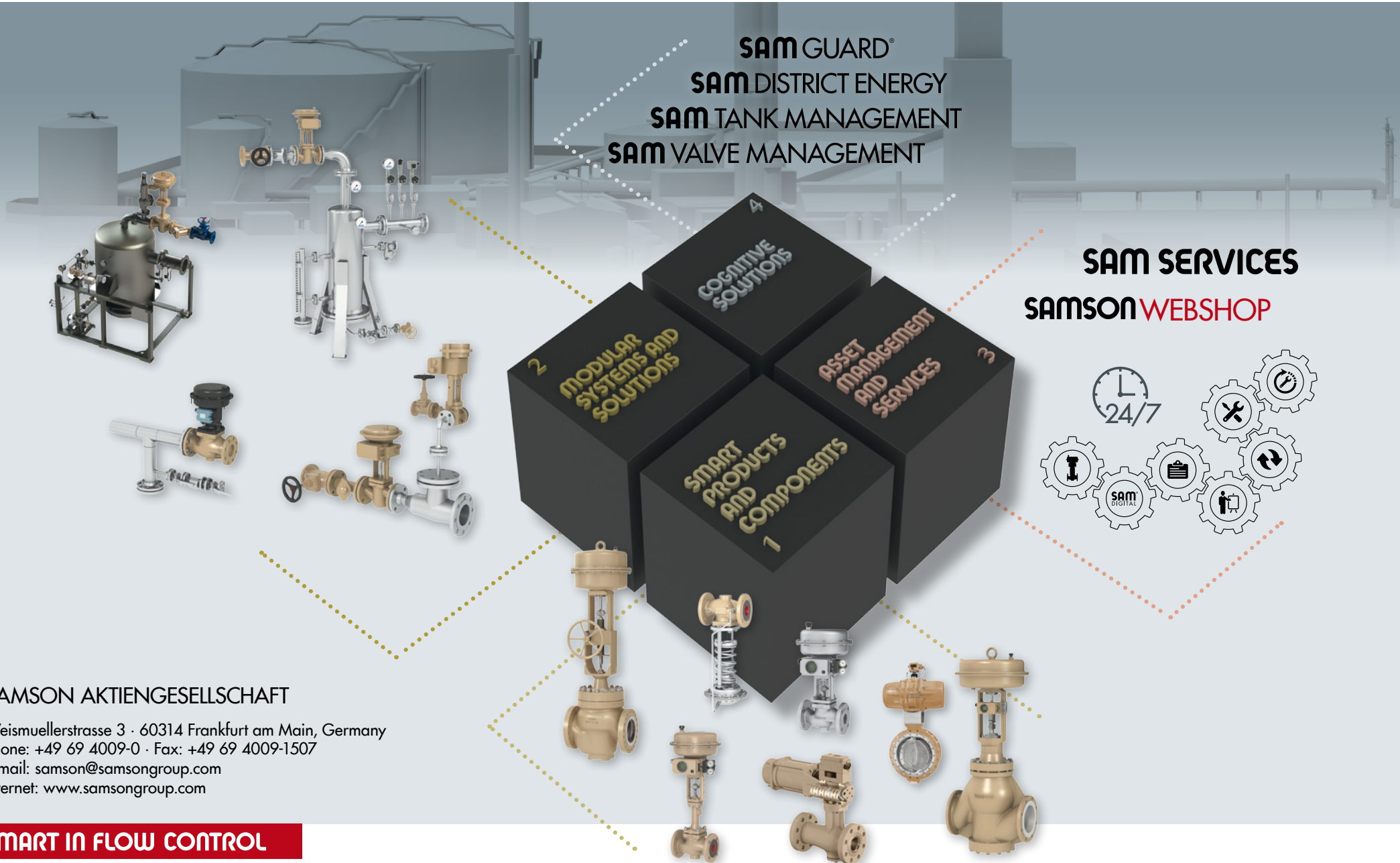
## Verschleiß- und Korrosionsschutz für höchste Anforderungen

Wir produzieren einbaufertige Produktlösungen mit extrem Verschleißfesten Schichtsystemen. Als inhabergeführtes Unternehmen stehen wir für „Made in Germany“.



# HIGHLIGHTS OF OUR INDUSTRY SOLUTIONS

Four Quadrants Strategy: Solutions and Technology



## SAMSON AKTIENGESELLSCHAFT

Weismuellerstrasse 3 · 60314 Frankfurt am Main, Germany

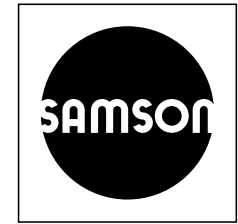
Phone: +49 69 4009-0 · Fax: +49 69 4009-1507

E-mail: [samson@samsongroup.com](mailto:samson@samsongroup.com)

Internet: [www.samsongroup.com](http://www.samsongroup.com)

**SMART IN FLOW CONTROL**

CERA SYSTEM Verschleißschutz GmbH  
 Am Globus 2  
 07629 Hermsdorf  
 Tel.: +49 36601 919-0  
 Fax: +49 36601 919-90  
 E-Mail: info-cera-de@samsongroup.com  
 www.cerasystem.de





**WAPPLER**  
 WERKZEUGMASCHINEN & AUTOMATION

Köhlerstraße 18  
 01640 Coswig  
 Tel. 035243 / 330 0  
[www.wappler-werkzeugmaschinen.de](http://www.wappler-werkzeugmaschinen.de)



Exklusiver Vertriebspartner 



**GUMMI HELD** GmbH

Marco Ebelt | ☎ 0341 49299590  
 Aurelienstraße 11 | 04177 Leipzig



[www.gummi-held.com](http://www.gummi-held.com)



**PRODUKTION**  
 Wir fertigen Formartikel und Gummi-Metalteile nach Ihren Wünschen.



**HANDEL**  
 Wir liefern alle gängigen Plattenmaterialien, Zuschnitte, Puffer und Dämpfungselemente.



**ENTWICKLUNG**  
 Wir planen und entwickeln Ihre neuen Produkte vom Muster bis zur Serie.

**SMART IN FLOW CONTROL**