



JL Goslar
A n o d e n



**JUST LEADING
ANODES**



Uncompromising HIGH QUALITY

JL Goslar GmbH has been manufacturing anodes for the extraction of zinc, copper, nickel, cobalt, manganese and cadmium since the 1960s - with our successful development, production and sales divisions. Our ongoing increase in success culminated in our foundation of a subsidiary in 2014: JL Goslar Anoden GmbH in Ilsenburg. This meant our decades of expert knowledge in metallurgy merged in the production of anodes for galvano technique. Our anodes are produced exclusively using the rolling process – for our satisfied customers all over the world. Plus, their impressive features include longer service life, great efficiency and lower power consumption. The anodes can be produced in any desired alloy and any desired dimension – precisely and customised based on our customers' requirements.

We pay constant attention to safety, quality, economy, innovation and the environment. This is why our highly qualified staff feel so passionately about the issue of recycling. Technological tests and our constant exchange of information with scientific institutions as well as with our customers complement our expertise and form the solid basis for the advice we give you personally. Why not call us today.

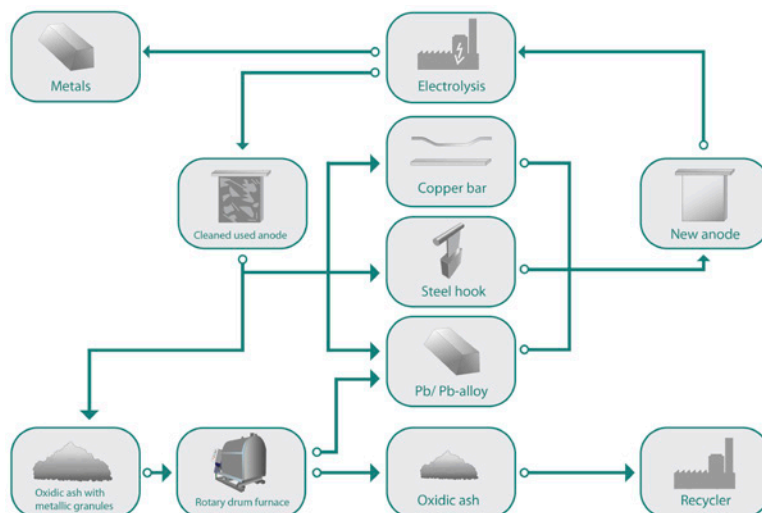
Your team at JL Goslar Anoden



Lead recycling and anode recycling

The WIN-WIN Situation

Taking back old products is becoming increasingly important. We take responsibility for this too and make a valuable contribution to sustainability with our "green lead". When placing a new order, you can find out about the terms for taking back and the processing of old products. One component to enhance your value chain in the process is our full service recycling programme for used anodes. We process these ourselves and feed them into the recycling loop. This results in new high-quality lead anodes, which ensure ideal results in your electrolysis. The win-win situation that saves you money. Ask us about this today.



Advice

YOUR PARTNER Every step of the way

The requirements for metal extraction rates and the demands on perfect equipment in electrolysis are increasing relentlessly. This is why we see ourselves not as an extended workbench for our customers but rely on our skills in providing advice with our years of experience - from the initial contact to delivery. We can inform you about possible production methods, we show you the advantages and disadvantages of individual technologies, we point out the risks and talk candidly about the costs. This means you get exactly the anode you need for your individual requirements. Of course, we also advise you individually about the alloy and select the alloy together with you that will give you the best result in metal extraction.



Anode sheets

Our rolling processes – YOUR BENEFIT

All anode sheets made of lead and lead alloys are manufactured using the rolling processes developed at JL Goslar. Compared to conventionally cast anodes, there are advantages here that make the electrolysis process more efficient and economical:

- Higher density
- Lower porosity
- Defined grain structure
- Less tendency to creep
- Greater conductivity
- Higher resistance to passivation
- Lower oxygen over-potential

As such, a rolled anode has the ideal corrosion resistance, deformation stability and energy efficiency. For our customers this means an anode with long service life, higher productivity and lower operating costs. We carry out all the production steps with the greatest precision, absolute attention to quality and superior technical expertise.

At our customers' request, we also treat the anode sheet surfaces with various blasting processes. With this type of surface finishing, we quickly achieve the formation of the required PbO_2 and MnO_2 layers. The benefit: The anode reaches its full performance within a very short time. This means the electrolysis operator can operate his system at the highest production level. We also produce all the sheet dimensions the customer requires.

Our product portfolio is supplemented by sheet cut-outs to increase the current density and to attach spacers / isolators.

Anode sheets untreated

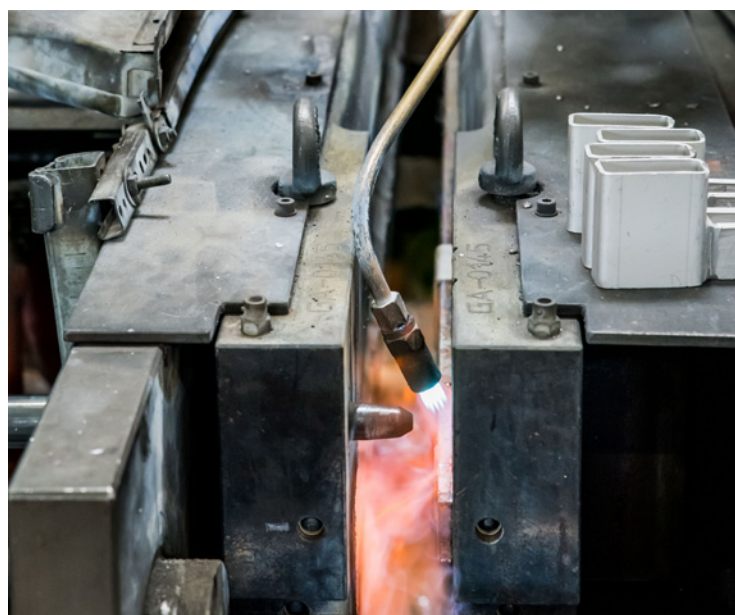
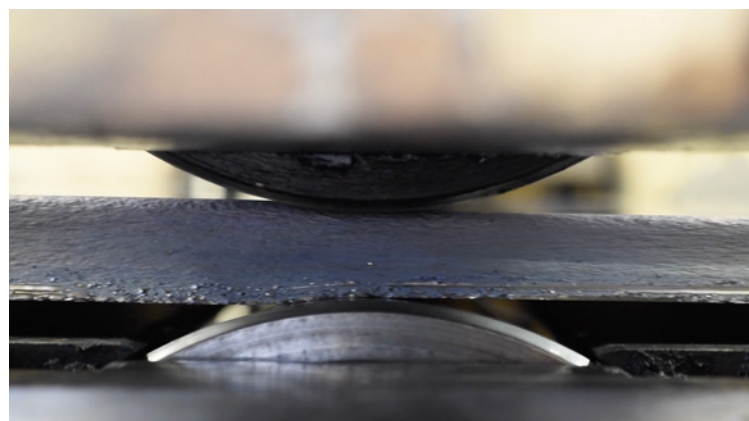
Anode sheets treated



Anode heads

Specifically produced to CUSTOMER REQUESTS

The anode support bars, like the sheets, are also produced in accordance with specific customer requests. After the copper bars have been cleaned, they are then tin-coated and lead-cast several millimetres thick. Our production method guarantees the best possible metallic bonding between the copper bar and the lead sheet. This means we can achieve corrosion protection against aggressive acid mist and efficient current flow for many years. The anode sheet's connection to the leaded copper support bar is achieved using a double-sided lead fillet weld or by welding the anode sheet to a cast material flag as a butt joint.



PRODUCT BENEFITS at a glance

Our rolled lead anodes provide the following benefits:

- Tailored production of lead alloys
- High density
- Defined grain structure
- Great resistance to deformation
- High corrosion resistance
- Rapid formation of PbO_2 and MnO_2 coatings
- Lower power consumption
- Long service life
- Less stress on electrolysis baths





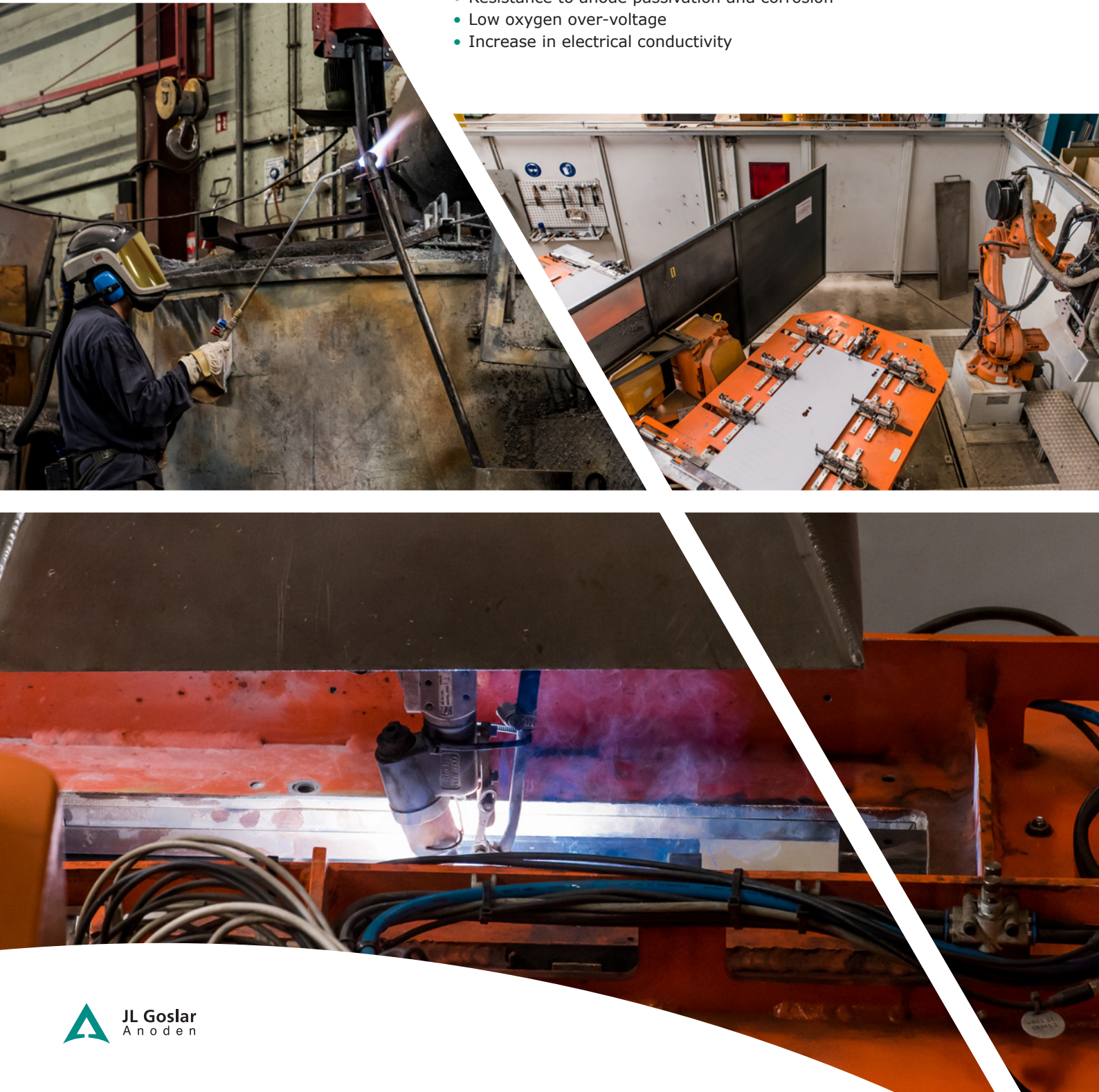
Alloys

Just right for **YOUR PROJECT**

In order for you to achieve the best possible result when it comes to metal extraction, anodes with the appropriate alloys are especially important during any downtimes, in order to avoid surface passivation. JL Goslar Anoden provides numerous alloy options, such as PbAg, PbSnCaAl or PbSb. Our service includes tailoring the composition of alloys for the anodes to your individual project.

The benefits of a perfectly coordinated alloy are:

- Resistance to anode passivation and corrosion
- Low oxygen over-voltage
- Increase in electrical conductivity



BERATUNG VERKAUF SERVICE DIENSTLEISTUNG



OBERFLÄCHENTECHNIK MASCHINENBAU STAHLBAU



Entlacken



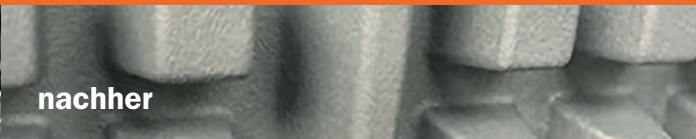
Entrosten



Finishen



vorher



nachher



Anlagen



Filter-/Entstaubungsanlagen



Strahlmittelaufbereitung



Ersatz-/Verschleißteile



Düsen



Persönliche Schutzausrüstung

Wir führen alle gängigen Strahlmittelsorten, wie z. B.: Glasperlen, Korund, Edelmetall, Kunststoff, Hartguss, Stahlguss.

Kerstgens Industrietechnik GmbH

Lüderitz Str. 3
D-45473 Mülheim a. d. Ruhr

www.kerstgens-industrietechnik.de

Sie haben noch Fragen?

☎ +49 (0) 208 - 30 28 33 56

✉ info@kint.ruhr





JL Goslar
Anoden

JL Goslar Anoden GmbH

Hüttenstrasse 1A
Germany-38871 Ilsenburg

☎ +49 (0)39452 - 8059 0

☎ +49 (0)39452 - 8059 19

✉ info@jlgoslar-anoden.de

🌐 www.jlgoslar-anoden.de

If you are interested in anodes for metal treatment,
please contact JL Goslar at info@jlgoslar.de



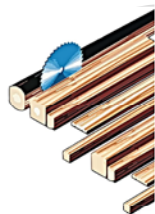
VON DER IDEE BIS ZUR FERTIGEN ANLAGE
Ihr kompetenter Ansprechpartner im Bereich

Engineering

Automatisierung — SPS — PC-Programmierung

Industrieroboter — kollaborierende Roboter (Cobots)

www.klm-avs-asr.de



ARND SCHULTE GMBH

Holzhandlung | Holzkonfektionierung

Lingensiepen 1 ☎ + 49 (0) 2353 / 90 20 31

58553 Halver

✉ info@holzhandlung-schulte.de

www.holzhandlung-schulte.de



Qualität
in der Holzverarbeitung
seit 60 Jahren