

ROHDE

SCHMUCKWAREN





TRADITION MEETS INNOVATION: SINCE 1946

Welcome to Rohde Schmuckwaren GmbH. On the following pages we would like to give you an insight into our history, our working methods and our products. Please enjoy reading the brochure.

Rohde Schmuckwaren GmbH, based in Wimsheim – Germany, has been manufacturing semi-finished products from all common precious metals, non-genuine alloys and combinations with trendy materials for the jewelry processing industry and the wholesale sector for over 75 years. Our extensive range includes bayonet clasps, ear hooks, ear studs with cups/plate/balls and silicone parts for jewelry, ear clips, ear screws, balls, ear hooks, bails, pendants with cups, capsules, spring rings, interchangeable mechanisms, ID tags, magnetic clasps, ear-nuts, end caps, Alpha19 studs, pins and chain stoppers. Necklaces and bracelets are available by the meter as well as finished goods.

Here we include in our range: braided leather, stitched leather, vegan leather, PVC, fabric and cotton straps, stingray leather, ostrich leather, artificial leather, steel cables, gold cables and silver cables, puzzle chains, raspberry chains, spiral chains and Milanese braids.

Since our founding in 1946, we have been constantly developing and we pass on an extensive knowledge from generation to generation in our family business. Our focus on innovation is always based on customer's requirements and the demands of tomorrow.

Therefore we develop and produce jewelry and all accessories for our customers around the world according to their own design (OEM – Original Equipment Manufacturer). Thanks to our short information channels and our uninterrupted accessibility, we guarantee the rapid implementation of all your jewelry ideas. Together with the subsidiary LG Findings GmbH, we now employ around 40 people

Our extensive portfolio and many years of experience in jewelry production and jewelry wholesale, makes us as one of the leading manufacturers in Germany. Please see our long-term performance for yourself.

Annette Wiedermann and Uwe Rohde,
The Management

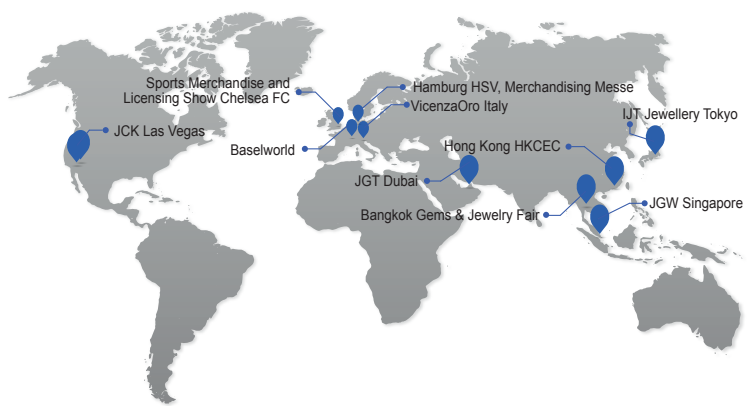
“Every jewelry idea is worth to be reconsidered in terms of feasibility, series production and marketing. We are always open to new paths and ideas.”



LG
Leach&Garner
VERTRIEBSPARTNER GMBH

OUR SUBSIDIARY: LG FINDINGS GMBH

LG Findings GmbH has been one of the leading manufacturers of semi-finished jewelry for over 30 years. In cooperation with production facilities in Germany, Europe and the USA, LG Findings has successfully developed sales. Annette Wiedermann and Uwe Rohde have been managing the company with their reliable and long-standing employees since 2006.



FROM WIMSHEIM THROUGH HAMBURG TO LAS VEGAS

In order to be able to offer our products to as many customers as possible, we visit up to 14 trade fairs worldwide every year. We are not only represented national, for example at the Hamburg HSV, Merchandising Fair, but also internationally on site. We are serving the Asian market at the HKTDC Hong Kong, while at the JCK Show Las Vegas we are primarily able to inspire American customers. In this way, we regularly make further valuable contacts and gather enough experience and impressions to be able to continuously develop our products.

 **Lufthansa City Center**
Pforzheimer Reisebüro

OVER 75 YEARS OF QUALITY, DIVERSITY AND FLEXIBILITY



1946

Friedrich Kirschner, the grandfather of today's managing directors Uwe Rohde and Annette Wiedermann, began producing the first semi-finished jewelry products and led the company under his name

1978

Helmut Rohde took over the family business from his father-in-law and continued it under his name together with his wife Ingeborg Rohde, née Kirschner.

1992

The company moved in the new building at the current location in Wimsheim. Uwe Rohde and his sister Annette Wiedermann started active leadership in 1992 and 1993 respectively.

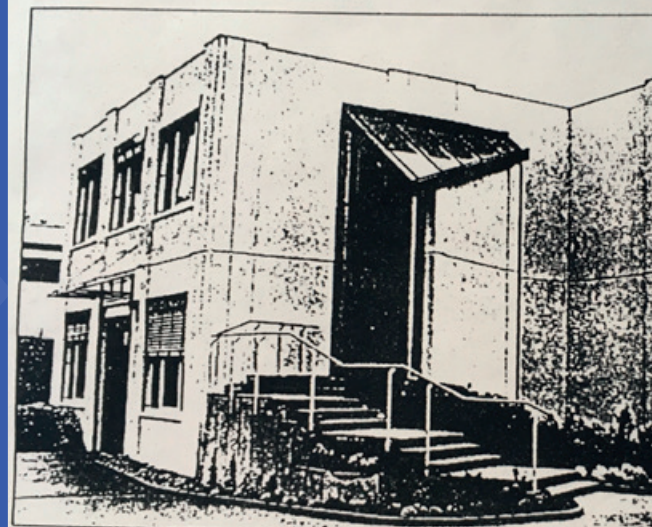
1998

Uwe Rohde and his sister Annette Wiedermann dedicated themselves to management tasks and accompanied Rohde Schmuckwaren GmbH to further success. Both had been actively involved in the company since 1992 and 1993 respectively. By founding a GmbH, a milestone was set for further expansion.

2001

First international gems and jewellery exhibition at the fair in Bangkok. Rohde Schmuckwaren GmbH has proven itself as one of the first German Exhibitors there.

WICHTIGE INFORMATION



Einen schmacken Neubau erstellte die Firma Rohde im Wimsheimer Industriegebiet an der Daimlerstraße

Ständig gewachsen

1978 übernahmen Schwiegersohn Helmut Rohde und seine Frau Ingeborg die Firma mit rund sechs Beschäftigten. 1982 folgte der Umzug

an der Daimlerstraße ein großzügig dimensionierter Neubau erstellt, der in den beiden Etagen noch über genügend Reserveflächen verfügt. Während sich im Obergeschoß die

Bauten beschäftigten, wurden die Schmuckindustrie hauseigenen Gebäude. Bauherrn wurden die Betriebsabteilungen und das

www.beka-bell.de

Made in Germany

ggrimm galvanotechnik

Hans-Meid-Straße 5
75173 Pforzheim

Telefon: +49 7231/4240328
E-Mail: m.grimm@ggtechnik.de
www.ggtechnik.de

2006

Mr. Rohde and Mrs. Wiedermann took over the company LG Findings GmbH (Leach & Garner GmbH) and since then they have managed it as an independent subsidiary under the name LG Findings GmbH at the Wimsheim location.

2008

Helmut Rohde handed over the company to his son Uwe Rohde and daughter Annette Wiedermann and started his well-deserved retirement.

Since
2019

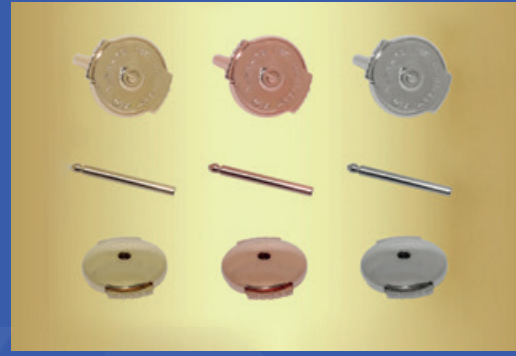
The company follows the path to more climate protection. Solar system was installed on the entire company building. The vehicle fleet is gradually being converted to e-mobility.



Additional:

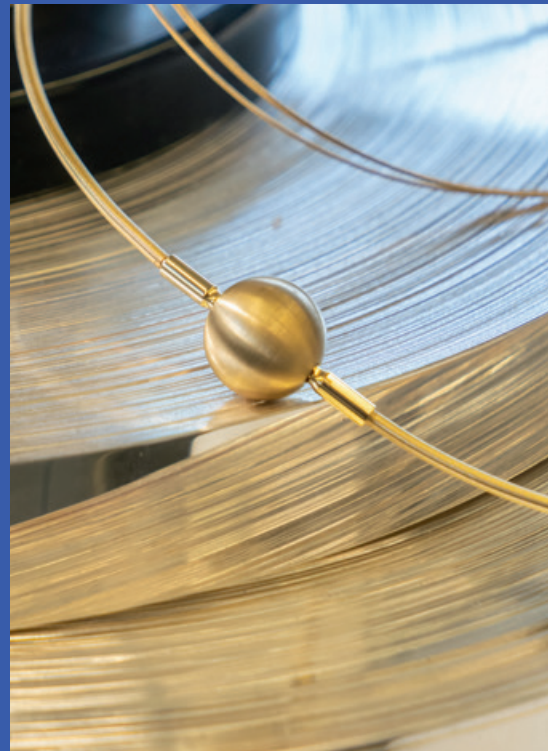
- Environmental green dot certificate for participation in the dual system for the recycling of sales packaging.
- Recycling certificate for active environmental protection for the residue-free recycling of our production residues containing metal at WRC.
- Conversion to LED lighting in the entire company building.





OUR SERVICES

- Precision turned parts in gold, silver and stainless steel according to customer specifications
- Deburring and polishing of metallic workpieces in vibratory finishing systems
- Laser welding of small parts made of precious metals or stainless steel
- Finishing chains in any alloy
- Soldering chains and small parts in gold and silver
- Stamping of stamp plates and clasps made of gold or silver with customized customer stamps
- Bonding work on metallic and non-metallic parts
- Stamping and embossing of small parts
- Laser marking
- Manufacturing and packaging
- Cutting metallic and non-metallic work pieces to length





OUR KNOW-HOW FOR YOUR SUCCESS





ROHDE SCHMUCKWAREN GMBH

Daimlerstraße 20

71299 Wimsheim

Tel.: +49 7044 9426-0

Fax: +49 7044 9426-26

info@rohde-schmuck.com

www.rohde-schmuck.com



Sustainability
in precious metals
is not our second
nature. **It's our first.**

As your reliable partner, we take professional care about recycling of precious metals, turning and milling services, semi-finished products as well as ring blanks and watch cases.