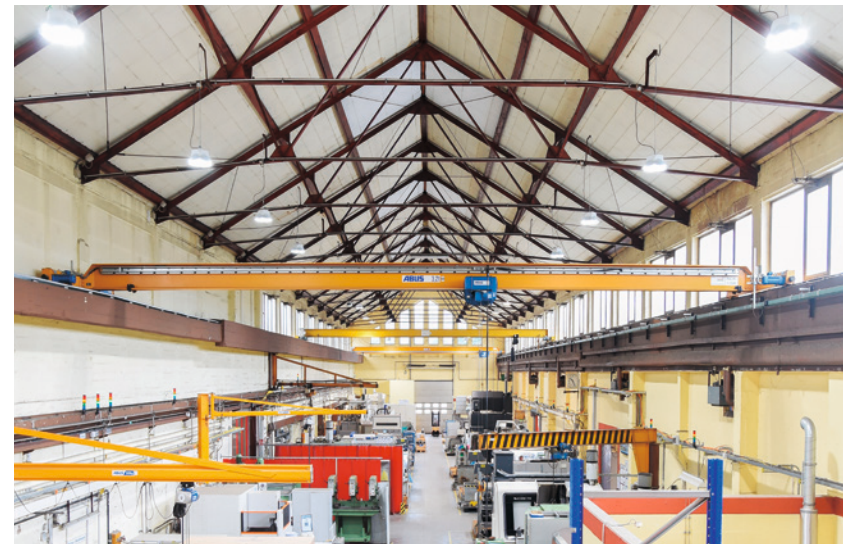
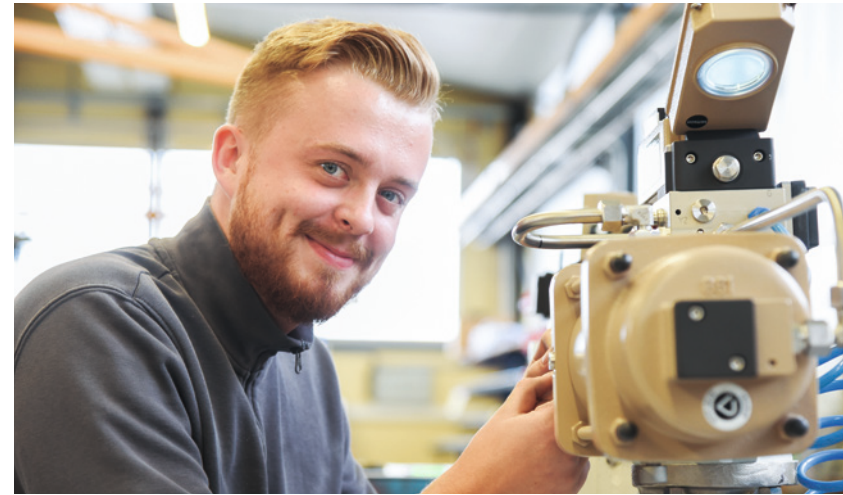


VETEC Ventiltechnik GmbH – Tradition and Perfection Since 1900



SMART IN FLOW CONTROL

ROTECH

SYSTEMKOMPONENTEN

Ihr Spezialist und zuverlässiger Partner für Rückmeldeeinheiten und Antriehszubehör

Mit steigendem Automatisierungsgrad in der Prozesstechnik wird auch das Feedback der Armaturenstellung, die flexible Ansteuerung oder Regelung von Armaturen und die Einbindung in Bus-Systeme und Diagnostik immer wichtiger.

Wir bieten Ihnen ein breites Spektrum an Rückmeldeeinheiten zur Überwachung von Zwischen- und Endlagen. Beginnend bei einfachen Mikroschaltern bis hin zu intelligenten Steuerungssystemen in einer Vielzahl von unterschiedlichen Gehäusevarianten. Diese können nicht nur auf pneumatische Antriebe, sondern auch direkt auf Armaturen aufgebaut werden. Zu unserer Kernkompetenz gehört auch der Aufbau von komplexen Steuerungen und kundenspezifischen Lösungen.

Unser Produktportfolio beinhaltet umfassendes Antriehszubehör, wie auch nach Kundenwunsch gefertigte Kupplungen, Konsolen, Adapterflansche und Adapterhülsen zur formschlüssigen Verbindung von Schwenkantrieben mit Armaturen.

✓ seit 1990

✓ Marktführer von Antriehszubehör

✓ Innovative Ideen

Offene Aufbauten

Automatisierung

Diagnostic Monitoring

Sonderlösungen

ROTECH Antriebselemente GmbH
Im Katzentach 16-18
76275 Ettlingen



info@rotech.de



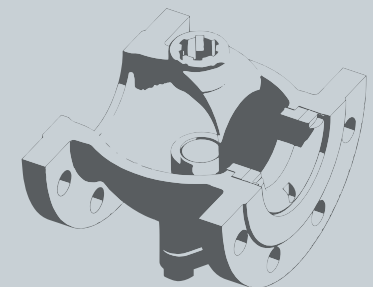
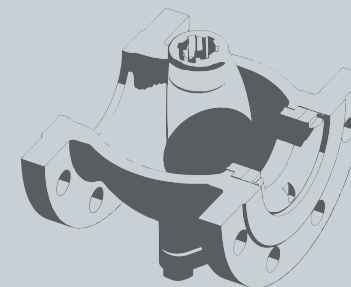
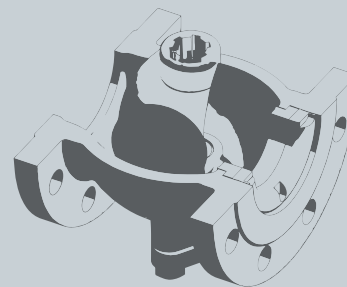
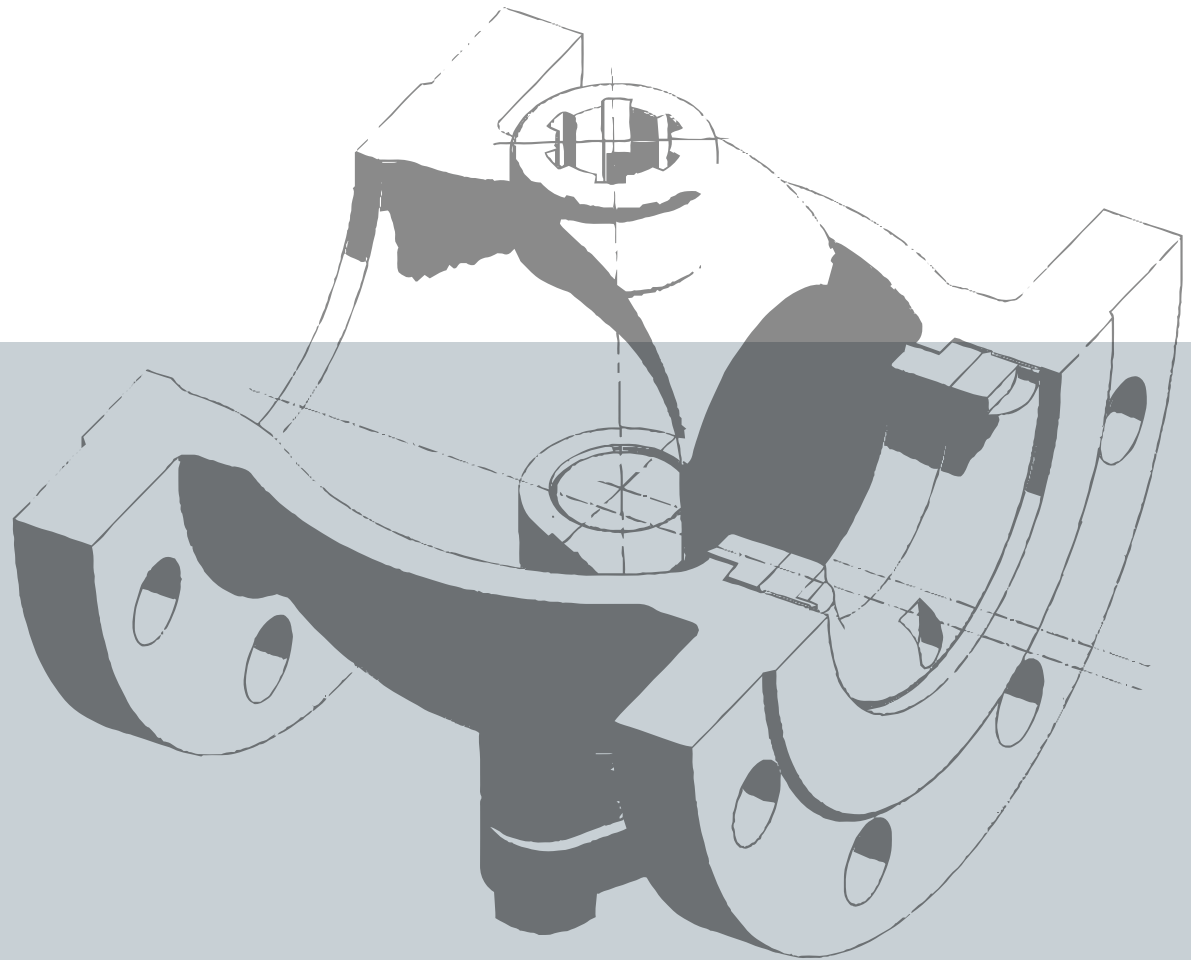
+49 (0) 7243 5931 0

www.rotech.de



Our topics

About us	4
Our vision, mission and values	5
The journey is the destination: history	6-7
Reliable partner for challenging applications	8
Rugged equipment for a wide variety of applications	9
VETEC goes green... sustainable and modern	10-11
We are a SAMSON group company	12-13
Global presence with a local touch	14-15
Reliable products with a long service life	18
In-house manufacturing: we are proud of our manufacturing capabilities	19
Lathing	20
Milling	21
Electrical discharge machining	22
Special materials: a particular challenge	23
Overlay welding (cladding)	24-25
High-pressure testing: safety first	26
Paint coating	27
Assembly	28-29
Design and development	30
Focus on safety	32
National and international certifications and approvals	33
Logistics: processes and flow of materials within the factory	34
Our supplier network	35
We are active wherever our customers need our support	36
Investing in the next generation	37
VETEC looks ahead	39
How to find us	40



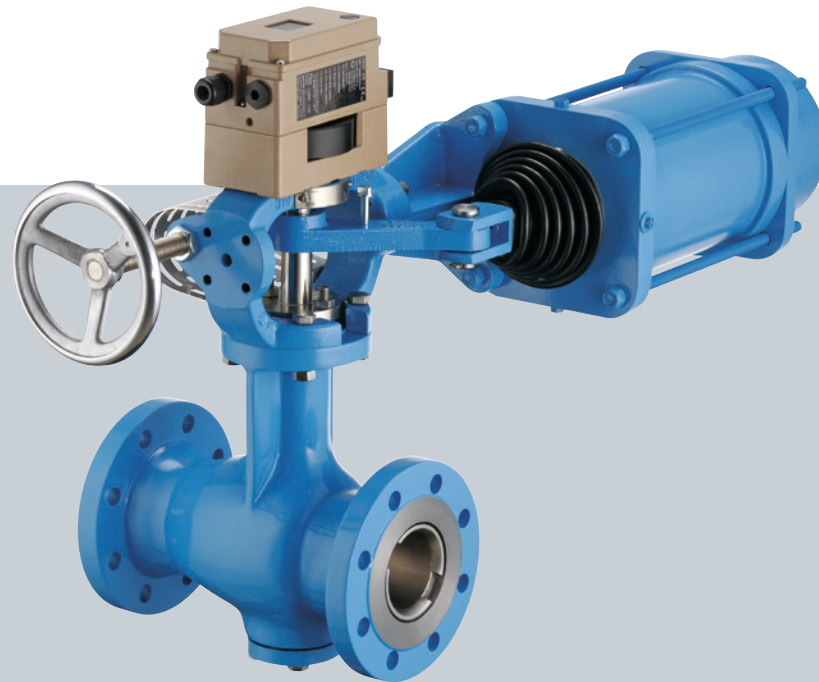
About us

Welcome to VETEC Ventiltechnik GmbH

We combine sound engineering expertise, products that meet the highest standards and a high level of commitment to quality. This makes us the ideal partner when it comes to precision-made control equipment.

Since the very first valves were made in 1964, VETEC stands for custom-engineered double-eccentric rotary plug valves as well as globe and angle valves. Specialty valve engineering is our business. It is what we do best. Our valves are developed and engineered to meet specific process requirements. Their performance and durability have been proven many times in plants all across the globe.

The VETEC facilities covering a 20,000 m² area are located in southwestern Germany in the town of Speyer on the river Rhine. A total of 120 employees (including four field sales staff members) serve the German market as well as international markets with the support of the SAMSON sales and after-sales network.



VETEC: the specialist for custom-made double-eccentric rotary plug valves and high-pressure angle valves

> 20.000 m²
production area

120
employees



Scherf Apparate & Werkzeugbau

Nelkenstrasse 6 · 68535 Edingen-Neckarhausen
Tel. 0621 471284 · info@werkzeugbau-scherf.de
www.werkzeugbau-scherf.de



Lehren- u. Messwerkzeuge
Schneidwerkzeuge

Im Bergfeld 21 • 76744 Wörth am Rhein
Telefon: +49 07271 126870
Mail: info@werling-werkzeuge.de
www.werling-werkzeuge.de

**SCHMIERSTOFFE
NEU GEDACHT.
SEIT 1834.**

www.bechem.com



Our vision, mission and values

OUR VISION

- We strive at always acting as a reliable and competent partner for our customers. Customer service has top priority and forms the basis for establishing long-term business relationships with our customers.
- For our motivated and committed workforce, we want to offer an attractive work environment and secure jobs in the long term.
- Our ambition is to improve our sustainability in the coming years. This will involve further reducing our carbon footprint and achieving profitable growth in a sustainable way.

OUR MISSION

- We support our customers across the globe in cooperation with SAMSON sales subsidiaries and other SAMSON group companies.
- Our valves are unmatched in terms of high quality and long service life.
- For us, customer service means focusing on what our customers need.

OUR VALUES

- VETEC supports and actively helps staff members to enhance their soft skills and gain further professional and management qualifications.
- Occupational health and safety as well as health promotion activities have absolute priority at our company. We work with an external plant safety engineer to minimize hazards and ensure that our workforce remains safe.
- We take on social responsibility within the community and invest extensively in vocational training.

Uwe Vogel, Chief Executive Officer 2015 to 2022



Ahmad Razak, Chief Executive Officer since 2023



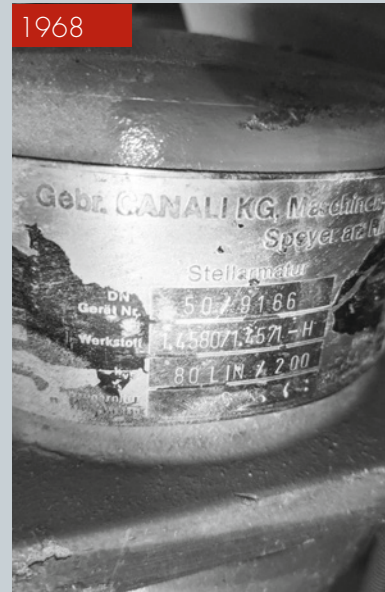
The journey is the destination



The roots of the company date back to **1900** when the family-run engineering business "CANALI Maschinenfabrik" was founded.



In **1964**, CANALI Maschinenfabrik expanded its business to include the manufacture of control valves and pneumatic actuators.



Between **1968 and 1970**, development of a new product line, the double-eccentric rotary plug valve, laid the foundation for present-day business.



In **1988**, a significant milestone was reached when the company joined the internationally operating SAMSON headquartered in Frankfurt am Main.



VETEC looks ahead **2022**: VETEC is a modern industrial company with sustainable operations serving as a dependable business partner.



Reliable partner for challenging applications

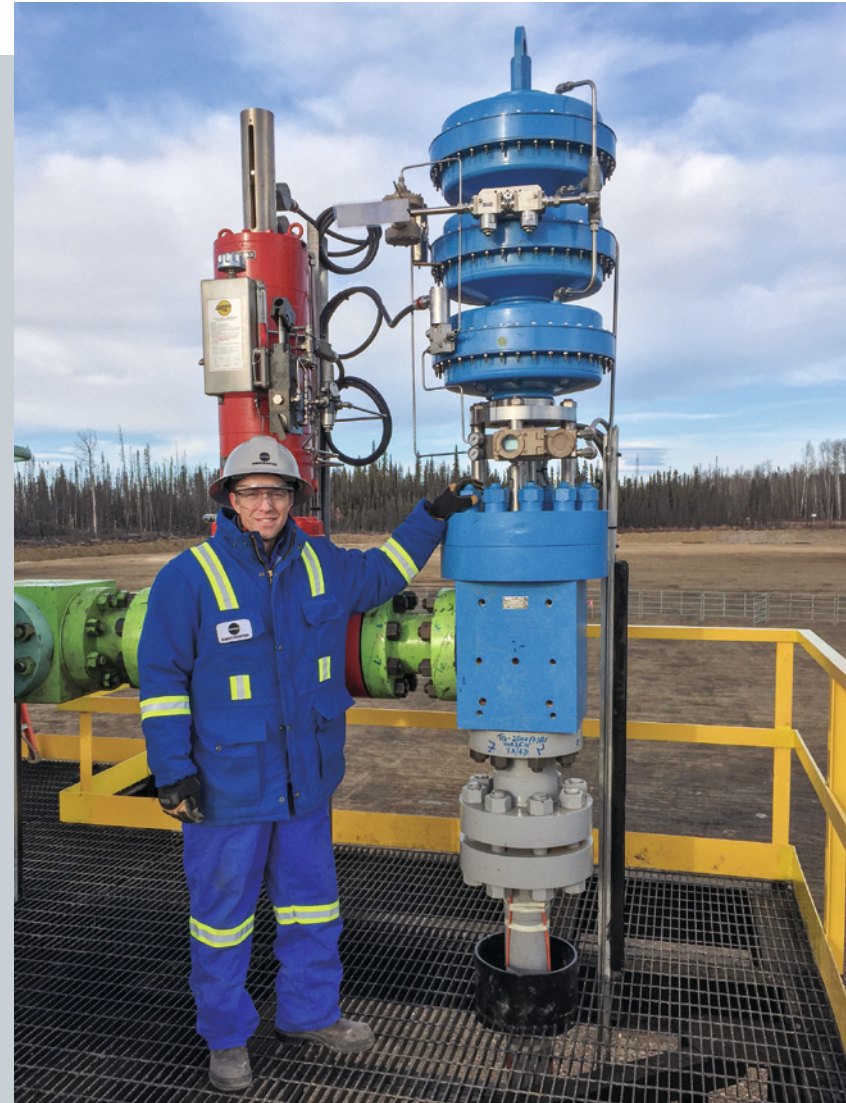
Our aim is to supply high-quality valves that meet the strictest requirements. VETEC valves are rugged equipment used in a wide variety of applications in the process industry. Thanks to our extensive product range and the variety of materials that we offer, we are able to implement even the most toughest customer specifications. Feel free to contact us. We will gladly support you.

Rotary plug valves

- High flow coefficients
- High rangeability
- Excellent control response
- Resistance to erosion, abrasion and corrosion
- Wide product portfolio of valves up to DN 600/PN 160 and NPS 24/Class 2500

High-pressure angle valves

- Specially designed for high-pressure applications
- High durability and resistance to wear
- Rugged, compact design



Natural gas; $\Delta p = 962 \text{ bar}$; API NPS 4 1/16; 15000 psi

Rugged equipment for a wide variety of applications

Industries in which our valves can be found:



Chemicals and petrochemicals

Acrylic acid, ethylene oxide, butadiene, bitumen, molten plastic, ammonia, hydrocarbon gases, steam



Oil and gas *(midstream and downstream)*

Sour gas, LNG, distribution and supply processes, media containing solids, crude oil, naphtha



Industrial gases

Cryogenic gases (e.g. oxygen, nitrogen, hydrogen)



Special fields of application

Control valves with safety function
- GAR / EN 161 / DVGW
- CERTCO
- Fire-Safe: DIN EN ISO 10497 / API 607



Water and wastewater

Water treatment, desalination, process cooling systems



Pulp and paper

Fibrous media



Energy distribution

District heating and cooling



Metallurgy and mining

Ore extraction (abrasive and corrosive slurries)

VETEC goes green... sustainable and modern



Sustainability is playing an increasingly important role in our business operations. Sustainability counts in all areas. It is relevant to the environmental impact of our company. It is a major issue for our customers. We are working on a more sustainable use of our resources for the sake of the environment and society as a whole.

The key to sustainable development is exploiting renewable energy sources. VETEC has installed new furnaces fueled by wood pellets at its headquarters in Speyer. The new heating system replaces the oil-fired boilers that we had. This measure will save up to 200 tons of CO₂ emissions per year.

This is the first stage of our modernization plan, which includes the installation of a new central heating system as well as a new warehouse and administration building, which are currently under construction. These buildings are set to replace the existing buildings that were erected almost 100 years ago. Our pipe distribution network has been renewed and insulated with modern materials to minimize heat loss.

We have eliminated or greatly reduced the use of paper in our offices. In our factory, where possible, we recycle metal waste, such as metal chips, which are generated during the manufacturing process. Any remaining consumable materials are reused.



We are currently planning photovoltaic installations to produce green electricity to power our machinery. Any surplus energy will be fed back into the grid.

Naturally, we take a long-term approach when it comes to our most important resource: our employees. We provide ergonomic workplaces, optimal lighting conditions and modern ventilation to ensure the well-being of staff. But that's not all: a wide range of company sport activities are offered including organized walks, yoga courses and even a table tennis table in our unique recreation building solely for staff breaks. These are also key factors that promote the internal communication and team spirit within the small company.



Kluge Köpfe für KnowHow und Expertise



Unterstützen

Beratung, Planung und Umsetzung in Arbeitssicherheit, Brandschutz und Elektroinstallation



Prüfen

Prüfung von überwachungspflichtigen Arbeits- und Betriebsmittel durch befähigte Personen



Lernen

Offene Seminare und Inhouse-Lösungen für die Aus- und Weiterbildung Ihrer Mitarbeiter



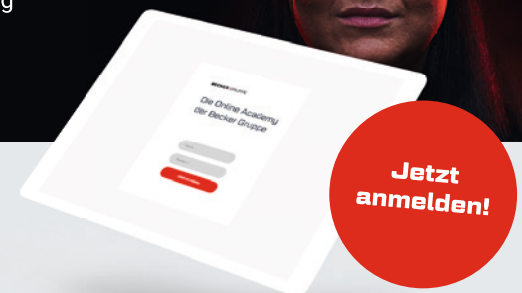
Digitales Schulungssystem

Unser Expertenwissen wird online zur Verfügung gestellt, ist leicht verständlich und entspricht den gesetzlichen Vorschriften. Alle nötigen Nachweise stehen direkt nach einer Unterweisung oder Qualifizierung online und zum Download zur Verfügung.



Aline Geyer

+49 (0) 6831 501 51 23
geyer@becker-gruppe.com



We are a SAMSON group company



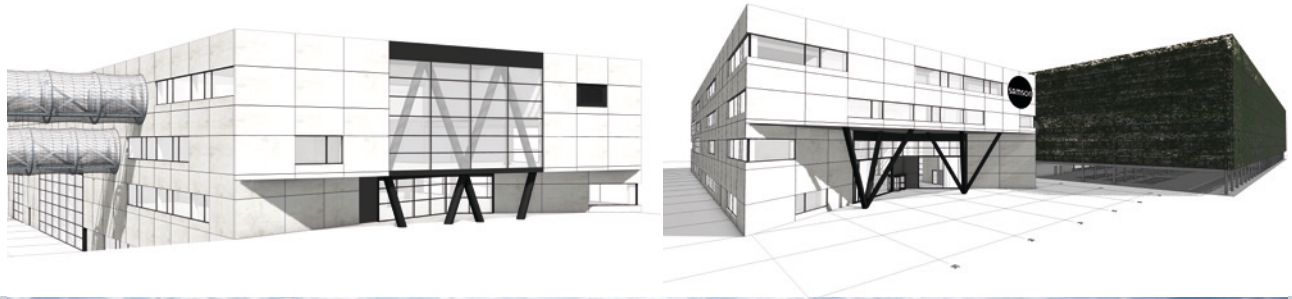
SAMSON is recognized worldwide as a synonym for high quality, responsibility, entrepreneurial continuity and innovative strength. SAMSON is not only known for a complete product line in instrumentation and controls but also offer the most modern integrated automation systems.

SAMSON, founded in 1907, is an international company with more than 4,000 employees worldwide, of those 1,600 work at the Frankfurt headquarters.

SAMSON and its group companies: a group of valve specialists

VETEC Ventiltechnik GmbH, together with SAMSON AKTIENGESELLSCHAFT and its group companies AIR TORQUE, CERA SYSTEM, KT-ELEKTRONIK, LEUSCH, PFEIFFER, RINGO VÁLVULAS, SED and STARLINE, offer the full range of control equipment used in industrial processes from a single source.

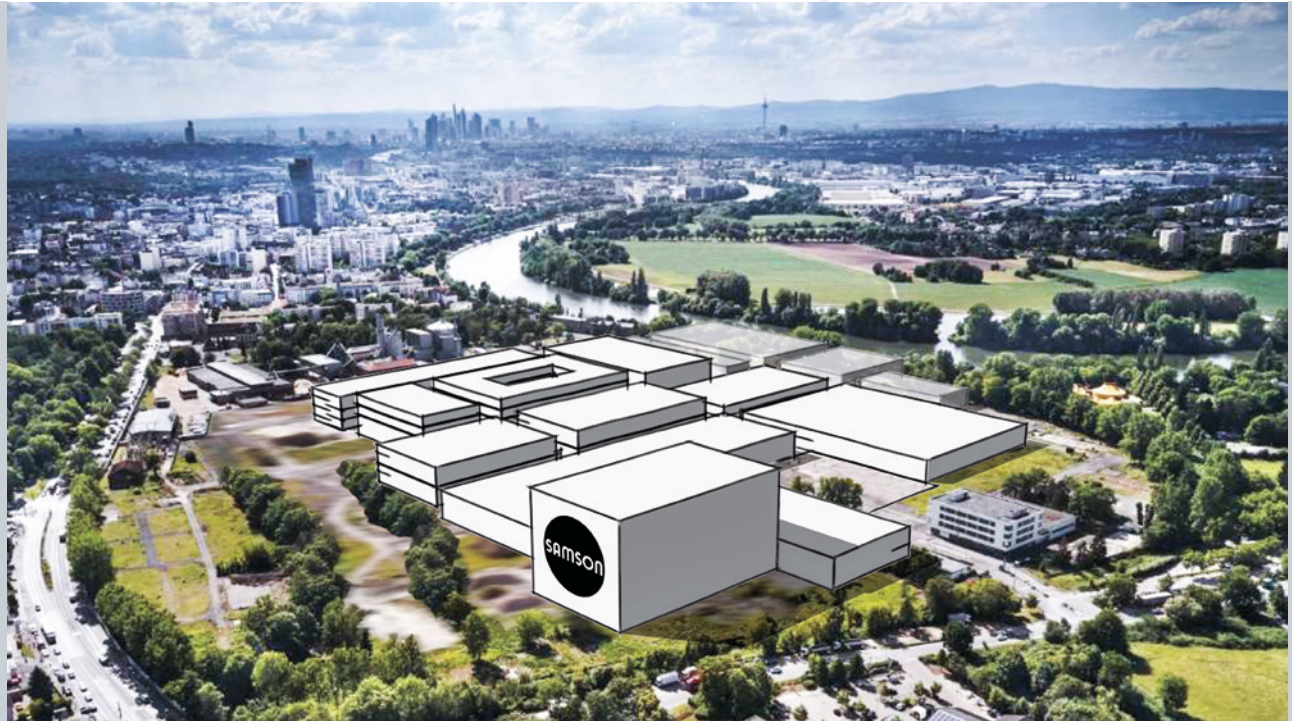




MainChange relocation project

The MainChange project to relocate the SAMSON headquarters from Frankfurt to Offenbach marks an important milestone in the history of SAMSON.

An ultra-modern urban factory will be built on an approx. 140,000-m²-large plot of land located on the Offenbach Innovation Campus.



Kerner GmbH
CNC -Fertigungstechnik

- ◆ Maschinenbau
 - ◆ Heiztechnik
 - ◆ Autoindustrie
 - ◆ Lufttechnik
 - ◆ Hydraulik
 - ◆ Werkzeuge
- www.cnc-kerner.de



Industriestraße 42 • 66994 Dahn • Tel.: +49(0)6391 3503 • E-Mail: info@cnc-kerner.de

FLURO®-Gelenklager GmbH



#höchstgelenkig #stabileverbindung #mitvielköpfchen #geschmeidigebewegung

FLURO®-Gelenklager GmbH
Semenstr. 13 | 72348 Rosenfeld
Tel. 0 74 28 / 93 85 - 0 | Info@fluro.de
www.fluro.de

Global presence with a local touch

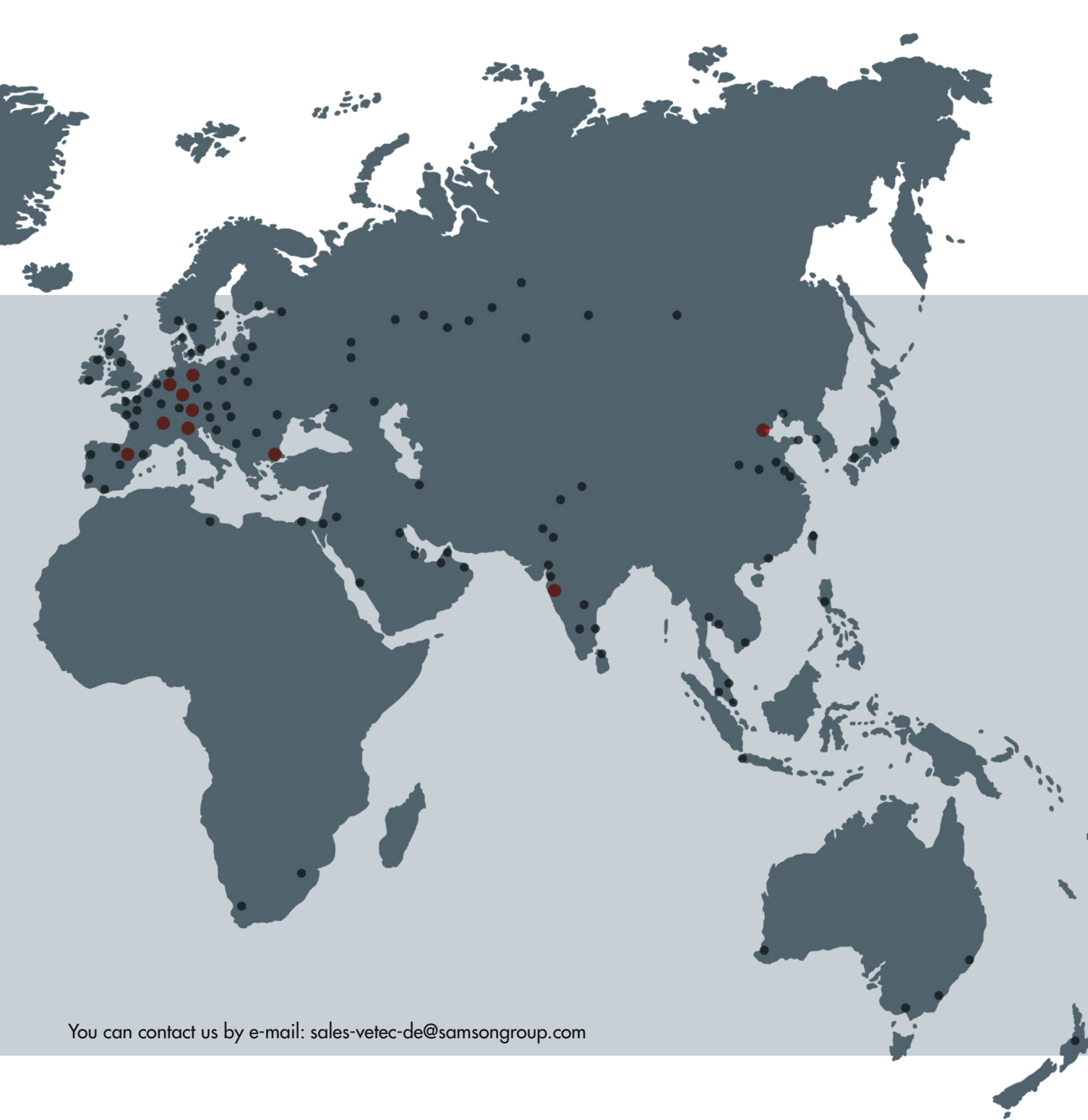
SAMSON AKTIENGESELLSCHAFT has established a global sales and after-sales service network that includes more than 50 subsidiaries and over 200 representatives worldwide in over 40 countries. By joining the SAMSON group, VETEC has access to international markets served by the group.

VETEC operates its own sales network within Germany. Our team of qualified field sales staff makes site visits to find custom-engineered solutions to satisfy control requirements that our customers require. Flexibility and the proximity to our customers contribute to our success. We offer a wide array of services that range from consultation, planning and start-up to after-sales service activities.

The in-house sales department, which is responsible for quotations, order processing and project management, supports the VETEC field sales team and acts as a link to the SAMSON sales network.

“Even during the pandemic, site visits were still unavoidable”, explains Mr. Frank Nolte, head of the field sales team.





50
subsidiaries

200
representatives
worldwide

40
countries

You can contact us by e-mail: sales-vetec-de@samsongroup.com

Über
25 Jahre
Erfahrung!

Die Liebe zum Detail umfasst unsere sorgfältige Arbeit und den Anspruch auf beste Qualität. Mit diesem Maßstab legen wir den Fokus auf zufriedene Mitarbeiter und die Zufriedenheit unserer Kunden. Wir zeichnen uns durch hohe Handwerkskunst und projektindividuelle Lösungen aus. Als erfolgreicher Handwerksbetrieb mit über 30 Mitarbeitern arbeiten wir regional mit gewerblichen Kunden zusammen.

**Ihr Metallbauer für die
gesamte Gebäudehülle.**



- 
-  Gebäudehülle
 -  Dach
 -  Fassaden
 -  Glas
 -  Beschattungen
 -  Sanierungen



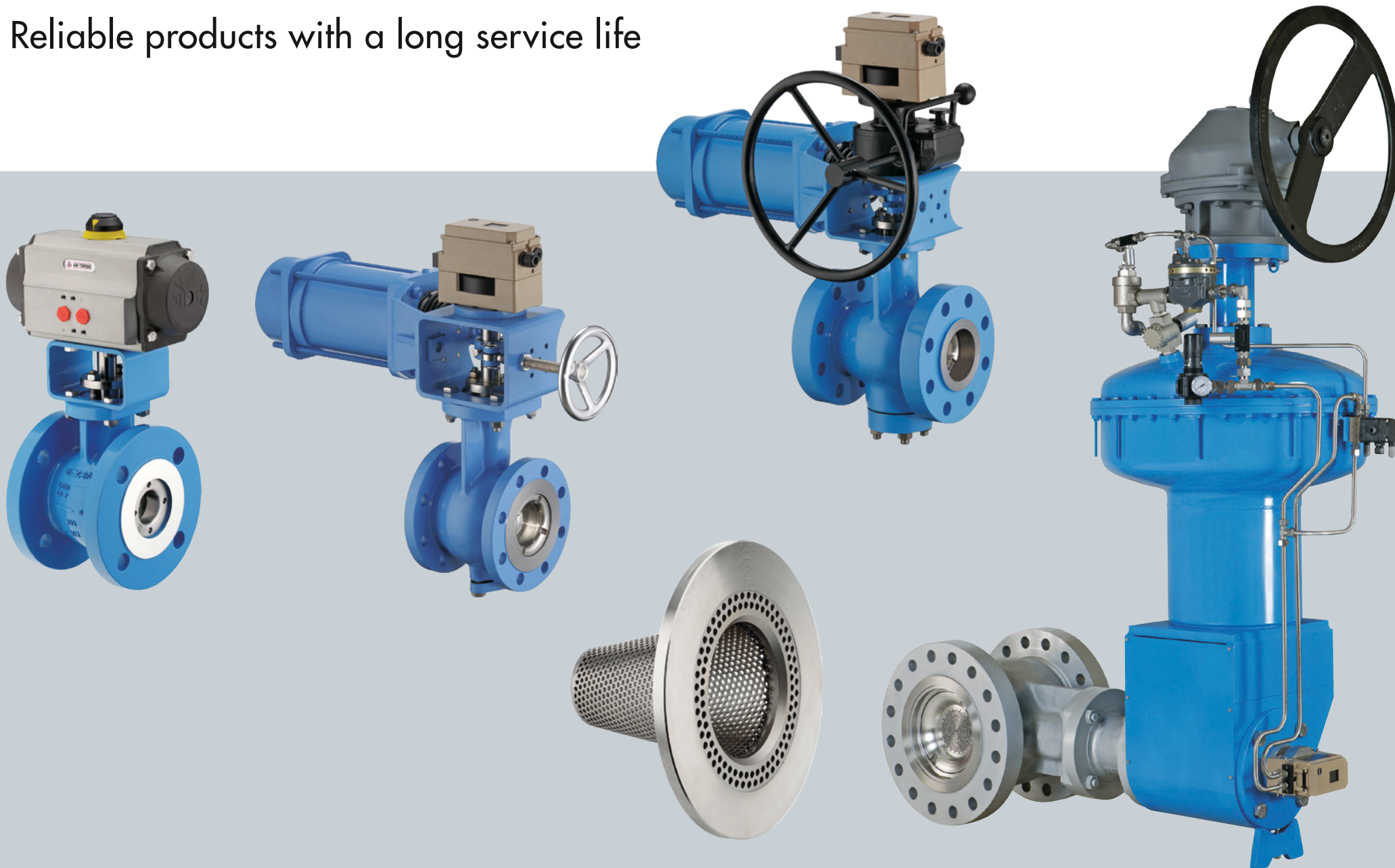
www.rolli-speyer.de



Wir geben Ihrem Gebäude
ein **neues Gesicht.**



Reliable products with a long service life



In-house manufacturing: we are proud of our manufacturing capabilities

Our skilled team manufactures high-quality valves on a production area of over 20,000 m² using state-of-the-art machinery and equipment. Valves can be manufactured from a wide selection of materials for almost any application. The collaboration of man and machine is the key to our success.

Thanks to our high level of in-house manufacturing, we are able to manufacture to a high standard and retain full quality control over all of our processes.

Our valves, which can weigh up to three tons, are assembled together from around 30 parts. Some of these parts are even one meter in length. We mainly use carbon steel and high-alloy steels. However, depending on the requirements and application, our valves can also be made of special alloys including Stellite®, duplex and super duplex steels, Inconel®, Hastelloy®, titanium and zirconium. We have specialized in working with materials that are difficult to machine based on decades of expertise in this field.

Even for urgent orders placed at short notice, we are able to quickly manufacture specialty valves to specification. Thanks to our manufacturing capabilities, we can precision machine custom parts ourselves if they are not available.

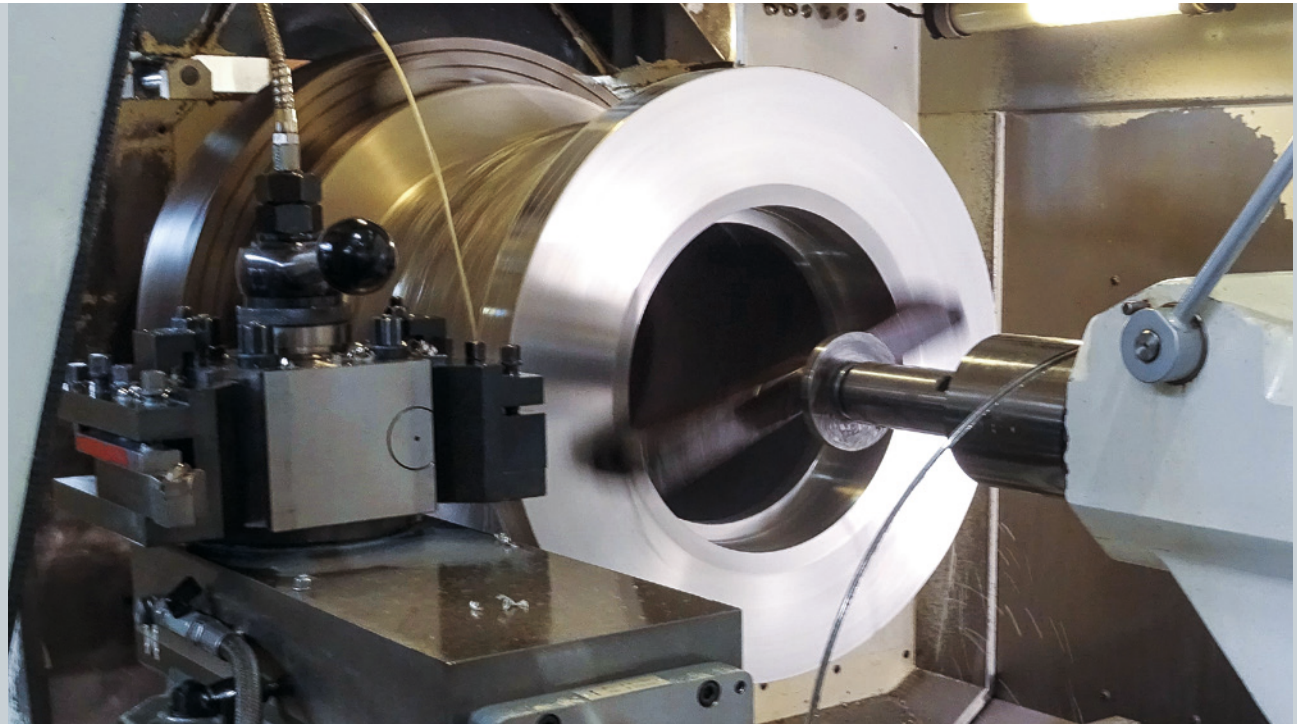


Lathing



We are especially proud of the wide range of state-of-the-art machinery that we have. It makes it possible for us to manufacture as many parts as possible in our own factory. Since decades, we rely on semi-CNC lathes and CNC high-precision lathes for our machining operations. Semi-CNC lathes are ideal for one-off or small-batch machining of turned parts due to their controlled cycle and fast programming capabilities. Five of these lathes are in operation with swing over bed capacities from 330 to 1300 millimeters.

As Mr. Alexander Helm, head of NC machining, explains: "The controlled-cycle lathes are ideal for our needs. They are rugged, easy to operate and have very short setup times."



Exakte Einzelteil -, Klein - und Großserienfertigung nach Ihren Vorgaben!

www.bauer-maschinenbau.com

BMB
BAUER
Maschinenbau

Gewerbestr. 2a
08427 Fraureuth
Fon: 037600/56699-0



hightech **ceram[®]**

Hightech-Ceram - Ihre erste Wahl
Gewerbepark 11 · 96528 Frankenblick
0 2449 911003 · info@hightech-ceram.de
www.hightech-ceram.net

Milling



Our milling centers are high-precision machines that can take very heavy table loads. Our skilled machine operators are responsible for machining blanks and bar stock to produce highly complex valve body designs weighing up to several tons.

The commitment to manufacture as many parts as possible ourselves is reflected in the variety of manufacturing processes that we master including the conventional metal-working method of milling.



Von-Denis-Straße 7 · 67346 Speyer
Telefon: 06232-6790680 | www.ruthig-ingenieure.de



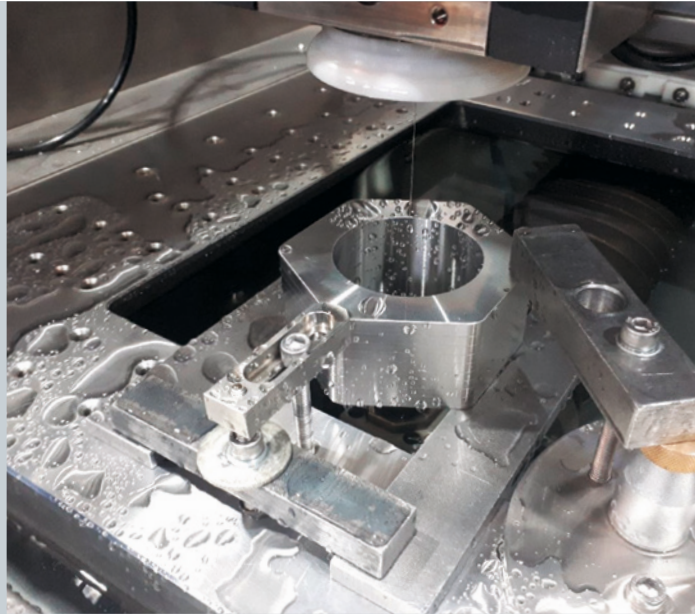
www.h2r-automation.de

Electrical discharge machining

We rely on our wire EDM machine for high-precision cutting operations that helps minimize the setup time. This machine is used to manufacture complexly shaped parts in one-off runs.

This machine is unparalleled when it comes to machining the shaft bearing. The resulting double offset of the shaft causes the plug to be immediately lifted out of the seat without any friction as soon as the valves open. This ensures a smooth opening action, resulting in a stable control response even at small opening angles. This machining operation creates a shaft-hub joint, a splined joint as a multiple drive-type connection, that is used to fit the rotary plug to the actuator shaft. It is an essential manufacturing process in our business, which is mastered to perfection by our production team.

"We manufacture first-rate products. This can only be achieved with the aid of high-end machinery", explains Mr. Alexander Helm, head of NC machining.

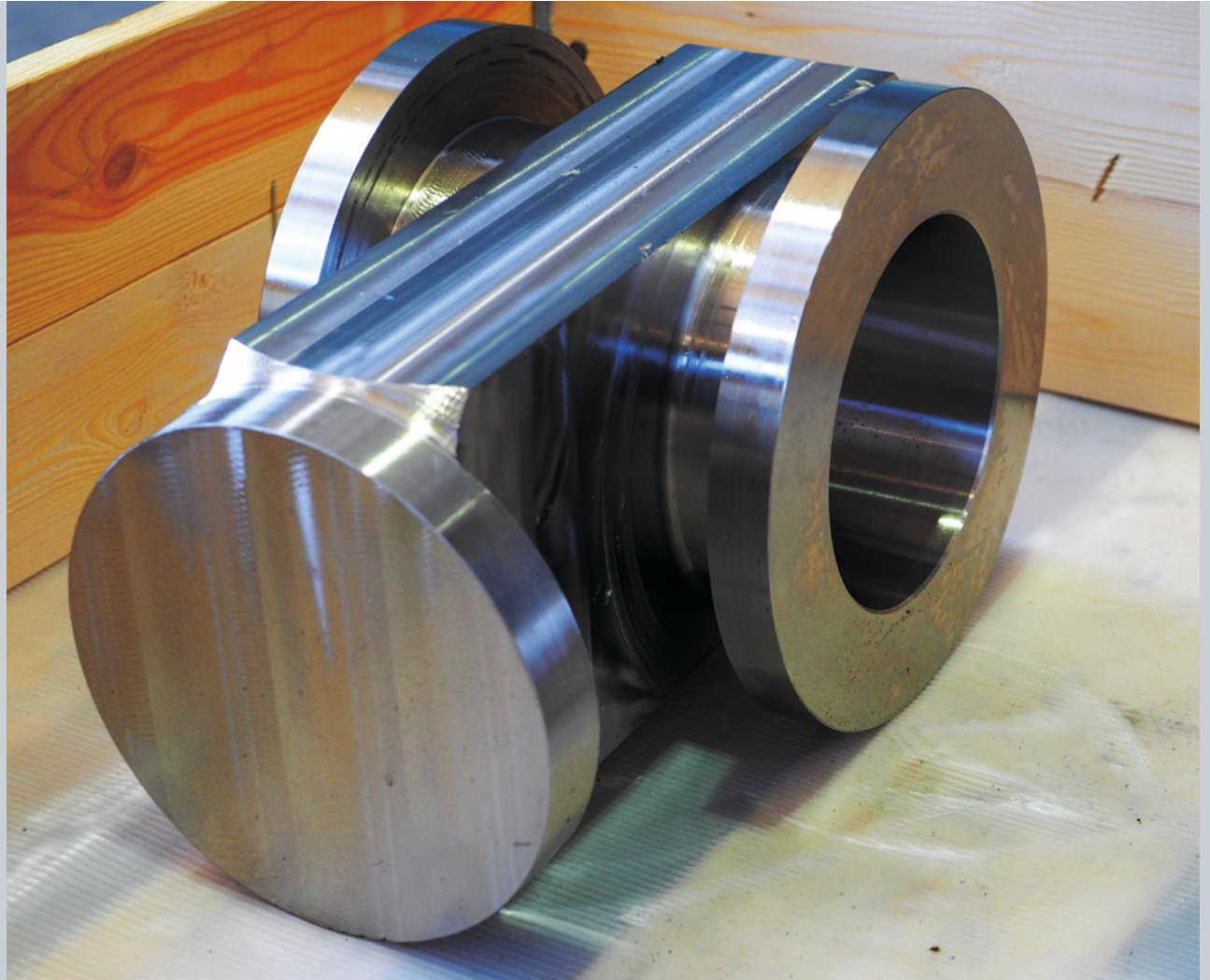


Special materials: a particular challenge

The use of special alloys has always been one of VETEC's core competencies. These alloys require the right tolerances and material combinations to achieve the optimal machining results.

A wide selection of valve body materials, such as bronze, carbon steel, high-alloy steel and special alloys including titanium, zirconium or Stellite®, is available depending on the process medium that flows through the valve.

Our valves can be engineered to control any process medium, no matter how challenging. Process media include boiling bitumen, steam, water, crude oil products, abrasive oil-sand mixtures in natural gas extraction or corrosive chlorine gas.



Milling of a blank: Hastelloy® valve body for special applications

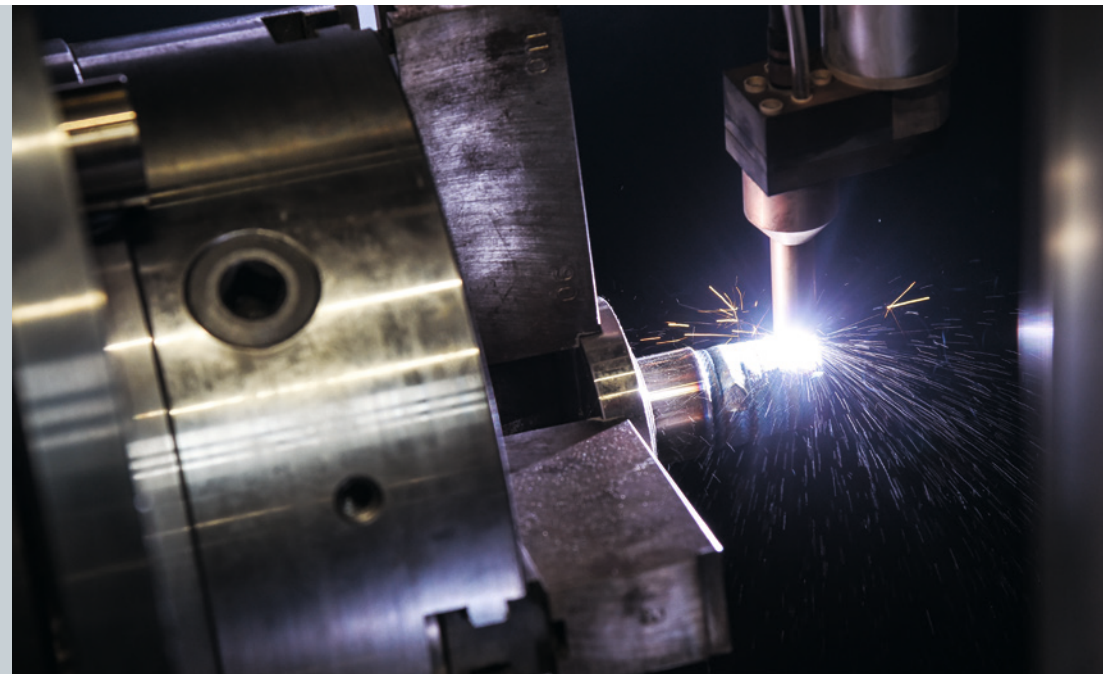
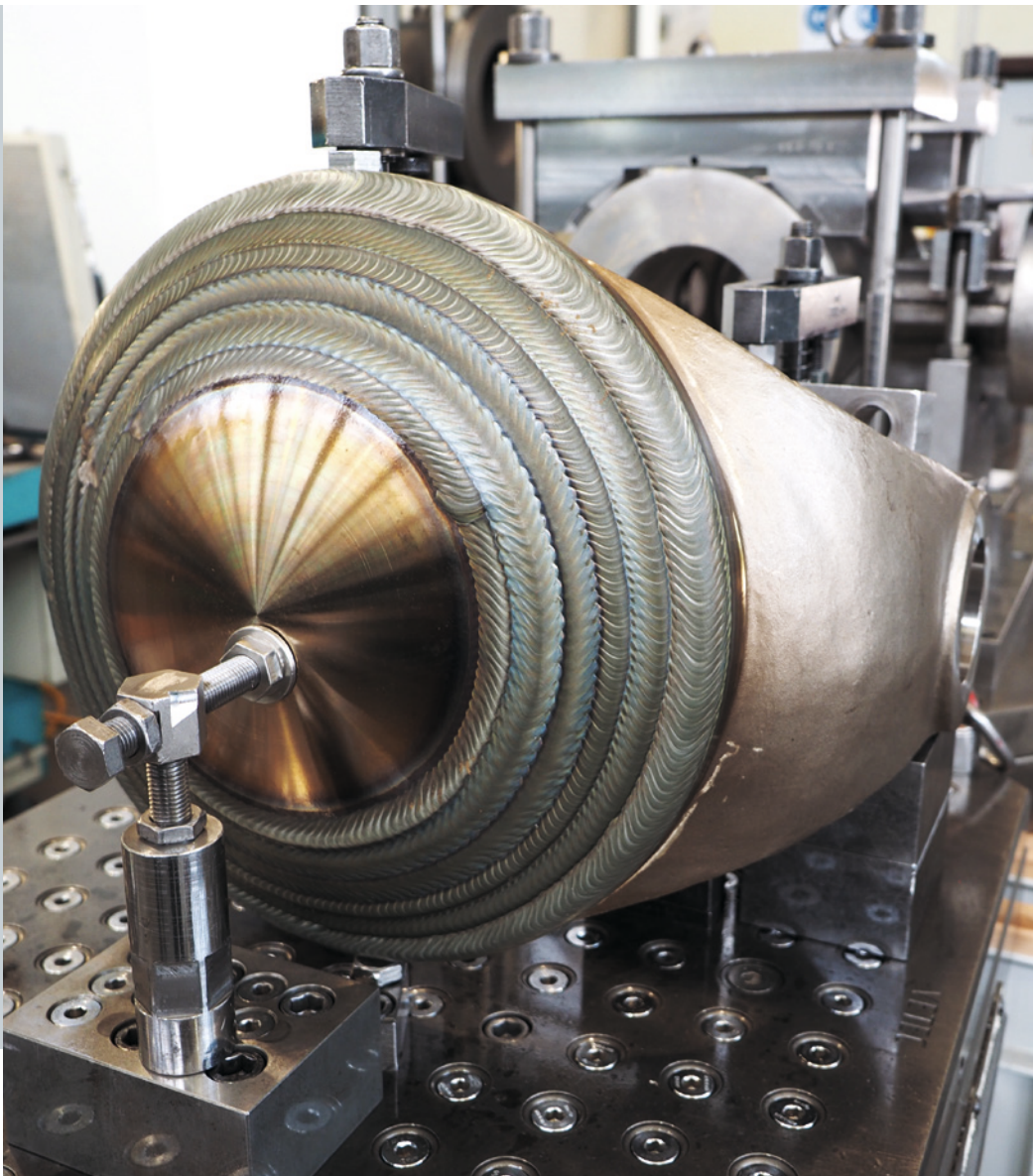
Overlay welding (cladding)

We continually review our processes along the entire value chain to eliminate any potential disruptions within the supply chain due to long lead times. For example, the outsourced cladding process to weld a protective cobalt-based alloy on the inside surfaces of the valve was found to be holding up the manufacturing process. After reviewing the process, the decision was promptly made in favor of insourcing. A new field of competence to apply the weld overlay cladding as anti-wear protection was introduced in the production.

In addition to setting up a welding cell and a centralized gas cylinder storage system, we invested in a four-axis automatic welding station including a rotating table (with maximum 600 kg load in the horizontal position) to properly weld all required geometries.

Besides introducing a new infrastructure and fulfilling procedure qualification records and the corresponding certification, we also needed to find the operating personnel with the required qualifications. In this particular case, we were confronted with the ongoing issue of a shortage of skilled workers. To actively work around this problem, we decided to further qualify our own welding operators.



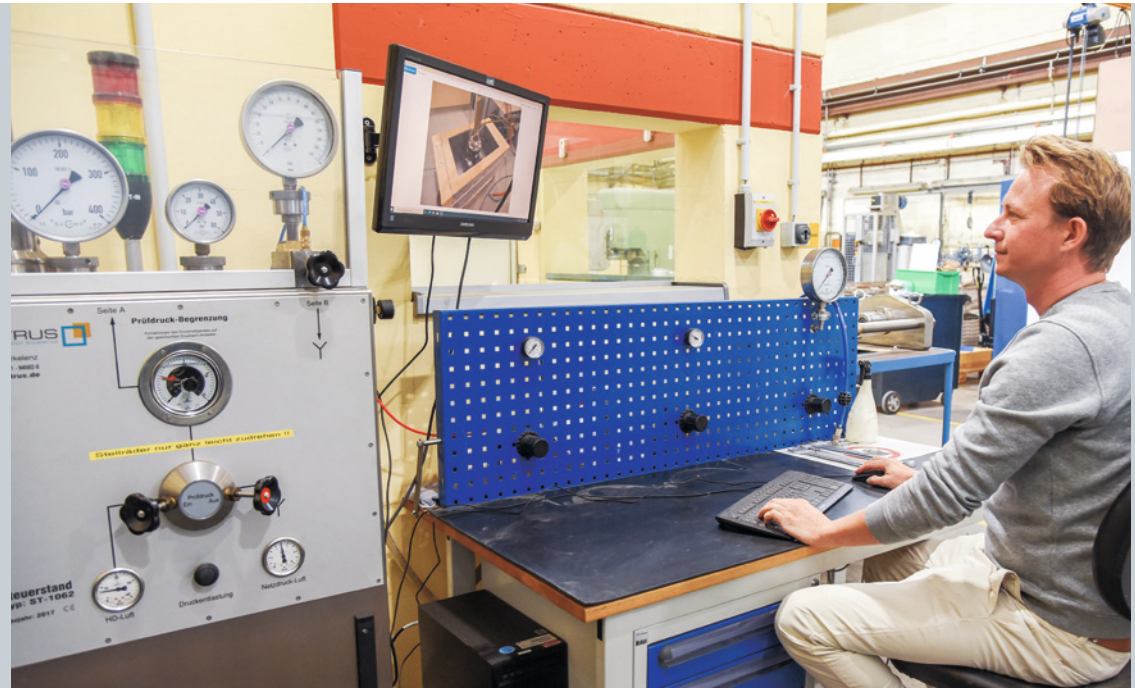


High-pressure testing: safety first

„...the focus must be on safety when the potential stored energy can increase 700 fold....“

Due to the compressibility of gases and the law of physics, the pressurization of pressure equipment may cause the potential stored energy to rise by up to 700 times. In such cases, stricter safety requirements are essential to handle the increased volume-pressure ratio.

We took on the challenge posed by such pressure conditions. It took us just one year to design, develop and construct our very own high-pressure test bench, which started operation in August 2017. The test bench is suitable for testing pressure equipment (valves) with gas. Testing is possible with test pressures of up to 300 bar and valve sizes up to DN 700/NPS 28 (corresponding to a volume of 350 liters). Modern technology makes it possible for our testing staff to read all parameters while testing is in progress. This is not a matter of course and we are particularly proud of this feature.



Paint coating



VETEC valves installed in customers' plants are designed to withstand the environmental effects as well as the mechanical or dynamic stress to which they are exposed throughout their service life. The external surfaces of the valve must be protected against corrosion to ensure operating reliability and durability.

To counteract damage caused by corrosion, the surface treatment at VETEC is performed according to paint suppliers' specifications under controlled processes and ambient conditions (e.g. constant temperature and air humidity monitoring) in a heated building.

Ongoing testing during the coating procedure additionally ensure that the surface treatment remains at a constant high quality.

The VETEC standard wet-paint coating systems are based on a wide assortment of paints produced by an internationally renowned paint manufacturer.



The VETEC standard wet-paint coating systems (VBS) are classified according to various durability levels (L, M and H) and corrosivity categories (C1 to C5-M):

- VBS1: corrosivity categories C1, C2, C3 with high durability Suitable for temperature range -60 to $+120$ °C; surface preparation according to DIN EN ISO 8501-1; for industry, chemical plants and coastal areas.
- VBS2: corrosivity categories C4, C5-I/-M with high durability Suitable for temperature range -60 to $+120$ °C; surface preparation according to DIN EN ISO 8501-1 and 2; for coastal and offshore areas with high salinity
- VBS3: coating system with high durability/suitable for temperature range 120 to 230 °C; surface preparation according to DIN EN ISO 8501-1 and 2
- VBS4: coating system with high durability, with temperature fluctuations and for dry heat. Suitable for temperature range 230 to 540 °C; surface preparation according to DIN EN ISO 8501-1 and 2

Advantages of wet paint coating:

- Ideal for one-off or small batches
- Multilayer coatings with variable layer structures possible
- Easy change of paint and component
- Coating of heat-sensitive components possible
- Customizable color

Assembly

VETEC stands for German engineering and control valves tailor-made to meet specific requirements. The first-rate valves that we produce meet the strictest requirements and highest demands.

Based on decades of experience, our professional valve assembly team (qualified industrial mechanics) is able to assemble valves and actuators with great skill and dexterity. Thanks to the team's proficiency, a consistent level of quality is maintained in all of the 60 products or more that we offer in their ready-assembled state.



Depending on the particular valve construction, it takes more than 30 parts to produce a ready-assembled valve before the actuator and valve accessories are mounted. The valve assembly team is also responsible for mounting the complex hook-up of the valve accessories. The mounted devices are used in safety-instrumented systems for emergency shutdown of the plant.

At the last production stage, the functions, actuating times and leakage of the final product are verified. The tests are conducted to ascertain compliance with the requirements specified in the Pressure Equipment Directive, regulations and QA specifications. The test results are documented.

As part of the in-house suggestions for improvements program, our employees actively contribute to the continual improvement process. A special team reviews the suggestions. Many of the proposed improvements are adopted and the employees who contribute are honored accordingly. This demonstrates how our employees with their qualifications and further training significantly contribute to the success of the company.

The mounting plate and the valve accessories mounted on it (shown below) is custom-made for a Type 73.7 High-pressure Valve designed for an application in NGL fractionation.



Design and development

Uwe Vogel, CEO at VETEC, is full of praise for the company's fields of expertise: "I am particularly proud of our product development team since mechanical engineering is my passion."

VETEC's particular strength and its daily bread involves the fulfillment of specific customer requirements as well as engineering custom solutions.

Our design engineers center on quality made in Germany. VETEC stands for rugged products of highest durability and prime quality.

At VETEC, our focus is on what our customers need for their process. Our innovations are not made for the sake of innovation; our innovations are the result of extensive co-operation with our customers. We offer a range of product training and basic training courses, which we can conduct on site at the customers or at our headquarters in Speyer. Our services also include providing advice on engineering matters as well as customer support throughout a product's life cycle. Course participants learn how to handle our products, starting with the configuration and spare parts management right up to maintenance.



Force and torque measurement with sensors in the valve shaft

COSCOM®

Zentrales Software ECO-System sichert Liefertreue bei VETEC



**Der Einsatz des zentralen COSCOM ECO-Systems
bringt Prozessbeschleunigung und -sicherheit
vom ERP bis an die Maschinen:**

Alle Informationen werden zentral gebündelt, aufbereitet und zur Verfügung gestellt. Die Vernetzung der gesamten Wertschöpfungskette mittels digitaler Zwillinge unterstützt VETEC, die Rüstzeiten zu optimieren und die Prozesse v.a. bei der Wiederholteilerfertigung drastisch zu beschleunigen.

**Direkt zum
Anwenderbericht:**
Einfach QR-Code scannen!



Software für die Fertigung
www.coscom.eu

Die Marke für Armaturen- und Online-Prüftechnik!

METRUS

Valve Test Bench Excellence



METRUS GmbH • Richard-Lucas-Str. 6 • 41812 Erkelenz • Germany
T. +49 (2431) 94502-0 • sales@metrus.de • www.metrus.de

Focus on safety

"Quality is a promise and proof of worth and reliability."
(SAMSON AKTIENGESELLSCHAFT)

We pledge to always deliver our products in the best quality and on time.

We can only fulfill this promise by performing constant quality assurance checks on all of our processes, starting with the incoming goods right up to when the products leave our factory. The QA requirements are divided into two equally important categories: operative quality management and strategical quality management based on the QM system according to ISO 9001:2015.



Dye penetrant test performed on a valve body



**Gebäudereinigung
Dienstleistungen** *seit 1885*

K.-H. Weidler GmbH
Freiburger Straße 5-7

D-69469 Weinheim
www.weidler.de

Fon 06201/8780 7-0
Fax 06201/8780 7-444



**AWW - Architekturbüro
W. Weickenmeier & Partner**

alle Leistungsphasen der HOAI, von der Grundlagen-
ermittlung über die Planung und Objektüberwachung
bis hin zur Objektbetreuung

Windthorststraße 11 | 67346 Speyer
Tel.: +49 (0) 6232 1006-0 | info@aww-weickenmeier.de
www.aww-weickenmeier.de



adVENIUS
Insurance Broker & Riskmanagement

Altkönigstraße 10 · 61462 Königstein
www.advenius.de · 06174 998242-0
Partner im vfm-Verbund

National and international certifications and approvals

Product approvals:

- EU type examination certificates (Module B) according to Directive 2014/68/EU (PED)
- Typetested valves (DVGW, GAR, EN 161, CERTCO, fire safe etc.)
- EAC and EACEx conformity assessment for the Eurasian Economic Union (EAEU)
- NACE standard
- ISO 15484 (TA Luft)

Staff qualifications:

- Qualifications according to the German Society for Non-Destructive Testing (DGZfP) based on DIN EN ISO 9712
- DQG quality management officer

Company certification:

- DIN EN ISO 9001:2015
- Quality assurance system according to Directive 2014/68/EU
- Manufacturer and welding operation qualifications according to AD 2000 rules



Type 72.3/MN Rotary Plug Valve tested according to DVGW and Regulation (EU) 2016/426 (GAR)



Waldemar Loeser GmbH & Co. KG



Siemensstr. 9, 67346 Speyer
Tel. 06232 87593-0
E-Mail: info@wloeser.com
www.wloeser.com

**Seit 80 Jahren Herstellung von Schleif- Entgrat, Poliermaschinen
für international kundenspezifische Oberflächenlösungen**



Cold and hot formed springs

Eibach combines highest quality with the highest level of flexibility and efficiency.

Made by Eibach
www.eibach.de



Egal wie und wohin Ihr Industriegut transportiert werden muss, wir sorgen für eine optimale Verpackung.



Exportverpackung von Industrieanlagen, Einzel-, Massen-, Schwer- und Gefahrgütern

Dokumentation, Kommissionierung und Containerstau

Einlagerung nebst Dienstleistungen auf großflächigen Hallen- und Freilagerflächen

Individuelle Entwicklung von Spezialverpackungen

Fertigung von Kisten, Schwergutkisten und Paletten jeder Bauart

Zulassung zum Reglementierten Beauftragten durch das Luftfahrtbundesamt

Bei der Konzeption der Verpackungsmethode berücksichtigen wir selbstverständlich die Art (Land, Wasser oder Luft) und die Dauer des Transportes sowie die Gegebenheiten an Verpackungs- und Bestimmungsort.

Contipack
Industrieverpackungen GmbH



Contipack
Industrieverpackungen

Böttgerstraße 20
65439 Flörsheim-Keramik

Tel.: +49 (0)6145 9561 - 0
Fax: +49 (0)6145 529 02

www.contipack.de
info@contipack.de

Logistics: processes and flow of materials within the factory

The logistics facilities covering a 1500 m² area unite the processes and flow of materials within the factory. The logistic activities include the receipt of incoming goods, warehousing and dispatch.

At the beginning of this year, construction of a new modern warehouse was completed, which offers 500 m² additional storage capacity.

More than 10,000 items are stored in the warehouse, from the tiniest screw to the final assembled valve.

To put it in a nutshell: this business unit is responsible for the on-time provision of materials for production, assembly and dispatch.



On-site transport for logistics operations

On-site transport for the logistics serves as the link between production, assembly, quality and logistics to optimize the workflow.

It enables staff in these areas to concentrate on their core competencies.

Almost every machine workstation in the production hall has an outbox marked for on-site transport by the logistics team. The quality management, assembly workshop and warehouse are also linked to the system.

Our aim is to ensure that every staff member can concentrate on their actual job and can always separate value-adding from non-value-adding activities.

- Efficient order picking for downstream work activities
- Responsibility for correct material provision (heat and series numbers)
- Monitoring and provision of storage capacity using a warehouse management system

Our supplier network



We naturally apply the same high quality standards that our customers require of us to our suppliers.

Due to the high number of valve configurations that we can produce, we require a large inventory of cast blanks and bar stock.

As a conventional engineering company with a high level of in-house manufacturing, we mainly need a variety of blanks for cast bodies as well as certain components to mount actuators onto valves.

Over many years, we have established a regional network of suppliers to allow us to respond quickly to peak demand and outsource any manufacturing processes that we cannot perform ourselves.

- Flexible factory operations with a well-established network of regional partners
- Long-term and trustful relationship with our suppliers
- Supplier audits and assessments (delivery performance, quality, price and flexibility)
- Established processes to assess new suppliers



CNC Bearbeitung
Bohren - Drehen - Fräsen
CNC Lohnarbeiten
Konstruktion



Hagen & Schlegel GmbH & Co. KG

Heiligenberger Str. 10 · 88682 Salem · Tel. +49 7553 7624
info@hagen-salem.de · www.hagen-salem.de

We are active wherever our customers need our support

Our after-sales service team is capable of providing fast customer service. For decades, we have been serving our customers who are active in a wide range of industries. We rate excellent customer support with a range of downstream services and customer satisfaction to be just as important as the high-quality products that we deliver.

We offer initial inspections and repairs of our valves performed at our headquarters in Speyer.

Our scope of services:

- Inspection and diagnosis
- Photo documentation
- Professional advice to decide whether repair or replacement is the better option
- Function and pressure tests
- Checklists, test reports and inspection certificates
- Repair reports with detailed listing of the repair work performed on a valve

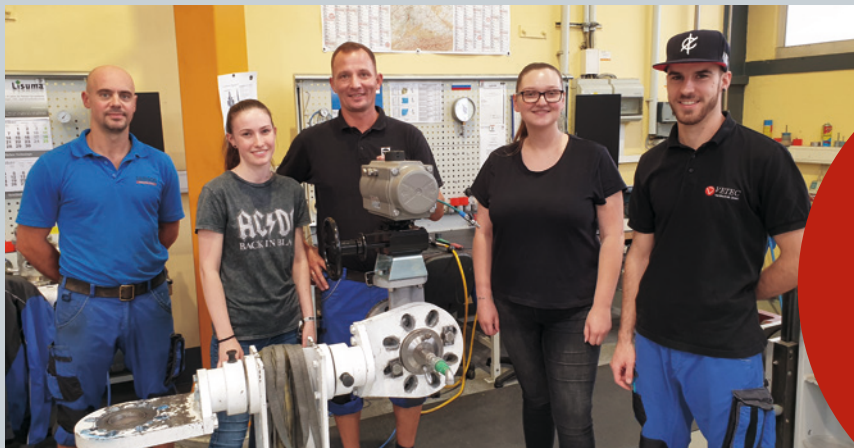


High-pressure angle valve in service for over 20 years shipped to VETEC as part of routine revision activities

Investing in the next generation

VETEC Ventiltechnik GmbH and the products it manufactures depend on the qualifications and skills of the people it employs. Today's input is directly linked to tomorrow's success.

The demand for custom-engineered specialty valves is growing. In turn, it is becoming more difficult to find trained and skilled workers for the job. To overcome this problem, in 2018, VETEC entered a cooperation with the neighboring company PFW Aerospace GmbH in Speyer to train industrial mechanics and CNC machining mechanics. Our trainees are offered the chance to take part in an exchange program organized by VETEC and SAMSON AKTIENGESellschaft. This experience helps extend their knowledge in their specialized field, lets them become familiar with the work in other departments and gives them an insight into the operations at the SAMSON headquarters.



SAMSON vocational trainees working in the VETEC assembly workshop as part of the exchange program

"VETEC provides excellent training opportunities. The work is very varied."



Trainee excursion accompanied by VETEC managers

"I enjoy working at VETEC especially because of the friendly work atmosphere between employees and supervisors."

"I was made to feel welcome where ever I worked. The atmosphere was friendly in all departments."



Verbindungen, die halten.

Zuverlässig. Flexibel. Schnell.

Egal, ob Normteile, Zeichnungsteile oder individuelle Spezialartikel. Wir kümmern uns schnell und zuverlässig um Ihr Anliegen und liefern Ihnen pünktlich das, was Sie brauchen – tagsüber oder nachts, unter der Woche oder am Wochenende.

Kaiserspezial eben.

KAISER Spezialartikel GmbH
Sonderschrauben
Zeichnungsteile



Schrauben
und Sondereile in
Werkstoffen und
Oberflächen
für besondere
Anforderungen

Zu den Ohlwiesen 7 · D – 59755 Arnsberg
Telefon: 0 29 32 – 47 58 20 · Telefax: 0 29 32 – 47 58 229
info@kaiserspezial.de · www.kaiserspezial.de

FROM STANDARD ACTUATORS TO CUSTOMISED SOLUTIONS.

ARIS Stellantriebe GmbH is your reliable partner for special and project-based solutions. Let us advise you on which drives and fittings are ideal for your requirements, and how they can be tailored to your specific project.



VETEC looks ahead

For us, the most important asset are the 120 employees working at our headquarters in Speyer and the field sales team active throughout Germany. We make sure that our staff know that we appreciate their commitment. After all, we could not accomplish anything without them. From young employees who have just completed their vocational training to long-serving employees who have worked at the company for almost 40 years, we all work together in a family atmosphere. This exceptionally pleasant work environment is noticeable during everyday business, but makes company events and celebrations particularly special. Together with our workforce, we have been an internationally recognized supplier of high-quality customized rotary plug valves for over 50 years. We plan to expand the VETEC family in the future and extend our specialist field.

In specific terms, we are striving to make the Speyer site more sustainable and achieve better energy efficiency. We are planning to modernize our machinery and advance digital transformation in our production by introducing further innovative manufacturing technology.

Naturally, we intend to continue manufacturing first-rate products with focus on quality and durability.

We want to carry on our tradition, yet also invest in the next generation. We will continue to promote the health and fitness of our workforce. Our organization will be adapted to meet future requirements. In an ever complex and fast-moving world, we want to remain flexible, apply new methods and remain committed to the success of the company. We want to open up new markets and continue our course of growth.





How to find us

VETEC Ventiltechnik GmbH
Siemensstrasse 12
67346 Speyer, Germany

Phone: +49 6232 6412-0
Fax: +49 6232 42479
E-mail: sales-vetec-de@samsongroup.com
Website: www.vetec.samsongroup.com

SMART IN FLOW CONTROL