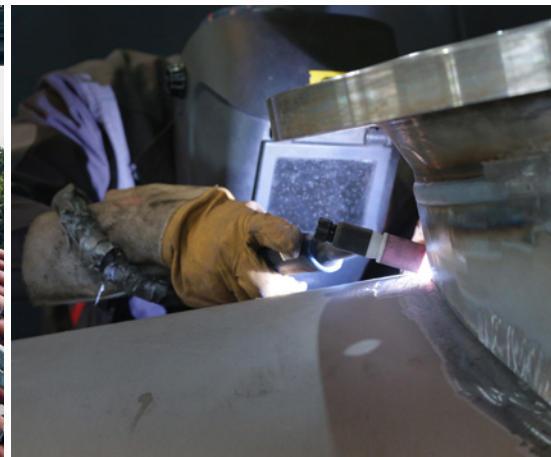


# ROHRLEITUNGSBAU WILDAU



## SMB Rohrleitungsbau Wildau

Your projects handled innovatively  
and from a single source







## SMB Rohrleitungsbau: tradition, innovation, high performance

Our company, rich in tradition and with its headquarters based in Ludwigsfelde (Brandenburg), was founded in 1949, and was one of the largest pipeline builders in the former GDR. Today, we also specialise in plant construction and can also provide a high level of expertise in the fields of engineering and consulting, sewage treatment plant technology and steel construction. In addition to our headquarters in Ludwigsfelde, our comprehensively certified company has locations in Duisburg, Oberhausen, Eisenhüttenstadt, Bottrop and Wetzlar.

With our skills bundled together under one roof, we can offer our customers in Germany and throughout Europe everything required from a single source: from the stage of well thought-out planning, to that of precise manufacturing, right up to the professional assembly and commissioning on site. Our range of services also naturally includes comprehensive project documentation, as well as professional repair work and maintenance carried out on a basis of regular maintenance intervals.

We employ approx. 80 excellently trained employees and use the latest technologies, such as TIPTiG automatic welding machines and orbital welding equipment. In addition, the creation of high-resolution 3D models, which has been one of our core competences for several years, is capable of ensuring optimal project planning.







## Our historical milestones

**currently**  
6 locations with 80 employees

**2017**  
Use of a laser scanner in planning  
and construction work

**2010**  
New construction of a modern production  
and assembly hall with an area of 1,980 m<sup>2</sup>

**2007**  
Management buy-out by  
the two managing directors

**1995**  
Relocation of the company headquarters  
from Ludwigsfelde to Wildau

**1989**  
520 employees, including 70 trainees –  
making ours one of the largest pipeline  
construction companies in the GDR

**1949**  
Founded as a sanitary and  
electrical installation company

**2020**

Introduction of TiPTiG and orbital  
welding technology obtained from the  
company OWT

**2011**

Expansion to include the sewage  
treatment plant technology (tank  
rehabilitation)

**2008**

Movement to the „new“ old location  
in Ludwigsfelde

**1996**

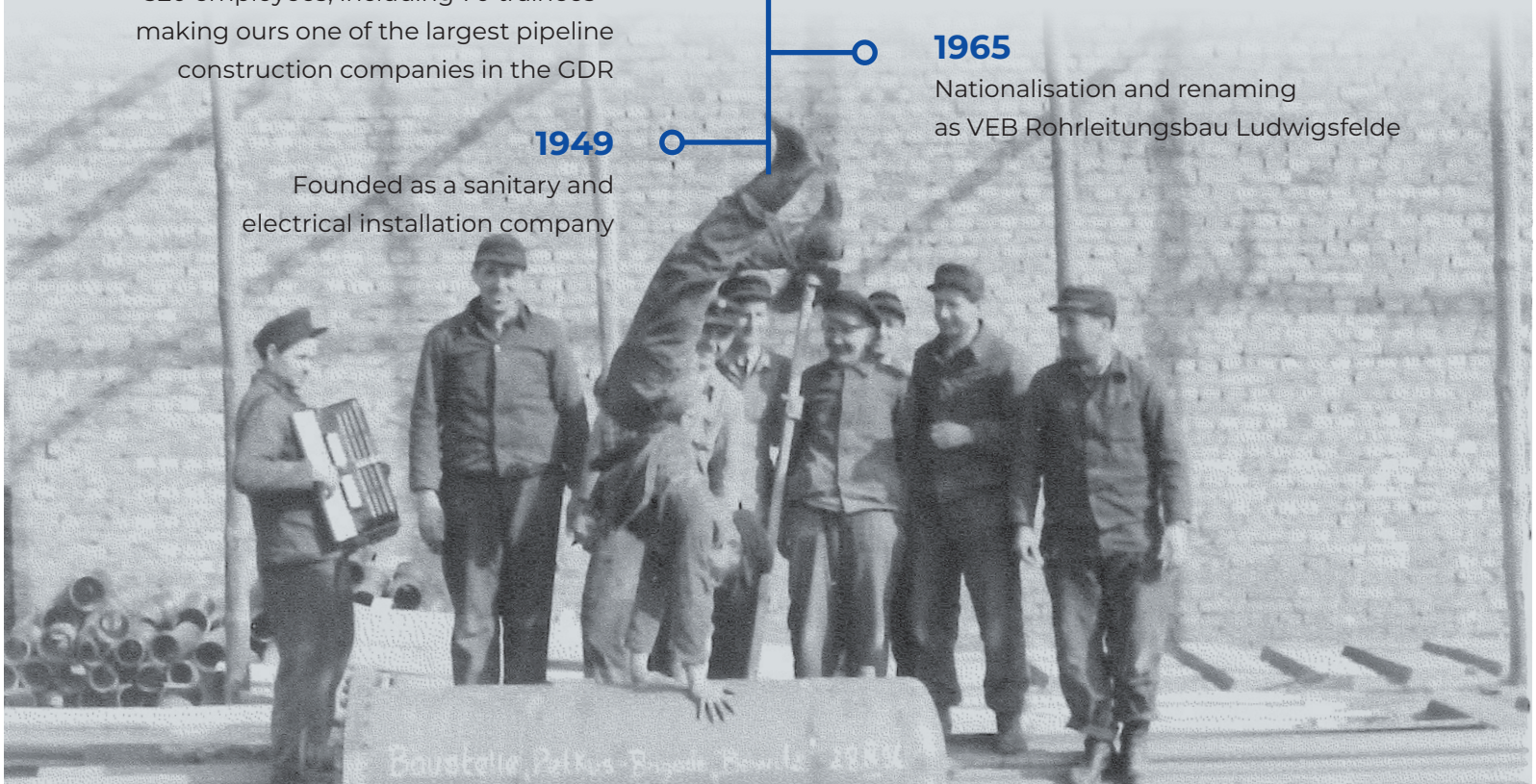
Changed company name to SMB Rohr-  
leitungsbau Wildau GmbH & Co. KG  
under the umbrella of DIM Holding

**1990**

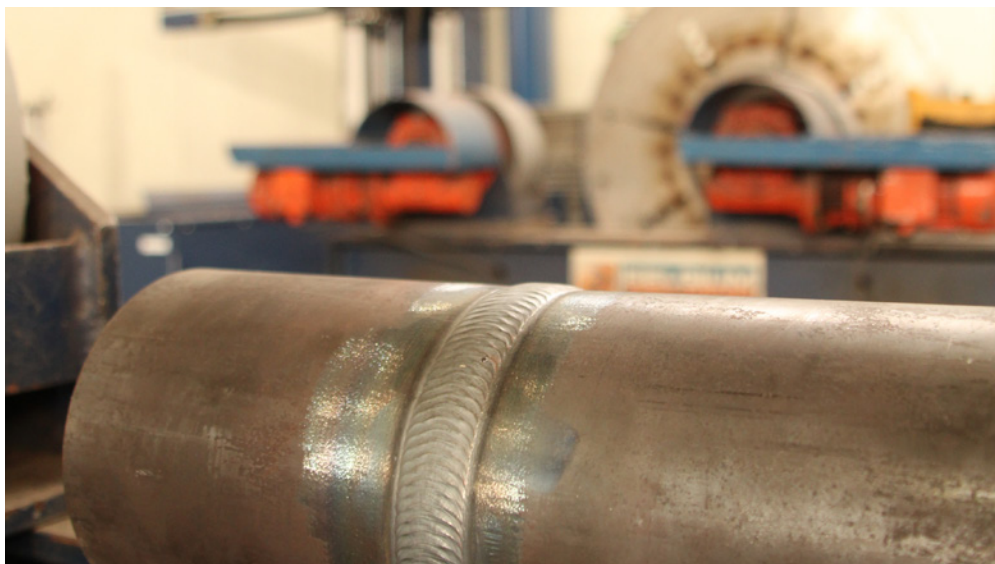
Conversion into a GmbH (limited  
liability company) within a holding  
company

**1965**

Nationalisation and renaming  
as VEB Rohrleitungsbau Ludwigsfelde







## Certified quality



Welding certificate  
EN 1090-2, EXC4



Conformity of factory  
production control



Certificate of a DVGW  
specialist company group  
G1/W1



SCC\*\*



ISO 9001:2015



System for transferring the  
marking of materials



Specialist company in  
accordance with the Water  
Resources Act



**We are comprehensively certified for all processes and have appropriated over 100 qualifying process tests in the following areas:**

#### **Welding processes:**

- 111 Manual arc welding
- 141 Tungsten inert gas welding
- 135/136 Metal active gas welding

#### **Product shapes:**

- T tube
- P plate

#### **Weld types:**

- BW Butt weld
- FW Fillet weld

#### **Filler metal groups:**

- FM1 unalloyed steels and fine grain steels
- FM2 high-strength steels

- FM3 high-temperature steels,  $\text{Cr} < 3.75 \%$
- FM4 heat-resistant steels,  $3.75 \leq \text{Cr} \leq 12 \%$
- FM5 stainless and heat-resistant steels
- FM6 nickel alloys

#### **Versatile surface finishes**

We carry out coating work according to factory standard or customer specifications with SA 2.5, as well as priming and intermediate or final coatings and:

- Hot-dip galvanising
- Stainless steel pickled and passivated

#### **Modern technology and certified expertise**

In our 1,980 m<sup>2</sup> production and assembly hall, we carry out our work using the most modern production technologies, and designate separate areas for steel and stainless steel processing. In addition, we have a high-performance machine and vehicle fleet, which includes, among other things, telescope lifts, construction site vehicles, a 35-metre high tower crane and automatic welding machines, rotary devices and starting chamfering devices.

#### **Our variety of materials**

We process all common EN/ASTM standard materials. These include:

#### **Unalloyed steels or alloyed fine grain steels:**

- S235
- L290
- P235GH
- L360
- P265GH
- J55
- P250GH
- S355
- P355NL
- A516 Gr. 60
- A516 Gr. 70

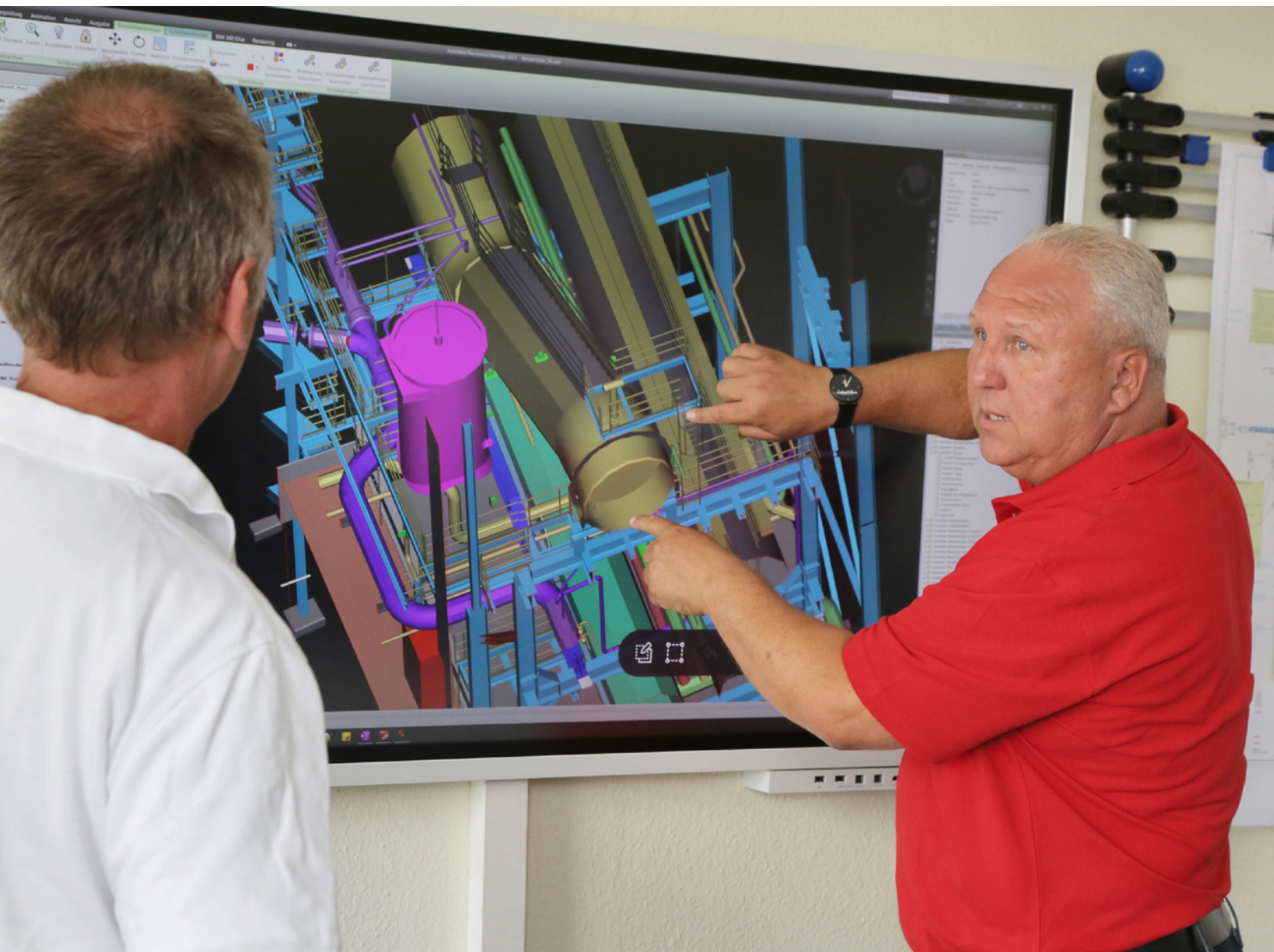
#### **Heat-resistant steels:**

- 16Mo3
- 13CrMo4-5
- 10CrMo 9-10

#### **Austenitic/corrosion-resistant steels:**

- 1.4301
- 304L
- 1.4404
- 316L
- 1.4462
- 1.4539
- 1.4541
- 1.4571
- 1.4878





## In-house planning in 3D

Since 2017, we have been creating 3D models as part of project planning efforts using our own high-resolution laser scanning technology. The scans we create on construction sites are processed in-house. This is what allows us to execute our piping and steel construction planning work, as well as deliver the necessary structural analyses and calculations from a single source. This means our customers are spared having to go through additional interfaces; in this way they won't waste unnecessary time in their projects.

Since the focus of many clients in the plant construction industry is increasingly inclined towards direct assignments, we have adjusted our know-how to let it accommodate simultaneous planning and processing of piping and steel construction. This approach allows us to eliminate potential complications and problems for new buildings in advance, as part of the planning of

existing facilities in particular. Another advantage: The high and precise degree of prefabrication optimises assembly times on the construction site. We do of course provide our clients with 3D models of the work we carry out on request.




**HILGEFORT** 

Fertigung, individuell und flexibel.

Industriestraße 2 • 49413 Dinklage

☎ +49 4443 9637-0 • ✉ [info@hilgefort.de](mailto:info@hilgefort.de)

**[www.hilgefort.de](http://www.hilgefort.de)**



Industrieschläuche - Kompensatoren - Dichtungen - Armaturen

**IBK**  
WISSMANN GMBH  
INDUSTRIE-TECHNIK

[www.ibk.de](http://www.ibk.de) [info@ibk.de](mailto:info@ibk.de)  
Tel. +49 (0) 2045/8903-0





Büskesheide 8a

46499 Hamminkeln

info@as360.de

Tel. +49 (0) 1520 / 9 25 65 15



„WIR BILDEN NICHT NUR  
ARBEITSSICHERHEIT AUS  
SONDERN LEBEN ES AUCH



FOLGENDE  
ÜBERPRÜFUNGEN:

- Leitern und Tritte
- Regalprüfungen
- Elektrogeräte

Ihr **PARTNER**

Arbeitssic



PERSÖNLICH  
PROFESSIONELL  
KOMPETENT



## UNSERE SEMINARE:

- Flurförderfahrzeuge
- Teleskopstapler
- Hubarbeitsbühne
- Kran
- Anschlagen von Lasten
- Atemschutzgeräteträger
- Brandschutz- u. Evakuierungshelfer
- PsA gegen Absturz
- Ladungssicherung
- Befähigte Person Gerüstbau
- SCC 16/ 17/ 18
- Explosionsschutz



R für

herheit





## Plant and pipeline construction

As an experienced partner in plant and pipeline construction, we take on the entire project and handle all processes in a professional manner. By monitoring the entire process chain from planning to commissioning, we guarantee the highest quality standards and on-time completion of your project.



## Workshop delivery

Technically flawless  
production guaranteed

## Quality assurance

The independent quality assurance department drafts the proper documentation. Inspection is carried out during construction.



Click here to watch our video and learn more about our work.

## Controlling

Our company organisation, along with the systematic recording of the assembly work and the construction process, guarantee cost-effective completion of the work marked by strict compliance with quality and deadlines.

## Assembly

Qualified and experienced specialists carry out their assembly work in a reliable and quality-conscious manner and on schedule.







# Gerüstbau seit 1904 **stromberg**®

System- und Modulgerüste · Höhenzugangstechnik · Sonderkonstruktionen

Stromberg Gerüstbau GmbH & Co.KG | Fon 0203 79966-00 | Fax 0203 79966-01  
Obere Kaiserswerther Straße 58 | 47249 Duisburg | [www.stromberg-geruestbau.de](http://www.stromberg-geruestbau.de)





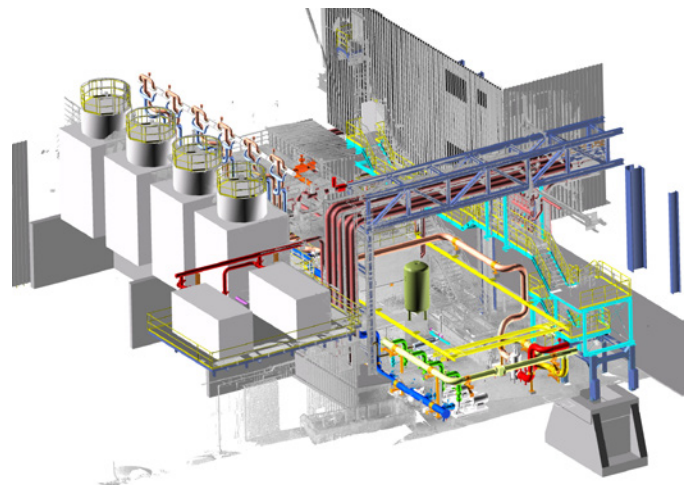


## Engineering and consulting

In this business segment, we score with the use of precise inventories, which we create using modern LaserScan technology. The following documents, among others, can be created from the 3D models generated and supplemented in the course of planning:

- Layout plans (plant layout)
- Pipe plans
- Workshop figures for:
  - Piping isometrics
  - Pipe supports
  - Steel and apparatus engineering
  - Bill of materials

Our detailed 3D planning also includes ROHR2 calculations, internal pressure calculations and steel construction statics, and the corresponding as-built and quality documentation.



# weißer

*Ingenieurbüro für Statik und Konstruktion*  
Vorwerksgasse 12 | 07407 Rudolstadt

T +49 [0] 3672 / 489745 | M +49 [0] 171 / 5707281  
office@ib-weisser.de  
www.ib-weisser.de



## In-house production

In the field of steel construction, other companies are often dependent on subcontractors - SMB, on the other hand, provides you with everything. For example, we manufacture stair towers, platforms, pipe bridges and much more as part of plant and pipeline construction projects and for inclusion in sewage treatment plant technology fare. We possess EN 1090-2 to EXC4 and ISO 3834-2 welding certificates and use modern TiPTiG and orbital welding technology, as well as a MAG automatic machine, in the delivery of efficient and precise work.







## Expertise in sewage treatment plant technology

We have many years of experience in the field of sewage treatment plant technology and are the professional partner of choice when it comes to the inspection and rehabilitation of dry gas tanks with all adjoining piping systems. In compliance with DVGW [German Technical and Scientific Association for Gas and Water] and DWA [German Association for Water, Waste Water and Waste] guidelines, our highly qualified specialists carry out all repairs, maintenance and new installations. The „extra“ factor with our service: While we are working on your dry gas tank, we will provide you with an interim tank.

- Inspections according to DWA M-376
- Membrane replacement
- Coatings
- Maintenance of deflagration arresters
- Repair of telescopic ceiling, tank bottom and shell
- Pipeline construction
- Steel construction
- Engineering







**ROHRLEITUNGSBAU**  
WILDAU

#### Head Office Ludwigsfelde

Struweg 40  
14974 Ludwigsfelde  
Telephon: (+49) 03378 5400 431  
E-Mail: info@smb-rbw.de

#### Support Centre Duisburg

(thyssenkrupp Steel Europe AG)  
Franz-Lenze-Straße Tor 3  
47166 Duisburg

#### Sales Office

##### North Rhine-Westphalia

Essener Straße 99 d  
46047 Oberhausen

#### Support Centre

##### Eisenhüttenstadt

(ArcelorMittal)  
Werkstraße 20 a  
15890 Eisenhüttenstadt

#### Support Centre Bottrop

(Emscher Genossenschaft)  
In der Wellheimer Mark 190  
46238 Bottrop

#### Support Centre Wetzlar

(Buderus Edelstahl GmbH)  
Buderusstraße 25  
35576 Wetzlar



JS/DEUTSCHLAND • Concept: JS/MEDIATOOLS A/S • 118455 • www.jsdeutschland.de



# PIPES, FLANGES & FITTINGS.

## ARCUS, WELTWEIT DYNAMISCH IN EDELSTAHL

- Vollständiges Lager in EN & ASTM/ASME
- Schnelle Lieferung
- Know-how und Erfahrung
- Alle Größen, alle Qualitäten
- Engagiertes Team

**Hauptsitz:** Arcus Edelstahl GmbH, Metternicher Str. 5-9,  
53919 Weilerswist, Tel.: 02254-6060, E-Mail: sales@arcus-edelstahl.de

**Niederlassung Essen:** Arcus Edelstahl GmbH, Katernberger Str. 150,  
45327 Essen-Katernberg, Tel.: 0201-18506641, E-Mail: essen@arcus-edelstahl.de

**Niederlassung Leipzig:** Arcus Edelstahl GmbH, Hinrichsenstr. 35,  
04105 Leipzig, Tel.: 0341-23469270, E-Mail: leipzig@arcus-edelstahl.de

**Niederlassung Nord:** Arcus Edelstahl GmbH, Metternicher Str. 5-9,  
53919 Weilerswist, Tel.: 0152-07524819, E-Mail: Nord@arcus-edelstahl.de

[WWW.ARCUSEUROPE.COM](http://WWW.ARCUSEUROPE.COM)



**DYNAMIC IN STAINLESS**