

**THE SOLUTION MAKERS** ●





## Intelligent solutions for every industry

Grimm Zuführtechnik GmbH & Co KG in Spaichingen has been your solution provider for tailor-made feeding and automation concepts for 30 years. We develop intelligently configured systems that can be seamlessly integrated into production processes in a wide range of applications and industries. Our goal in every project is to maximize the success of our customers through powerful and extremely precise solutions.

A high degree of standardization of our products – combined with a very high level of vertical integration with our own construction of drive units – guarantees the high quality of all components and makes us extremely flexible.

With our headquarters in Spaichingen, Baden-Württemberg and an international network of reliable partners, we are reliably available to our customers worldwide.



### **The GoZee-App makes the brochure come alive**

Explore the brochure with the GoZee app on your smartphone or tablet and find 360° panoramas, photo galleries, cinemagraphs, direct web access and snap videos via augmented reality.

#### **GoZee: Get started in 30 seconds**

1. Go to App Store or Google Play, enter "GoZee" in the search field and download the app to your smartphone or tablet.
2. Open the app and use it on pages with the GoZee icon.



Photo gallery



Cinemagraph



WWW

Web icon



Snap video





## *Our company history*

- |      |   |      |   |
|------|---|------|---|
| 1989 | Founding of Grimm Zuführtechnik by Leopold Grimm                  | 2002 | Introduction of the 3D CAD system <i>Solid Edge</i>   |
| 1996 | Move to a new and larger company building at the Spaichingen site | 2008 | Start of production in the new company building on Robert-Bosch-Straße in Spaichingen with expansion of the production area from 1,600 m <sup>2</sup> to 3,500 m <sup>2</sup> |
| 1997 | Extension of the company building                                 | 2018 | Further product development in the milled pots segment  |
| 1998 | Conversion into a GmbH & Co KG                                    | 2019 | Expansion of production area from 3,500 m <sup>2</sup> to 5,000 m <sup>2</sup>  |
| 2001 | Introduction of a central production planning and control system  |      |   |







## From engineering to finished product

We work closely with our customers from the beginning of the project to develop individual solutions that meet all requirements. Our focus is on the fast, correct and careful provision, relay and transfer of the respective workpieces. Our goal is always a first-class supply system that is optimally connected to the entire production. In addition to all aspects relevant to production technology, our systems also provide favourable development and manufacturing costs.

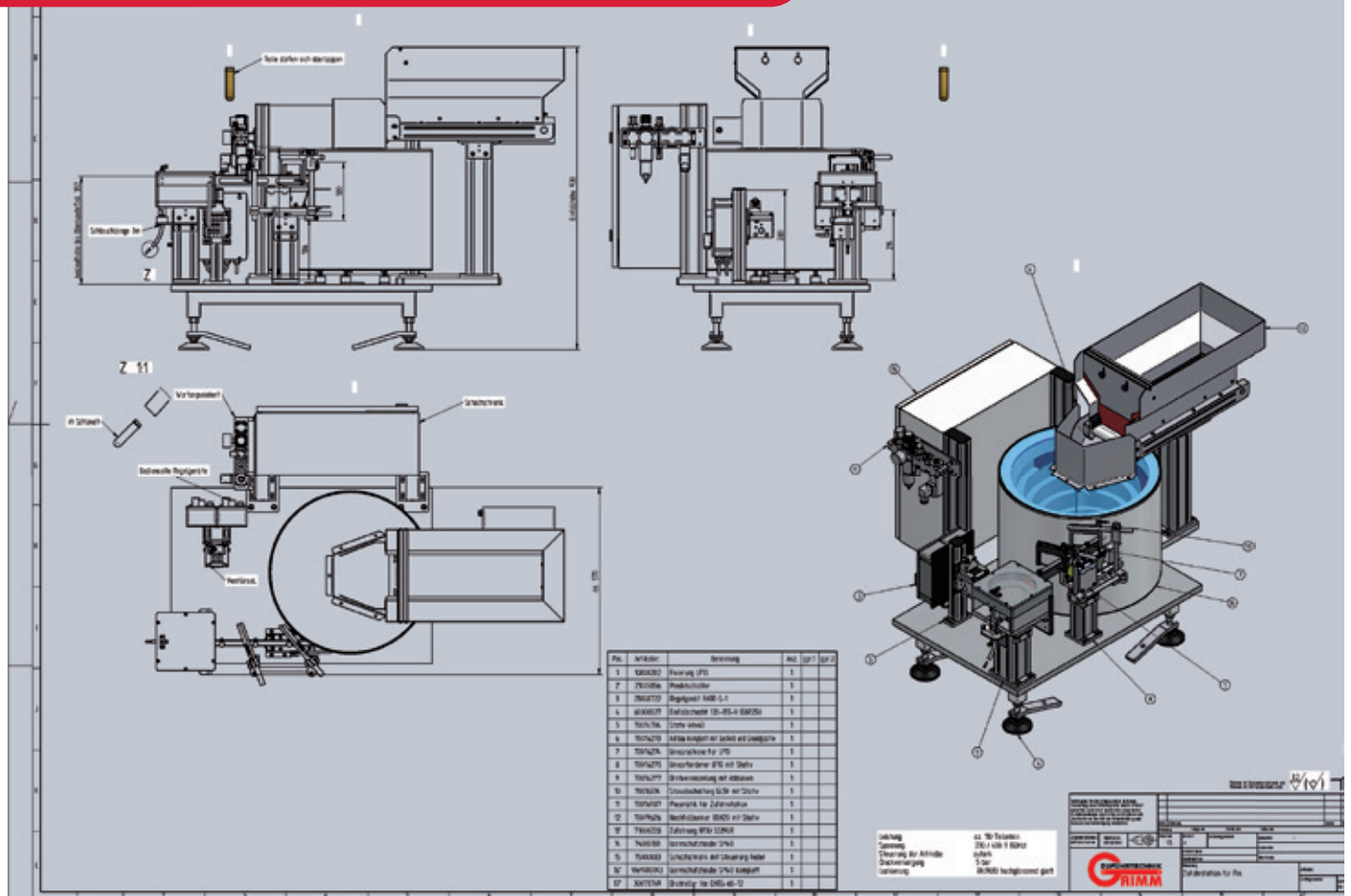
No matter which of our product packages interests you – whether simple standard components, complete system solutions or complex production linking concepts: In any case, we create the solution that optimally supports your processes, and we stand at your side after commissioning with fast and competent service.











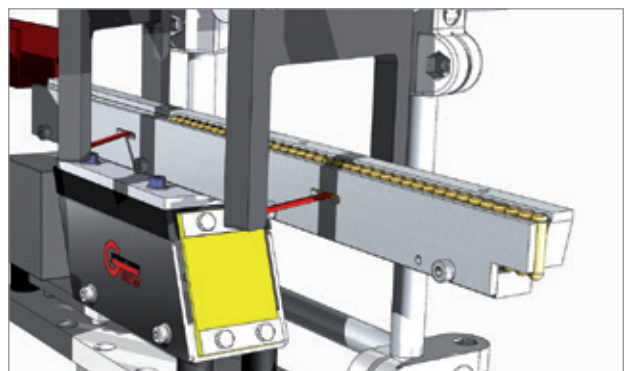
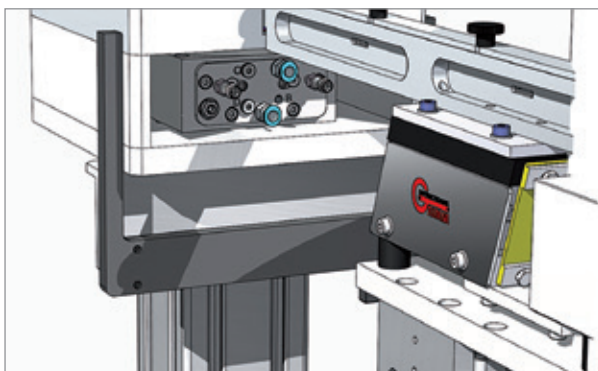
## Task

The most important factors of the task were:

The pins are to be filled as bulk material. At least 19,800 parts must be kept in stock. The parts are to be exactly positioned and prepared for further processing via a blow hose in a cycle of 0.6 seconds. The feeding station should run as a complete machine via its own control system.

### Key data

<i>Fed part</i>	Ø pins: 5.7 x 20.05 mm
<i>Conveying capacity</i>	110 parts per minute
<i>Autarchy</i>	3 hours = 19,800 parts



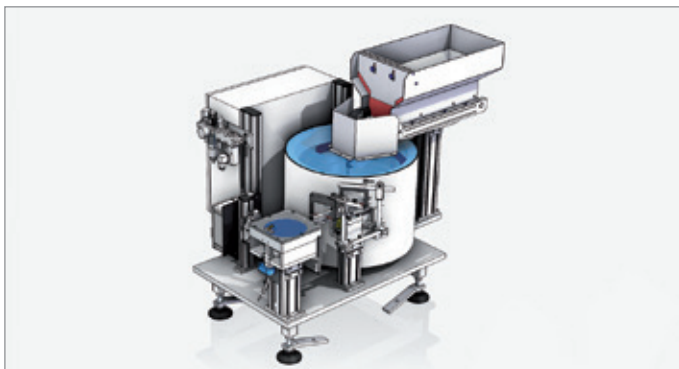




## Solution

A belt hopper, which can be filled with at least 20,000 parts, serves the downstream vibrating spiral bowl conveyor. In the bunker, the parts are sorted in the correct position and transferred to the accumulating conveyor. The accumulating conveyor stores about 50 parts. The accumulating conveyor is equipped with sensors for maximum and minimum level monitoring.

At the end of the accumulating conveyor, the parts enter a 12-part nest via the accumulation pressure, which is always indexed one nest further in the required time via a rotary indexing table. At a certain position, the parts fall into a chute where they are accelerated by compressed air into the hose.





## Power and precision

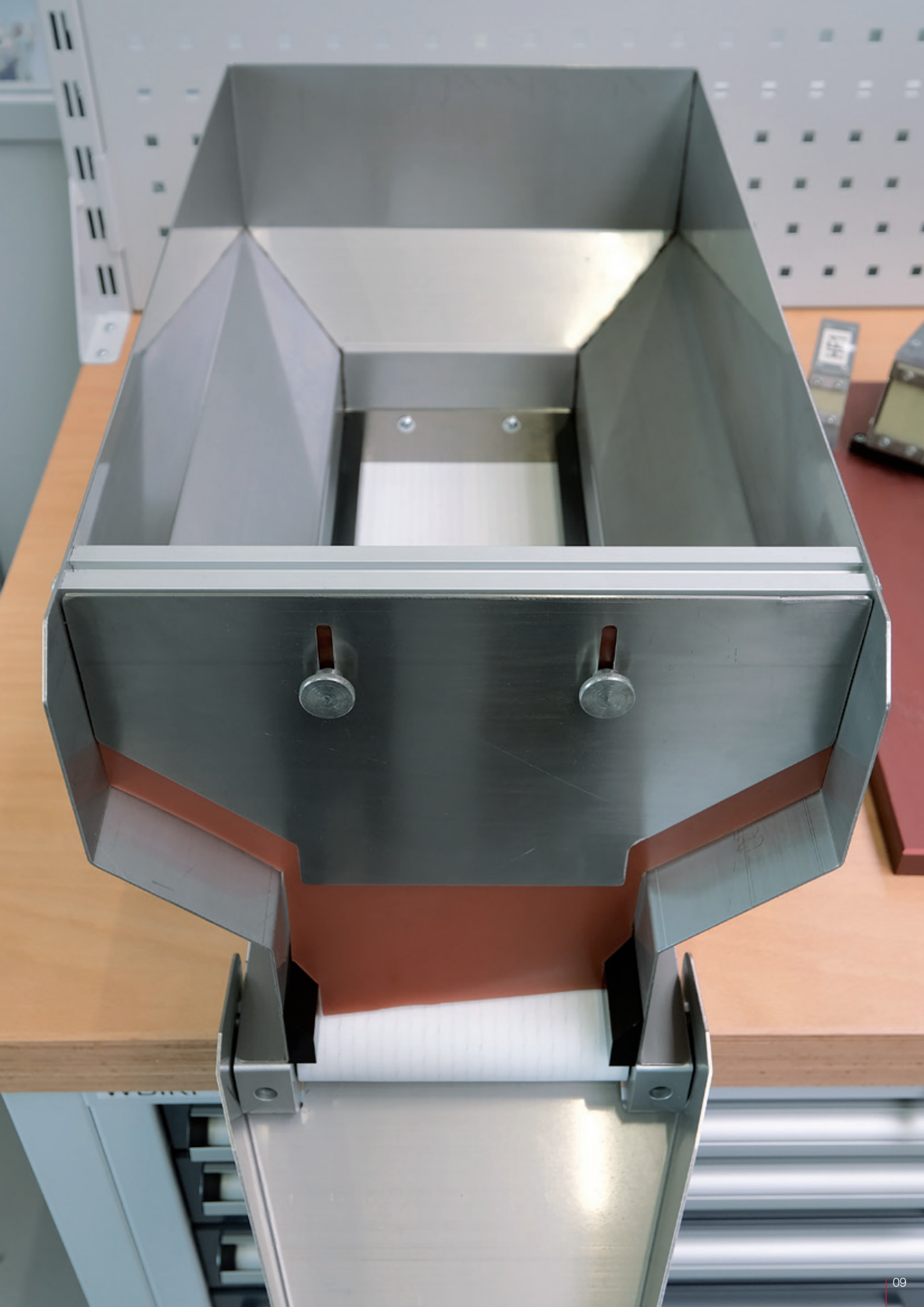
Standardization of the system components with a high degree of prefabrication helps to shorten construction times. The design can concentrate on essential project-specific challenges. Further advantages are a fast assembly by means of standard handles and a cost reduction from the use of many identical parts and a reduced administration effort by our ERP/PLM system. New manufacturing processes can also be used more quickly and efficiently.

### Further standardization advantages

- Lower transaction costs with better availability
- Avoidance of weaknesses in the process chain with a high degree of security with regard to quality and process flow
- Promotion of synergetic partnerships









## Innovative power ahead

### Advantages of milling over bending and welding

- high dimensional accuracy
- perfect repeatability
- free material selection
- short production time
- conservation of employee resources

### Advantages of 3-D printing over milling

- minimal production time
- low manufacturing costs
- risk reduction
- high customization possibilities
- freedom in design
- forward-looking sustainability

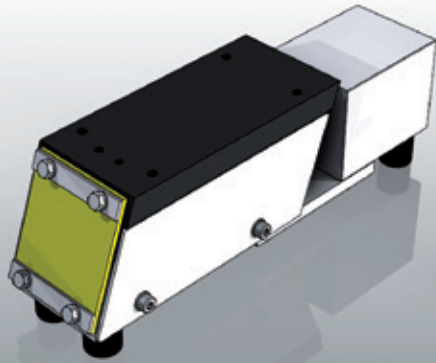






## Linear conveyors

Linear conveyors are the interfaces between parts conveyors and downstream supply units. They are available with rail lengths between 80 and 2,000 mm and are available as type HF, LF and LFL.



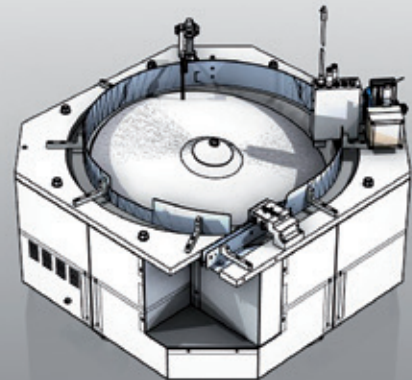
## Spiral bowl feeders

They form the core of many feeding systems and are available in diameters from 70 to 1,200 mm. Spiral bowl feeders are adapted to the specific requirements and designed in accordance with the quantities and workpieces. Our portfolio also includes milled pots.



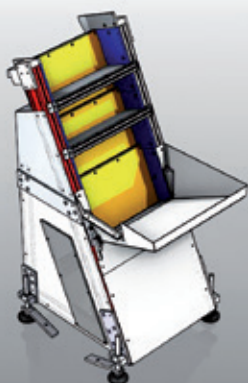
## Centrifugal feeders

With centrifugal feeders from Grimm, the high-speed feeding of mass parts is child's play. They have a conveying capacity of more than 1,000 parts per minute.



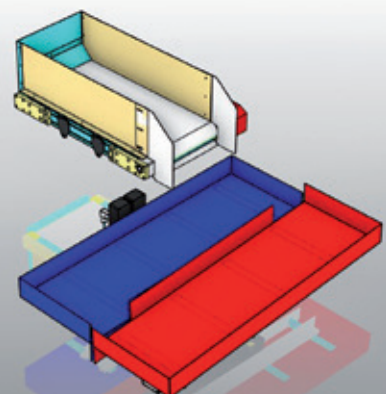
## Step feeders

Where little space is available, step feeders are the optimal solution due to their compact design. They guarantee low noise and gentle conveying of your workpieces.



## Surface conveyors

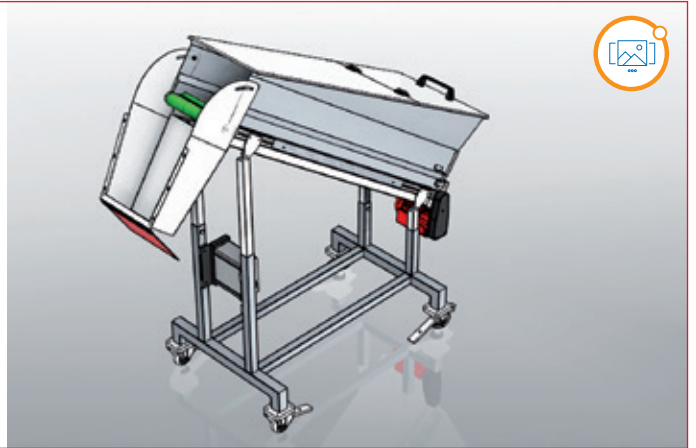
Due to their flexible use, Grimm surface conveyors are perfectly suited for robot-supported systems. In combination with position detection by camera systems, several types of parts can be fed with almost no set-up effort.





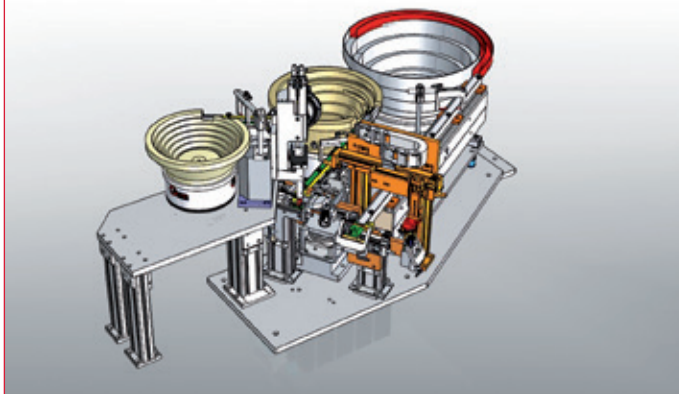
## Hopper systems

Modern hopper systems enable a generously dimensioned parts supply and the metered feeding of extremely varied sorting and feeding devices. Whether belt hoppers, vibrating hoppers or inclined conveyors – we always have the right hopper system for your application.



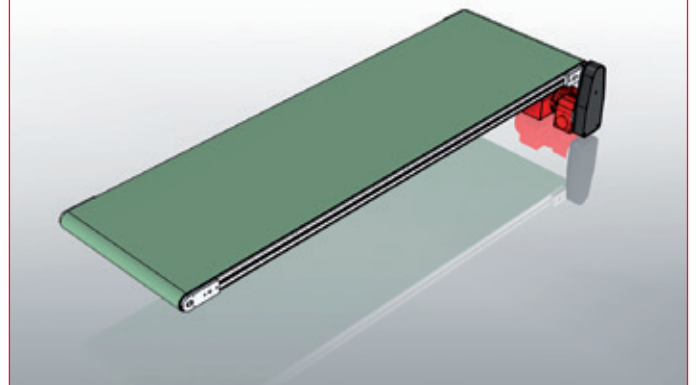
## System solutions

Customized system solutions from Grimm allow the feeding of different parts in flexibly adaptable cycle frequencies. We use all our experience and technical know-how to optimize your production.



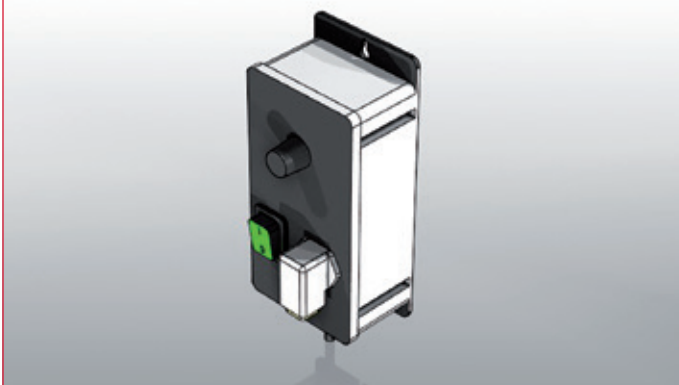
## Conveyor belts

When it comes to intermediate, infeed or outfeed transport in the assembly process as well as the interlinking of feed components, workstations and machines, our conveyor belts get the job done.



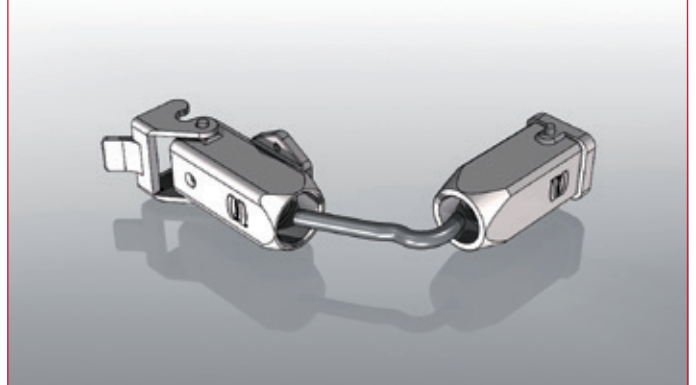
## Control units

Our control units ensure the optimum coordination and regulation of the most varied feeding components.



## Accessories

Whether fork light barriers, pendulum switches, noise protection components, tripods, floor stands or coatings – we have the right accessories for every need, and always perfectly integratable.





## We are there for you worldwide

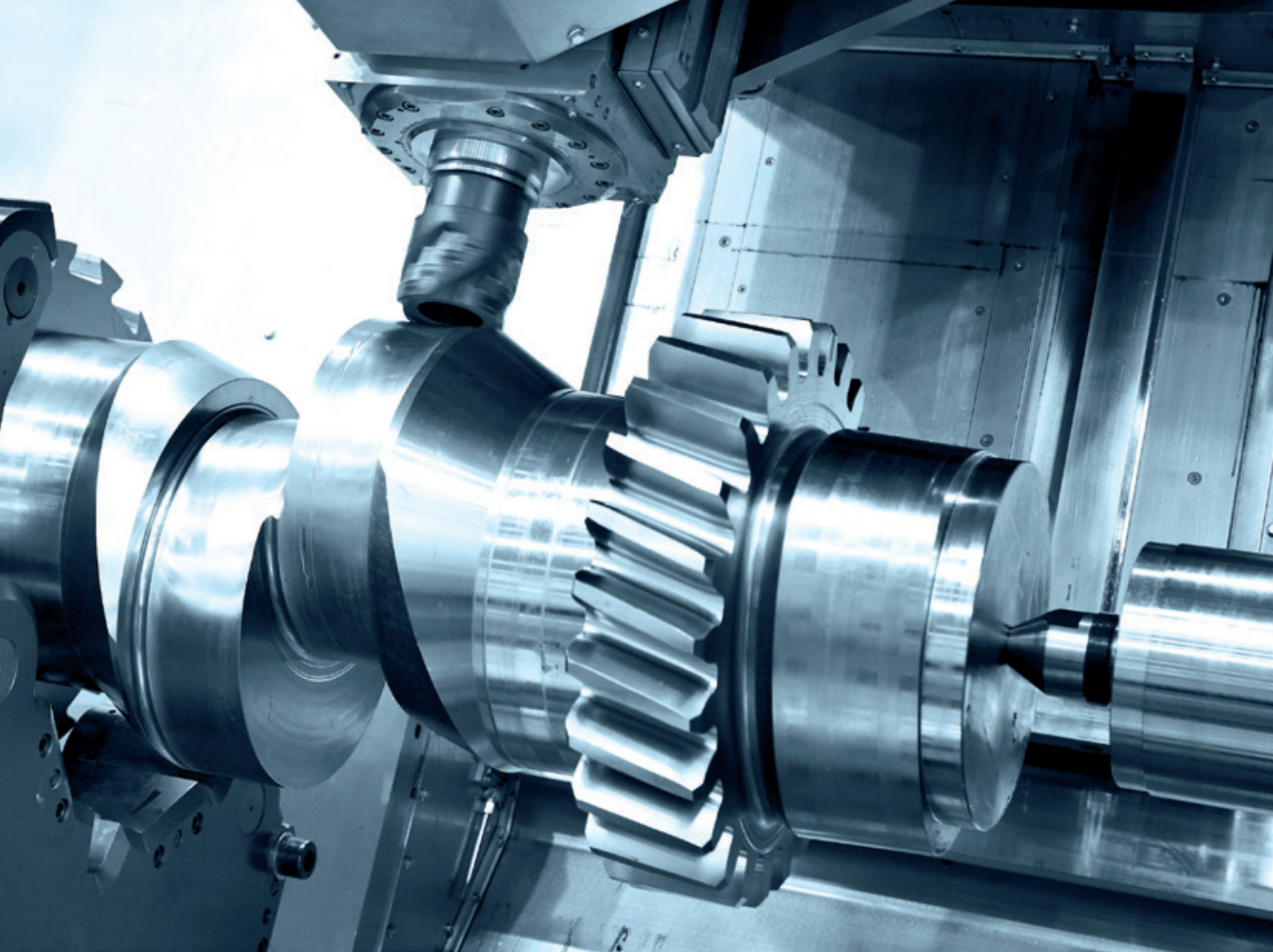
Grimm Zuführtechnik GmbH & Co KG is not only there for you at the company headquarters in Spaichingen, but also supports you with a worldwide network of reliable representatives and trading partners wherever you need us.



### Thank you very much!

We would like to take this opportunity to thank our partners. They have been supporting our company's success for many years with excellent services and high-quality products.





# EDGE CAM

## IHR AUTOMATISIERTES CAM-SYSTEM FÜR DIE FERTIGUNG

EDGE CAM, unsere marktführende Software im Bereich der Solid-Bearbeitung, bietet eine breite Palette produktionssteigernder Leistungsmerkmale und Funktionen. Volumenmodelle können dabei aus allen gängigen CAD-Systemen in EDGE CAM geladen werden.

Dank der außergewöhnlichen Benutzerfreundlichkeit und den geringen Zykluszeiten spielt EDGE CAM gerade auf multifunktionalen Dreh-/Fräs-Maschinen seine volle Stärke aus. Eine vollständige Kollisionsüberwachung/Simulation garantiert gerade bei komplexen Bearbeitungen höchste Sicherheit Ihrer Fertigungsprozesse.



# ESINZ

## METALL & LASER GMBH

Heinrich-Honer-Straße 7 · 78573 Wurmlingen · Tel. 07461 3247 · sinzmetall@t-online.de · www.sinz-metallbau-lasertechnik.com

Promotion · Dienstleistung, Handel und Handwerk

### Sindele Schweißtechnik -Liefer-und Serviceprogramme, Werkzeuge



„Sindele Werkzeuge Schweißtechnik“ steht seit 1965 für sämtliche Produkte und Verfahren rund ums Schweißen sowie Drucklufttechnik, Technische Gase und Metallverarbeitungswerkzeuge. Als Zulieferer- und Serviceunternehmen für Industrie und Handwerk versorgt der Familienbetrieb in zweiter Generation mit zwei Mitarbeitern den regionalen Raum vom Schwarzwald bis zum Donautal mit eigenen Fahrzeugen. Ein Ersatzteileservice, Arbeitsschutzartikel und die Durchführung von Reparaturen aller Fabrikate vervollständigen das umfangreiche Leistungsspektrum.



Sindele Schweißtechnik · Hauptstraße 196 · 78549 Spaichingen  
Telefon 07424/95 78-0 · www.sindele.de



## AUTOGALERIE

SCHWARZWALD-BAAR

Autogalerie Schwarzwald-Baar GmbH & Co.KG · Neuer Markt 2 · 78052 Villingen-Schwenningen · Tel. 07721 994050  
Fax 07721 9940515 · AutogalerieSchwarzwaldBaar@mobile.de · www.autogalerie-vs.de



Driven by Passion  
for **best Performance.**

**Messestände  
Eventmanagement**

**Light & Sound** 

Der Weg durch die bunte Welt  
von Messen und Veranstaltungen **ist orange.**

Light & Sound ON TOUR  
Otto Hahn Straße 10, 78549 Spaichingen  
Tel.: +497424 / 946461, Fax: 946463  
info@le-event.de, [www.ls-event.de](http://www.ls-event.de)

**konzeption. planung. überwachung.**

**Bernd Mattern**  
Freier Architekt Dipl.-Ing.(FH)

Goethestraße 57  
78669 Wellendingen  
T +49 7426 912010

[www.BerndMattern.de](http://www.BerndMattern.de)

**BMATT  
architektur**

**DISTEL**

Konstruktion | CNC-Frästechnik

Wir gratulieren zum 30-jährigen Jubiläum und bedanken uns  
für die jahrelange angenehme Zusammenarbeit!

Distel Konstruktion GmbH & Co.KG  
Hauptstrasse 10  
D-78606 Seitingen-Oberflacht  
Tel. 07464 / 96020  
info@distel-konstruktion.de

[www.distel-konstruktion.de](http://www.distel-konstruktion.de)

**SMS**

Von Digitalisierung in der  
Fertigung kann man reden.

**Oder  
sie machen!**

SAP Business One. Mit SMS.

Für Metallverarbeitung  
und Maschinenbau.

... warum sich mit weniger als der besten Lösung zufrieden geben?

Ihr Partner für  
**SAP Business One**

SMS Business Software Solution GmbH | Carl-Zeiss-Straße 27-29 | 73230 Kirchheim unter Teck  
phone +49 7021 92804 00 | [www.smserp.de](http://www.smserp.de) | [kunde.ist.koenig@sms-pps.de](mailto:kunde.ist.koenig@sms-pps.de)

WIR SIND

AUSGEZEICHNET

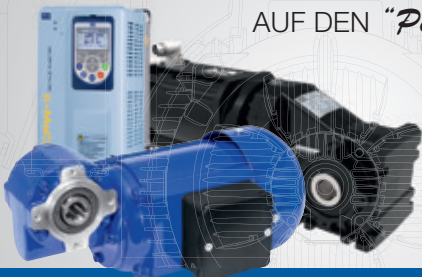


**maiergroup**  
versicherungsmakler

maiergroup versicherungsmakler GmbH  
Bahnhofstraße 124  
78532 Tuttlingen  
Telefon: 0 74 61/94 80-0  
Telefax: 0 74 61/94 80-800  
info@maiergroup.com  
www.maiergroup.com

## ANTRIEBSLÖSUNGEN

AUF DEN "Punkt" GEBRACHT



Württ. Elektromotoren GmbH  
72336 Balingen

info@weg-antriebe.de · www.weg-antriebe.de

Härterei  
**MÜLLER+HAYER**

Was wir für Sie machen ... ist die Härte !!!

Hohenkrähenstraße 4 · 78054 VS-Schwenningen  
Tel. 07720 31472 · info@mueller-hayer.de  
www.mueller-hayer.de

**zindt**

MODELL- UND FORMENBAU GMBH

**Zindt Ihr Einzelteillfertiger von klein bis groß.**

Wir unterstützen Sie vom Entwurf über Konstruktion, Prototypen und Modellbau bis zum fertigen Produkt. Sie benötigen ein Werkzeug für Partikelschaum in EPS und EPP oder Maschinenbaukomponenten, dann sind wir Ihr Partner.

**Formenbau » Lohnfertigung**



Zindt Modell und Formenbau GmbH  
Bahn 4 · 78073 Oberbaldingen · Tel. +49 (0)7706 92267-0  
info@zindt-mfb.de · www.zindt-mfb.de





## DER ROBOTER-AUTOMATISIERER AUS DER REGION



**EGS**  
AUTOMATISIERUNGSTECHNIK GMBH



**EGS Automatisierungstechnik GmbH**

Raiffeisenstraße 2 78166 Donaueschingen  
fon: +49 (0) 771 898606-0 fax: +49(0) 771 898606-99  
info@egsgmbh.de www.egsgmbh.de



Wir sind dabei, auch wenn man uns nicht sieht ...

Unsere Test- und Prüfsysteme sichern die Qualität von:

- » E-Bikes
- » Garagen- und Industrietore
- » Scheibenwischermotoren
- » Windkraftanlagen
- » KFZ-Lenkungen
- » und vieles mehr ...

Max-Planck-Str. 5/1 · 78549 Spaichingen  
Tel. 07424 95900 · gms@gms-messtechnik.de  
[www.gms-messtechnik.de](http://www.gms-messtechnik.de)

# Banking, wann, wo, wie Sie wollen.

Über 80 digitale Services und unsere persönliche Beratung in Ihrer Filiale vor Ort.

Jeder Mensch hat etwas, das ihn antreibt.

Wir begeistern - seit 1862.

**Wann, wo, wie Sie wollen:**

Wir sind auch online für Sie da. Erfahren Sie mehr über unsere digitalen Services in einer unserer Filialen oder auf [www.vobakn.de/80](http://www.vobakn.de/80) und [www.vobakn.de/24](http://www.vobakn.de/24).



Alle 80 Services  
auf einen Blick:  
[vobakn.de/80](http://vobakn.de/80)



**Volksbank  
Konstanz**



## Grimm Zuführtechnik GmbH & Co. KG

Robert-Bosch-Straße 3  
78549 Spaichingen  
DEUTSCHLAND

T + 49 7424 9580-0

F + 49 7424 9580-19

info@grimm-automatisierung.de

www.grimm-automatisierung.de



You too can become a solution provider in an innovative company with very high future prospects.

We would be very pleased to receive an unsolicited application or a direct contact via our Quickpage [www.die-lösungsmacher.de](http://www.die-lösungsmacher.de).

